

HI-TACAN RWY 14

VORTAC LMT 115.9 Chan 106	APCH CRS 134°	Rwy Idg 10,302 TDZE 4091 Arprt Elev 4095
---	-------------------------	---

JAL-473 [USAF]

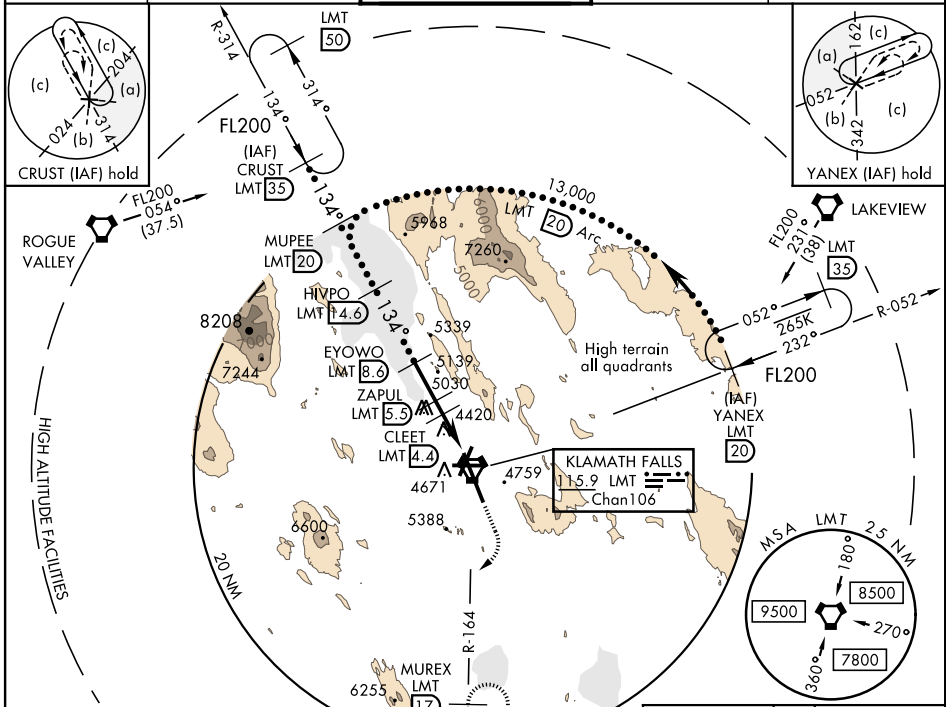
CRATER LAKE-KLAMATH RGNL (KLMT)

▼ * When ALS inop increase all CATS vis to 2½
** Circling NA for CATS D and E east of Rwy 14-32

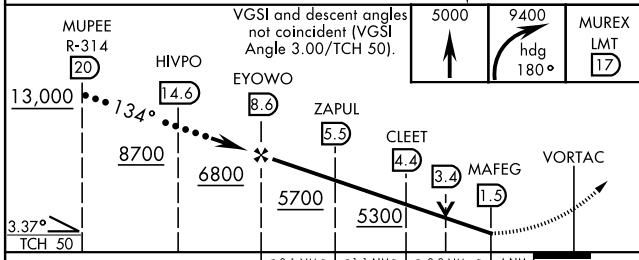


MISSED APPROACH: Climb to 5000 then climbing right turn to 9400 on heading 180° and LMT VORTAC R-164 to MUREX/LMT 17 DME and hold. Continue climb-in-hold to 9400.

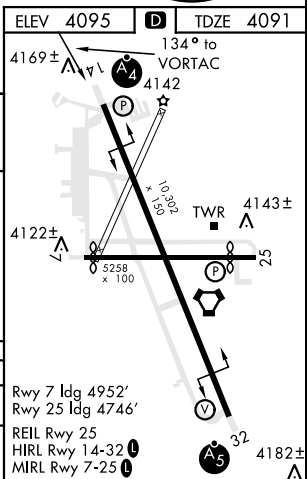
ATIS 126.5 263.0	KINGSLEY APP CON 123.675 270.8	KINGSLEY TOWER ★ 133.975 (CTAF) 257.8	GND CON 121.9 348.6	UNICOM 122.95
----------------------------	--	---	-------------------------------	-------------------------



NOT FOR CIVIL USE
EMERG SAFE ALT 100 NM 16,400



CATEGORY	C		D		E
S-14*	4860-2 769 (800-2)				
☐ CIRCLING**	5420-3 1325 (1400-3)		5660-3 1565 (1600-3)		5700-3 1605 (1700-3)



HI-TACAN RWY 14

NW-1, 25 FEB 2021 to 25 MAR 2021

NW-1, 25 FEB 2021 to 25 MAR 2021