

HI-ILS or LOC RWY 18

LOC I-OCZ 111.1	APCH CRS 177°	Rwy ldg 12,901 TDZE 1195 Arpt Elev 1219	JAL-232 [USAF]	LINCOLN (KLNK)
---------------------------	-------------------------	--	----------------	----------------

DME, RADAR required.

▼ * When ALS inop, increase RVR to 40, vis to ¾ mile.
** When ALS inop, increase vis to 1¾ miles.

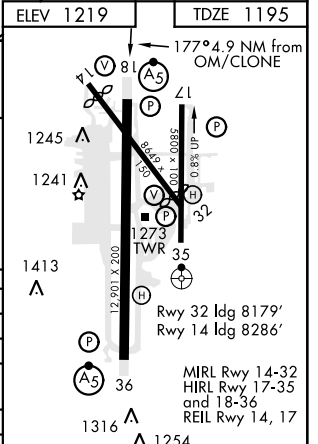
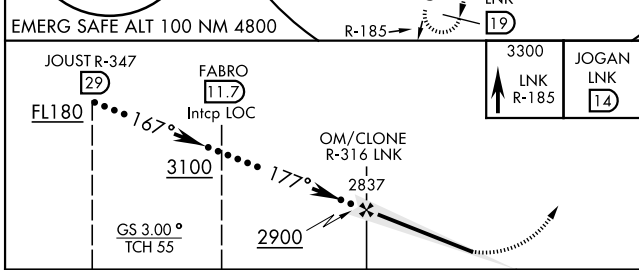
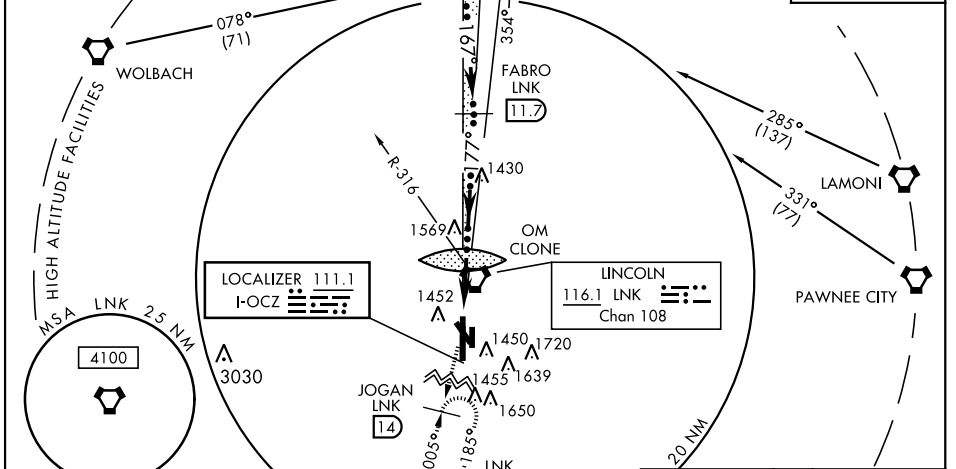
MALSR (A5)

MISSED APPROACH: Climb to 3300 on LNK VORTAC R-185 to JOGAN (LNK 14 DME) and hold.

ATIS 118.05 290.9	OMAHA APP CON 124.0 270.3	TOWER* 118.5 253.5	GND CON 121.9 275.8	CLNC DEL 120.7 225.4
-----------------------------	-------------------------------------	------------------------------	-------------------------------	--------------------------------

*** When ALS inop, increase RVR to 45, vis to ¾ mile.
† When ALS inop, increase vis to 2 miles.

When local altimeter setting not received use Beatrice altimeter.



CATEGORY	C	D	E
S-ILS 18 *	1395/24	200	(200-½)
S-LOC 18 **	1820-1¾	625	(700-1¾)
CIRCLING	1820-1¾ 601 (700-1¾)	1820-2 601 (700-2)	2040-3 821 (900-3)
	BEATRICE ALTIMETER SETTING		
S-ILS 18 ***	1486/24	291	(200-½)
S-LOC 18 †	1920-1¾	725	(800-1¾)
CIRCLING	1920-2 701 (800-2)	1920-2¼ 701 (800-2¼)	2140-3¼ 921 (1000-3¼)

FAF to MAP 4.9 NM					
Knots	120	140	160	180	200
Min:Sec	2:27	2:06	1:50	1:38	1:28

HI-ILS or LOC RWY 18

NC-2, 25 FEB 2021 to 25 MAR 2021

NC-2, 25 FEB 2021 to 25 MAR 2021