

# HI-ILS or LOC/DME RWY 36

LOC I-LNK <b>109.9</b>	APCH CRS <b>357°</b>	Rwy ldg <b>12,901</b> TDZE <b>1175</b> Arprt Elev <b>1219</b>	AL-232 [USAF]	LINCOLN (KLNK)
---------------------------	-------------------------	---	---------------	----------------

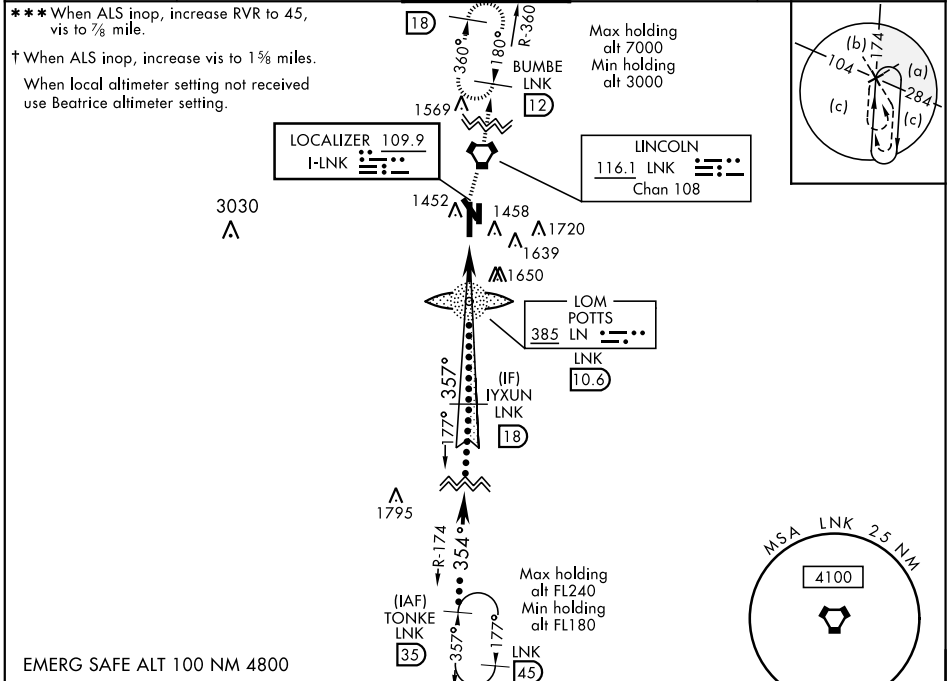
DME, RADAR required.

A5
A5

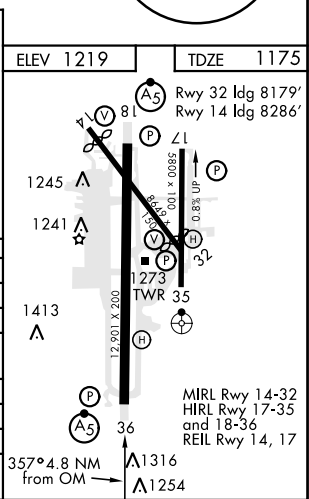
\* When ALS inop, increase RVR to 40, vis to ¾ mile.  
 \*\* When ALS inop, increase vis to 1 ½ miles.

MISSED APPROACH: Climb to 1700 then climbing right turn to 3000 direct LNK VORTAC then via LNK R-360 to BUMBE 12 DME and hold.

ATIS <b>118.05 290.9</b>	OMAHA APP CON <b>124.0 270.3</b>	LINCOLN TOWER * <b>118.5 253.5</b>	GND CON <b>121.9 275.8</b>	CLNC DEL <b>120.7 225.4</b>
-----------------------------	-------------------------------------	---------------------------------------	-------------------------------	--------------------------------



1700	3000	BUMBE LNK 12	VGSIs and glidepath not coincident.		TONKE R-174
VORTAC	†† LOC only.	JEMVI	IYXUN Intcp LOC	FL180	
	5.8	7.8	10.6	354°	35°
	1860	2788	4000	357°	35°
	2 NM	2.8 NM			
CATEGORY	C		D		E
S-ILS 36 *	1375/24		200 (200-½)		
S-LOC 36 **	1620/45		445 (500-¾)		
CIRCLING	1760-1½		1820-2		2040-3
	541 (600-1½)	601 (700-2)		821 (900-3)	
BEATRICE ALTIMETER SETTING					
S-ILS 36 ***	1466/24		291 (300-½)		
S-LOC 36 †	1720/60		545 (600-1½)		
CIRCLING	1820-2		1920-2¼		2140-3¼
	601 (700-2)	701 (800-2¼)		921 (1000-3¼)	



# HI-ILS or LOC/DME RWY 36

NC-2, 25 FEB 2021 to 25 MAR 2021

NC-2, 25 FEB 2021 to 25 MAR 2021