

VORTAC LNK 116.1 Chan 108	APCH CRS 185°	Rwy ldg 12,901 TDZE 1195 Arprt Elev 1219
---	-------------------------	---

HI-VOR/DME or TACAN RWY 18

JAL-232 [USAF]

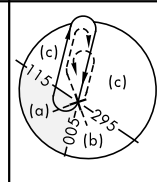
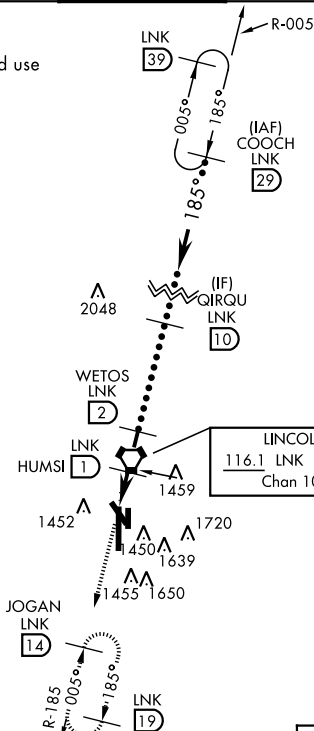
LINCOLN (KLNK)

▼	MALSR (A5)	MISSED APPROACH: Climb to 3300 via LNK VORTAC R-185 to JOGAN 14 DME and hold.		
----------	-----------------------------	---	--	--

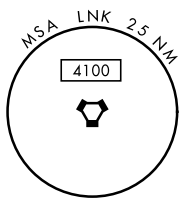
ATIS 118.05 290.9	OMAHA APP CON 124.0 270.3	LINCOLN TOWER ★ 118.5 253.5	GND CON 121.9 275.8	CLNC DEL 120.7 225.4
-----------------------------	-------------------------------------	---------------------------------------	-------------------------------	--------------------------------

Inoperative table does not apply.

When local altimeter setting not received use Beatrice altimeter setting.



LINCOLN
116.1 LNK
Chan 108

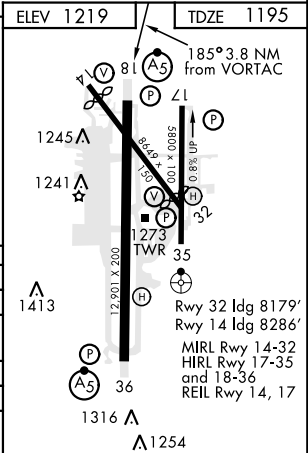
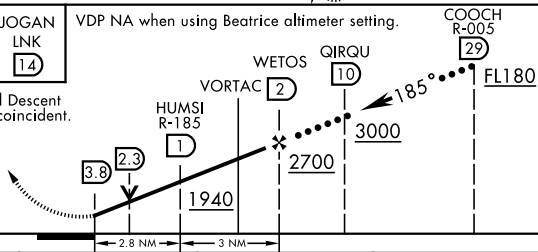


RADAR REQUIRED

EMERG SAFE ALT 100 NM 4800

3300	JOGAN LNK 14	VDP NA when using Beatrice altimeter setting.	COOCH R-005
------	--------------	---	-------------

VGSI and Descent angle not coincident.



CATEGORY	C	D	E
S-18	1760-1½	1720-1½	525 (600-1½)
CIRCLING	541 (600-1½)	601 (700-2)	821 (900-3)
BEATRICE ALTIMETER SETTING			
S-18	1860-1½	1820-1¾	625 (700-1¾)
CIRCLING	641 (700-1½)	701 (800-2¼)	921 (1000-3¼)

HI-VOR/DME or TACAN RWY 18

NC-2, 25 FEB 2021 to 25 MAR 2021

NC-2, 25 FEB 2021 to 25 MAR 2021