


LOC I-OCZ 111.1	APP CRS 177°	Rwy Idg 12901
		TDZE 1195
		Apt Elev 1219

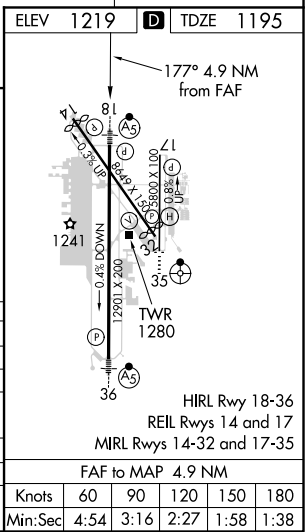
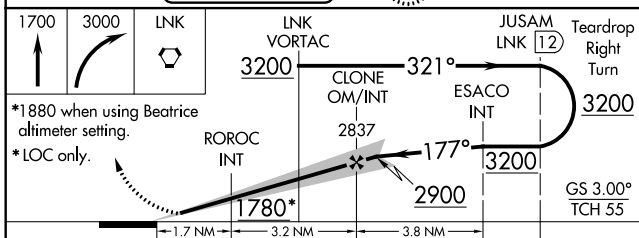
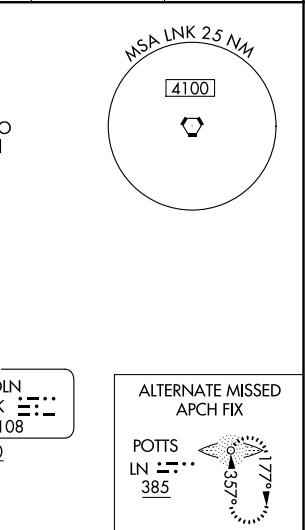
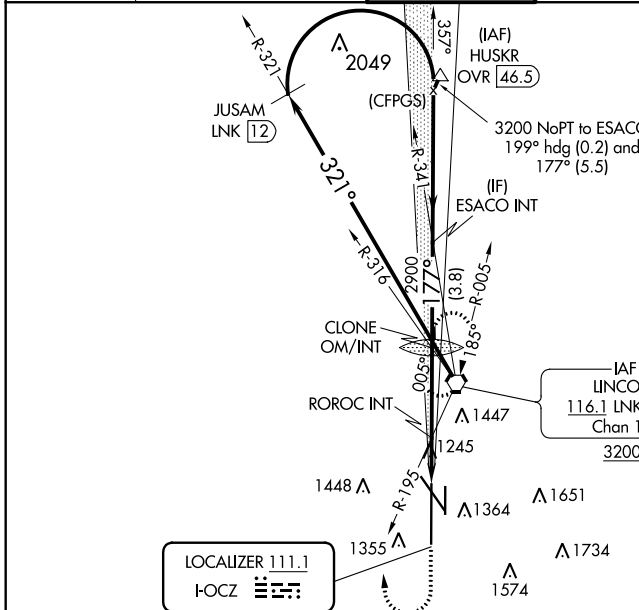
ILS or LOC RWY 18

LINCOLN (LNK)

▽ When local altimeter setting not received use Beatrice altimeter setting and increase all DA 91 feet and all MDA 100 feet, increase S-LOC 18 Cat C/D/E visibility to 1½, Circling Cat C visibility to 2 and Cat D visibility to 2¼; increase ROROC fix minimums S-LOC 18 Cat C/D/E visibility to 1¾, Circling Cat C visibility to 1¾ and Cat D visibility to 2¼. For inop MALSRS, increase S-ILS 18 Cat E visibility to RVR 4000, S-LOC 18 Cat E visibility to 1¾, and ROROC fix minimums S-LOC 18 Cat E visibility to 1½. For inop MALSRS when using Beatrice altimeter setting, increase S-ILS 18 all Cats visibility to RVR 4500, S-LOC 18 Cat E visibility to 2, and ROROC fix minimums S-LOC 18 Cat C visibility to 1¾. Cat D and E Straight-in minimums NA when using Beatrice altimeter setting. #RVR 1800 authorized with use of FD or AP or HUD to DA.

MALSRS

MISSED APPROACH:
 Climb to 1700 then climbing right turn to 3000 direct LNK VORTAC and hold.

ATIS 118.05 290.9	OMAHA APP CON 124.0 270.3	LINCOLN TOWER★ 118.5(CTAF) 253.5	GND CON 121.9 275.8	CLNC DEL 120.7 225.4	UNICOM 122.95
-----------------------------	-------------------------------------	--	-------------------------------	--------------------------------	-------------------------



CATEGORY	A	B	C	D	E
S-ILS 18#	1395/24 200 (200-½)				
S-LOC 18	1780/24	585 (600-½)	1780-1¼		585 (600-1¼)
CIRCLING	1780-1	561 (600-1)	1780-1¾	1820-2	2040-3
ROROC FIX MINIMUMS (DUAL VOR RECEIVERS REQUIRED)					
S-LOC 18	1720/24	525 (600-½)	1720/55		525 (600-1)
CIRCLING	1720-1	1760-1	1760-1½	1820-2	2040-3
	501 (600-1)	541 (600-1)	541 (600-1½)	601 (700-2)	821 (900-3)

NC-2, 25 FEB 2021 to 25 MAR 2021

NC-2, 25 FEB 2021 to 25 MAR 2021