


LOC I-INS <b>108.7</b>	APP CRS <b>077°</b>	Rwy Ldg <b>6118</b>
		TDZE <b>399</b>
		Apt Elev <b>403</b>

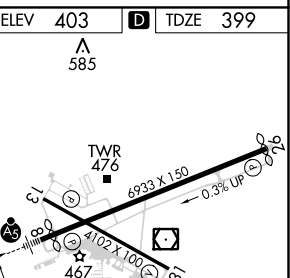
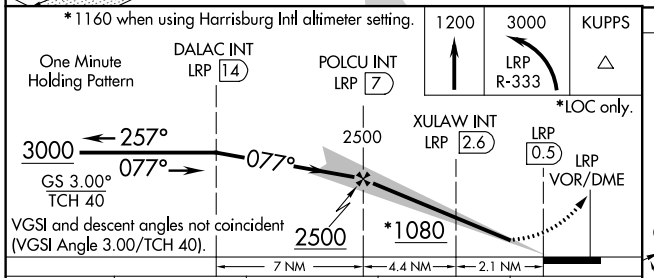
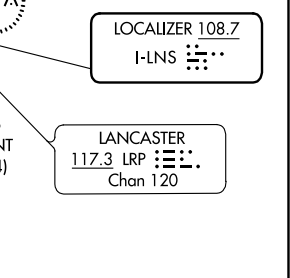
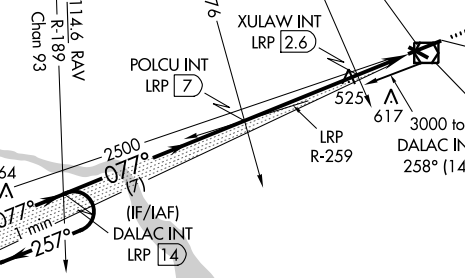
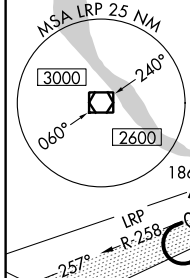
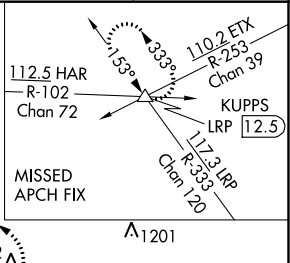
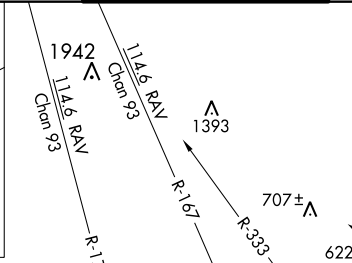
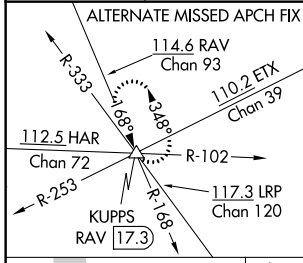
# ILS or LOC RWY 8

LANCASTER (LNS)

**▼** Night landing: Rwy 13, 31 NA. When local altimeter setting not received, use Harrisburg Intl altimeter setting and increase all DA 64 feet and all MDA 80 feet, increase S-LOC 8 Cats C and D visibility ¼ mile and increase Circling Cat C visibility ¼ mile. XULAW Fix minimums increase S-LOC 8 Cats C and D visibility ¼ mile and increase Circling Cats B, C, and D visibility ½ mile. For inop MALSRL, increase S-LOC 8 Cats C and D visibility ¾ mile. For inop MALSRL when using Harrisburg Intl altimeter setting increase S-ILS 8 visibility all Cats ½ mile, S-LOC 8 Cats B visibility ¾ mile, Cat C, D 1 mile, increase Circling Cat B, D visibility ¼ mile. XULAW Fix minimums increase S-LOC 8 Cats C and D visibility to 1¾ mile and Circling Cat C visibility to 1¾ mile.

**MALSRL**  
  
**MISSED APPROACH:** Climb to 1200 then climbing left turn to 3000 on LRP VOR/DME R-333 to KUPPS INT/LRP 12.5 DME and hold.

ATIS <b>125.675</b>	HARRISBURG APP CON <b>126.45 281.525</b>	<b>LANCASTER TOWER*</b> <b>120.9 (CTAF) 0 251.1</b>	GND CON <b>121.8</b>	UNICOM <b>122.95</b>
------------------------	---	--	-------------------------	-------------------------



CATEGORY	A	B	C	D
S-ILS 8		599-½	200 (200-½)	
S-LOC 8	1080-½	681 (700-½)	1080-1½	681 (700-1½)
CIRCLING	1080-1	677 (700-1)	1080-2	1080-2¼ 677 (700-2¼)
XULAW FIX MINIMUMS (DUAL VOR RECEIVERS OR DME REQUIRED)				
S-LOC 8	800-½	401 (400-½)	800-¾	401 (400-¾)
CIRCLING	940-1	537 (600-1)	940-1½	960-2 537 (600-1½)

FAF to MAP 6.5 NM					
Knots	60	90	120	150	180
Min:Sec	6:30	4:20	3:15	2:36	2:10

NE-4, 25 FEB 2021 to 25 MAR 2021

NE-4, 25 FEB 2021 to 25 MAR 2021