

WAAS CH <b>77915</b> <b>W08A</b>	APP CRS <b>077°</b>	Rwy Idg TDZE <b>399</b> Apt Elev <b>403</b>	<b>6118</b>
--	------------------------	---	-------------

# RNAV (GPS) RWY 8

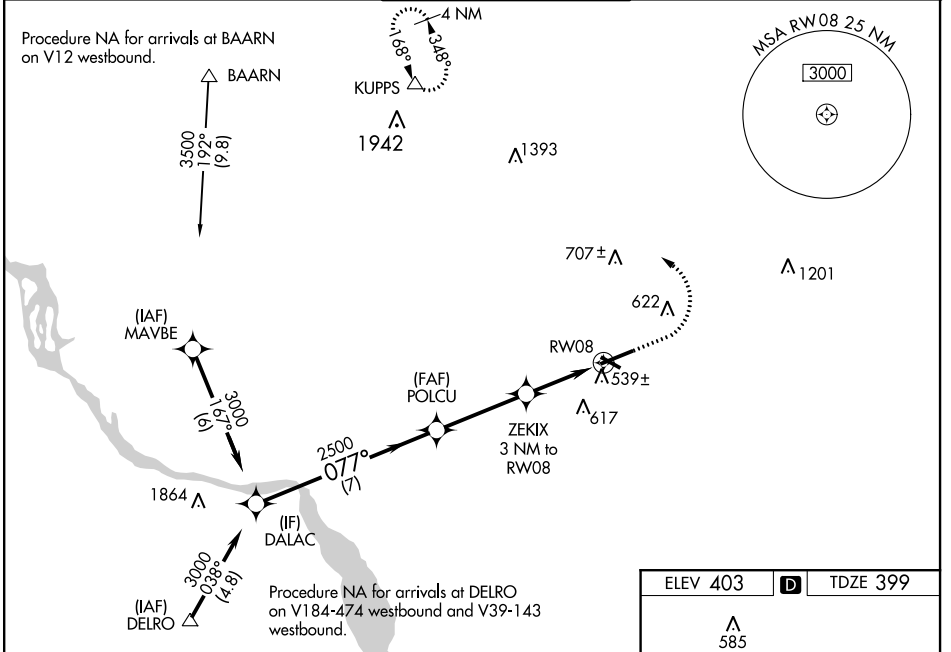
LANCASTER (LNS)

For uncompensated Baro-VNAV systems, LNAV/VNAV NA below -15°C (5°F) or above 54°C (130°F). DME/DME RNP-0.3 NA. When local altimeter setting not received, use Harrisburg Intl altimeter setting and increase all DA 64 feet and all MDA 80 feet, increase LNAV/VNAV all Cats visibility 1/4 mile, LNAV and Circling Cats C and D visibility 1/4 mile. Baro-VNAV and VDP NA when using Harrisburg Intl altimeter setting. Night landing: Rwy 13, 31 NA. For inoperative MALSRR increase LNAV/VNAV all Cats visibility to 1 1/2 mile, and LNAV Cats C/D visibility to 1 1/2 mile. For inoperative MALSRR when using Harrisburg Intl altimeter setting, increase LPV all Cats visibility to 7/8 mile, LNAV/VNAV all Cats visibility to 1 1/2 mile and LNAV Cats C/D visibility to 1 1/2 mile.

**MALSRR**

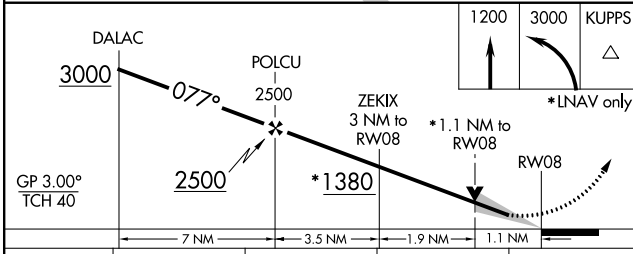
**MISSED APPROACH:**  
Climb to 1200 then climbing left turn to 3000 direct KUPPS and hold.

ATIS <b>125.675</b>	HARRISBURG APP CON <b>126.45 281.525</b>	<b>LANCASTER TOWER ★</b> <b>120.9 (CTAF) 251.1</b>	GND CON <b>121.8</b>	UNICOM <b>122.95</b>
------------------------	---	---	-------------------------	-------------------------



NE-4, 25 FEB 2021 to 25 MAR 2021

NE-4, 25 FEB 2021 to 25 MAR 2021



ELEV 403 **D** TDZE 399

077° to RWY 8

REIL Rwy 31  
HIRL Rwy 8-26  
MIRL Rwy 13-31

CATEGORY	A		B		C		D	
LPV DA	599-1/2		200 (200-1/2)					
LNAV/VNAV DA	784-7/8		385 (400-7/8)					
LNAV MDA	800-1/2 401 (400-1/2)		800-3/4 401 (400-3/4)					
CIRCLING	940-1 537 (600-1)		940-1 1/2 537 (600-1 1/2)		960-2 557 (600-2)			