

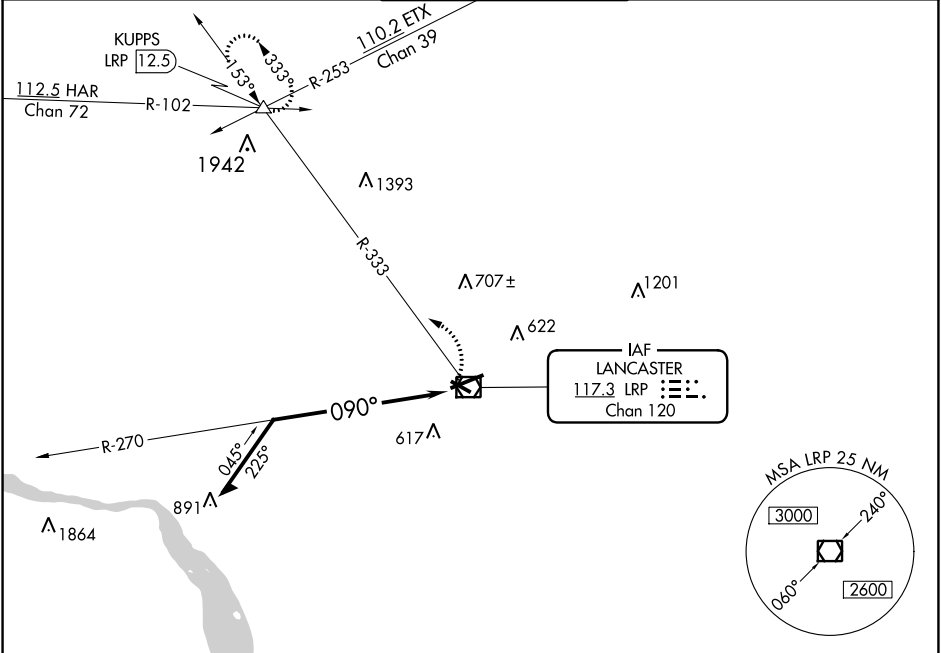
VOR/DME LRP 117.3 Chan 120	APP CRS 090°	Rwy Idg 6118 TDZE 399 Apt Elev 403
--	------------------------	---

VOR RWY 8

LANCASTER (LNS)

<p>▼ Night landing: Rwy 13, 31 NA. Inop table does not apply. ▲ When local altimeter setting not received, use Harrisburg Init altimeter setting and increase all MDA 80 feet.</p>	<p>MALSR </p>	<p>MISSED APPROACH: Climbing left turn to 3000 via LRP VOR/DME R-333 to KUPPS INT/LRP 12.5 DME and hold.</p>
--	--------------------	--

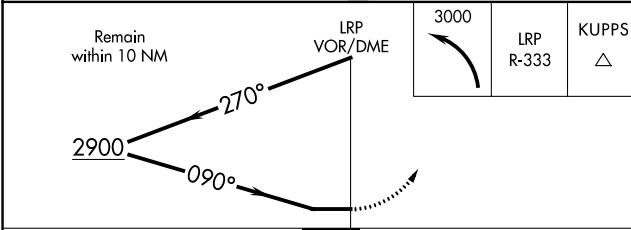
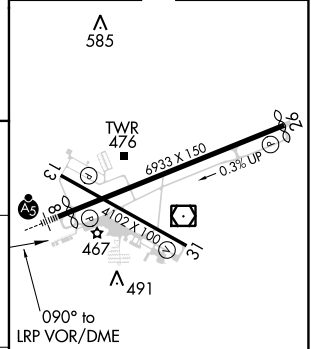
ATIS 125.675	HARRISBURG APP CON 126.45 281.525	LANCASTER TOWER ★ 120.9 (CTAF) 251.1	GND CON 121.8	UNICOM 122.95
------------------------	---	--	-------------------------	-------------------------



NE-4, 25 FEB 2021 to 25 MAR 2021

NE-4, 25 FEB 2021 to 25 MAR 2021

ELEV 403	D	TDZE 399
----------	----------	----------



CATEGORY	A	B	C	D
S-8	1400-1¼ 1001 (1000-1¼)	1400-1½ 1001 (1000-1½)	1400-3	1001 (1000-3)
CIRCLING	1400-1¼ 997 (1000-1¼)	1400-1½ 997 (1000-1½)	1400-3	997 (1000-3)

REIL Rwy 31 **1**
 HIRL Rwy 8-26 **1**
 MIRL Rwy 13-31 **1**