

VOR/DME LRP 117.3 Chan 120	APP CRS 247°	Rwy Idg 6118 TDZE 384 Apt Elev 403
--	------------------------	---

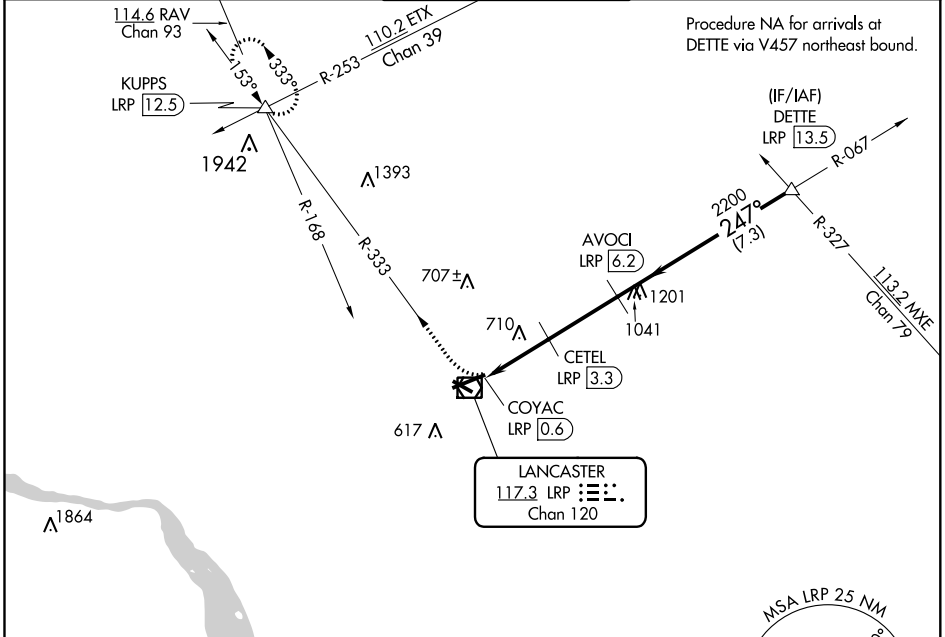
VOR/DME RWY 26

LANCASTER (LNS)

▼ Night landing: Rwy 13, 31 NA. Helicopter visibility reduction below $\frac{3}{4}$ SM NA.
▲ When local altimeter setting not received, use Harrisburg Intl altimeter setting and increase all MDA 80 feet and S-26 and Circling Cats C and D visibility $\frac{1}{4}$ mile.

MISSED APPROACH: Climbing right turn to 3000 via LRP VOR/DME R-333 to KUPPS INT/LRP 12.5 DME and hold.

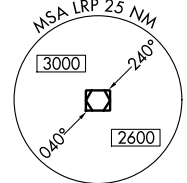
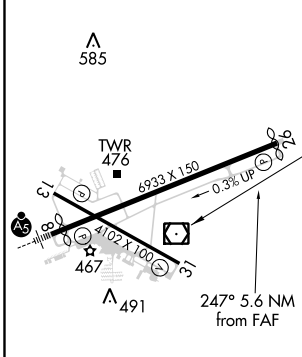
ATIS 125.675	HARRISBURG APP CON 126.45 281.525	LANCASTER TOWER★ 120.9 (CTAF) 251.1	GND CON 121.8	UNICOM 122.95
------------------------	---	---	-------------------------	-------------------------



NE-4, 25 FEB 2021 to 25 MAR 2021

NE-4, 25 FEB 2021 to 25 MAR 2021

ELEV 403	D	TDZE 384
-----------------	----------	-----------------



	3000	KUPPS LRP R-333	CETEL LRP 3.3	AVOCI LRP 6.2	DETTTE LRP 13.5
		VORTAC	COYAC LRP 0.6	2200	3000
			1260	247°	
			2.7 NM	2.9 NM	7.3 NM
REIL Rwy 31	467	476	491	710	1041
HIRL Rwy 8-26	467	476	491	710	1041
MIRL Rwy 13-31	467	476	491	710	1041