

LOM LK	APP CRS	Rwy Idg	3125
414	348°	TDZE	546
		Apt Elev	546

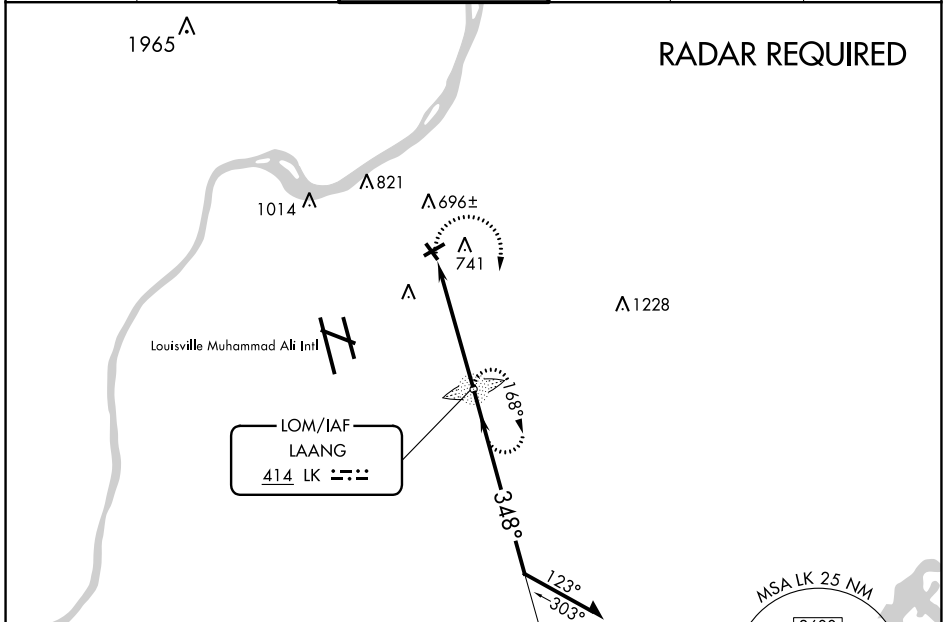
NDB RWY 33

BOWMAN FIELD (LOU)

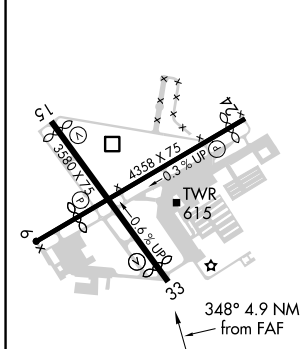
⚠ When local altimeter setting not received, use Louisville Muhammad Ali Intl altimeter setting. Rwy 33 helicopter visibility reduction below 1 SM NA. Straight-in Rwy 33 NA at night, Circling Rwy 6, 15, 33 NA at night.

MISSED APPROACH: Climbing right turn to 2500 direct LAANG LOM and hold.

ATIS 124.15	LOUISVILLE APP CON 132.075 327.0	BOWMAN TOWER* 119.5 (CTAF) 257.625	GND CON 121.8	CLNC DEL 118.9	UNICOM 122.95
-----------------------	--	---	-------------------------	--------------------------	-------------------------



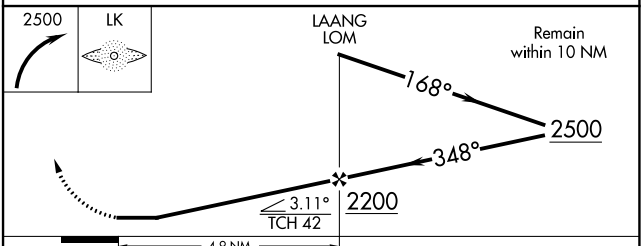
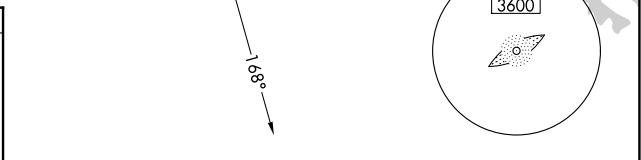
ELEV	546	D	TDZE	546
------	------------	----------	------	------------



REIL Rws 24 and 33
MIRL Rws 6-24 and 15-33

FAF to MAP 4.9 NM

Knots	60	90	120	150	180
Min:Sec	4:54	3:16	2:27	1:58	1:38



CATEGORY	A	B	C	D
S-33	1160-1	614 (700-1)	NA	
C CIRCLING	1160-1	614 (700-1)	NA	

SE-1, 25 FEB 2021 to 25 MAR 2021

SE-1, 25 FEB 2021 to 25 MAR 2021