
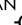




DARBY SEVEN ARRIVAL

LOUISVILLE, KENTUCKY

LOUISVILLE APP CON
 132.075 327.0
 LOU ATIS
 120.025
 SDF D-ATIS
 118.725


CLARK RGNL 
 BOWMAN FIELD 
 LOUISVILLE MUHAMMAD ALI INTL 

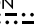
NOTE: RADAR required.
 NOTE: DME required for LONDON and UNCKL Transitions.

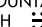
LOUISVILLE
 114.8 IIIU 
 Chan 95
 N38° 06.21'
 W85° 34.65'

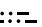
DARBY
 N37° 39.26'
 W84° 57.21'

UNCKL
 N37° 28.88'
 W84° 42.98'

LONDON
 116.1 LOZ 
 Chan 108
 N37° 01.99' - W84° 06.60'
 L-26

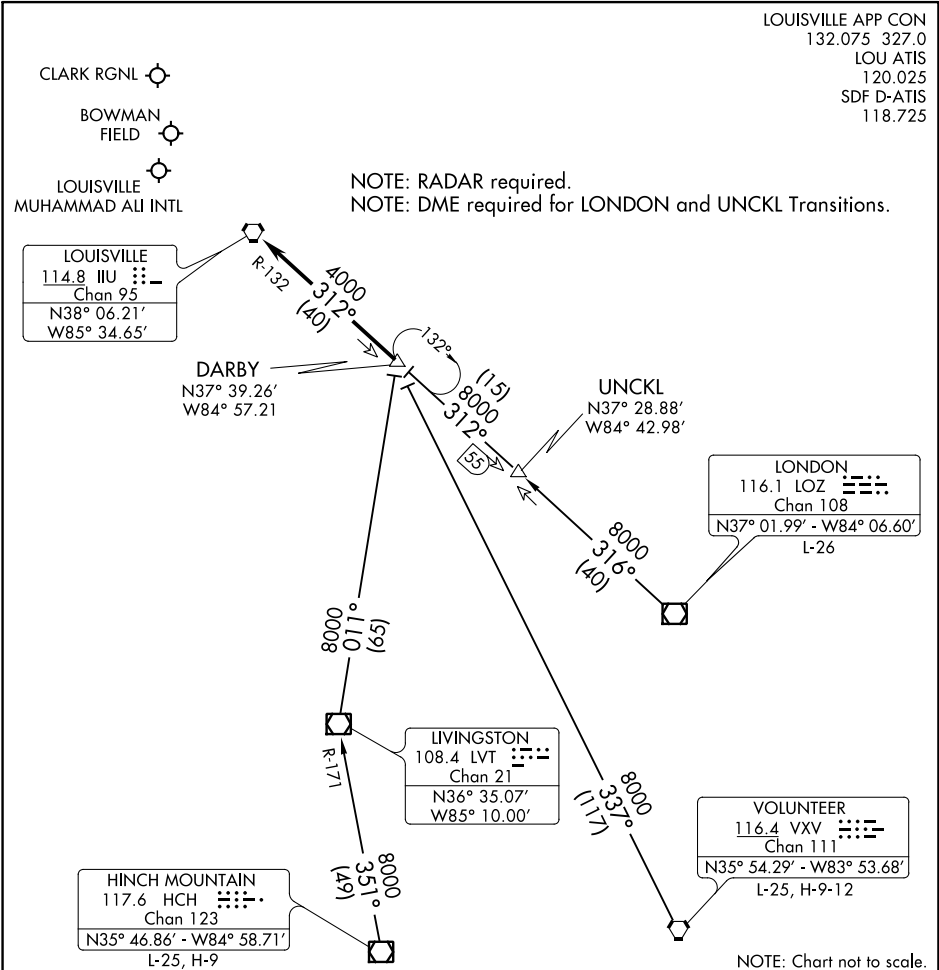
LIVINGSTON
 108.4 LVT 
 Chan 21
 N36° 35.07'
 W85° 10.00'

HINCH MOUNTAIN
 117.6 HCH 
 Chan 123
 N35° 46.86' - W84° 58.71'
 L-25, H-9

VOLUNTEER
 116.4 VXV 
 Chan 111
 N35° 54.29' - W83° 53.68'
 L-25, H-9-12

SE-1, 25 FEB 2021 to 25 MAR 2021

SE-1, 25 FEB 2021 to 25 MAR 2021



NOTE: Chart not to scale.

ARRIVAL ROUTE DESCRIPTION

HINCH MOUNTAIN TRANSITION (HINCH.DARBY7): From over HCH VOR/DME via HCH R-351 and LVT R-171 to LVT VOR/DME, then via LVT R-011 to DARBY INT. Thence. . .

LONDON TRANSITION (LOZ.DARBY7): From over LOZ VOR/DME via LOZ R-316 to UNCKL INT, then via IIIU R-132 to DARBY INT. Thence. . .

UNCKL TRANSITION (UNCKL.DARBY7): From over UNCKL INT via IIIU R-132 to DARBY INT. Thence. . .

VOLUNTEER TRANSITION (VXV.DARBY7): From over VXV VORTAC via VXV R-337 to DARBY INT. Thence. . .

. . . from DARBY INT on IIIU R-132 to IIIU VORTAC. Expect radar vectors to final course.

DARBY SEVEN ARRIVAL

(DARBY.DARBY7) 15AUG19

LOUISVILLE, KENTUCKY