

LOC/DME I-LOZ 110.9 Chan 46	APP CRS 057°	Rwy Idg TDZE Apt Elev	5000 1212 1212
---	------------------------	-----------------------------	---

ILS or LOC RWY 6

LONDON-CORBIN AIRPORT-MAGEE FIELD (LOZ)

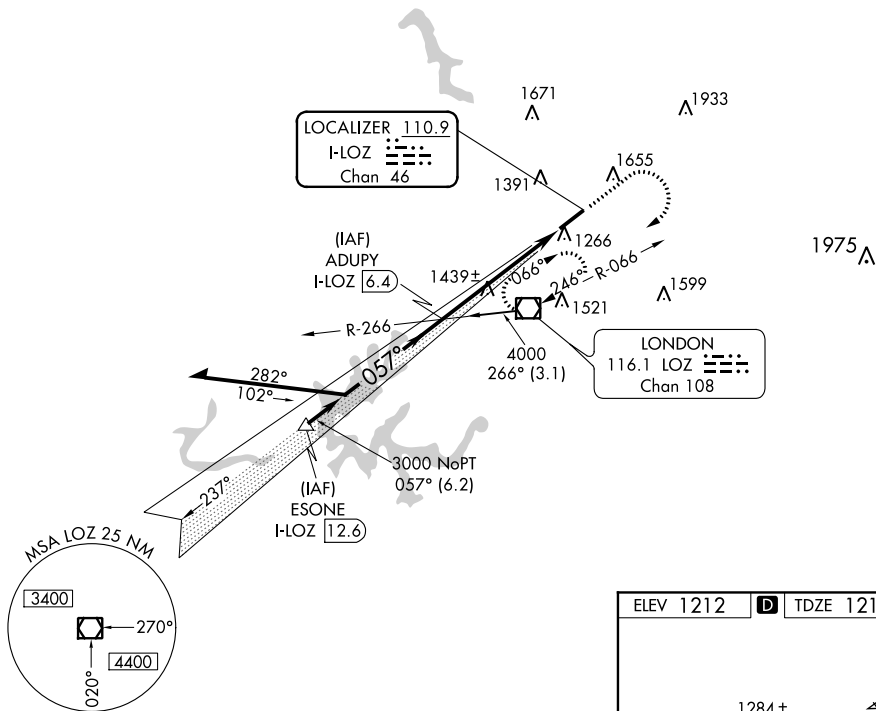
⚠ Visibility reduction by helicopters NA. VDP NA when using Somerset altimeter setting. When local altimeter setting not received, use Somerset altimeter setting and increase all DAs/MDAs 100 feet, and increase visibility S-ILS 6 ¼ mile all Cats, S-LOC 6 Cat C ¼ mile Cat D ½ mile and Circling Cats C/D ¼ mile.

MISSED APPROACH: Climb to 2000 then climbing right turn to 4000 direct LOZ VOR/DME and hold, continue climb-in-hold to 4000.

ASOS
119.075

INDIANAPOLIS CENTER
124.625 371.925

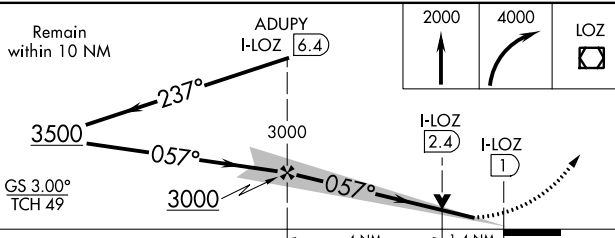
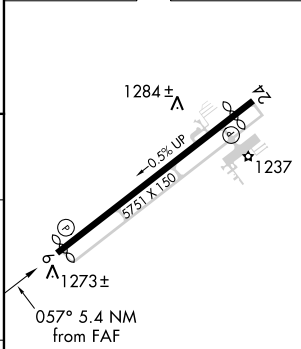
UNICOM
123.0 (CTAF)



SE-1, 25 FEB 2021 to 25 MAR 2021

SE-1, 25 FEB 2021 to 25 MAR 2021

ELEV 1212 **D** TDZE 1212



CATEGORY	A	B	C	D
S-ILS 6		1462-1	250 (300-1)	
S-LOC 6	1720-1	508 (600-1)	1720-1½	508 (600-1½)
CIRCLING	1780-1	568 (600-1)	2040-2½ 828 (900-2½)	2040-2¾ 828 (900-2¾)

MIRL Rwy 6-24 **D**
REIL Rwys 6 and 24 **D**

FAF to MAP 5.4 NM

Knots	60	90	120	150	180
Min:Sec	5:24	3:36	2:42	2:10	1:48

ILS or LOC RWY 6