

WAAS CH <b>65799</b> <b>W06A</b>	APP CRS <b>057°</b>	Rwy Idg TDZE Apt Elev	<b>5000</b> <b>1212</b> <b>1212</b>
--	------------------------	-----------------------------	---

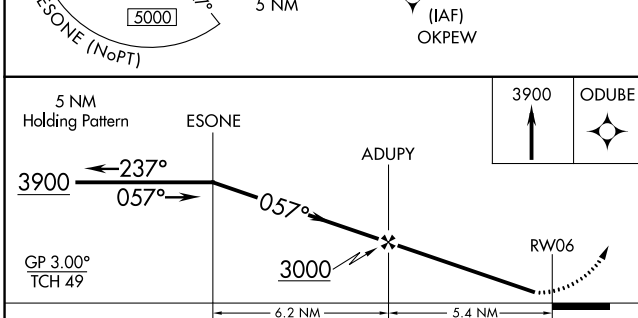
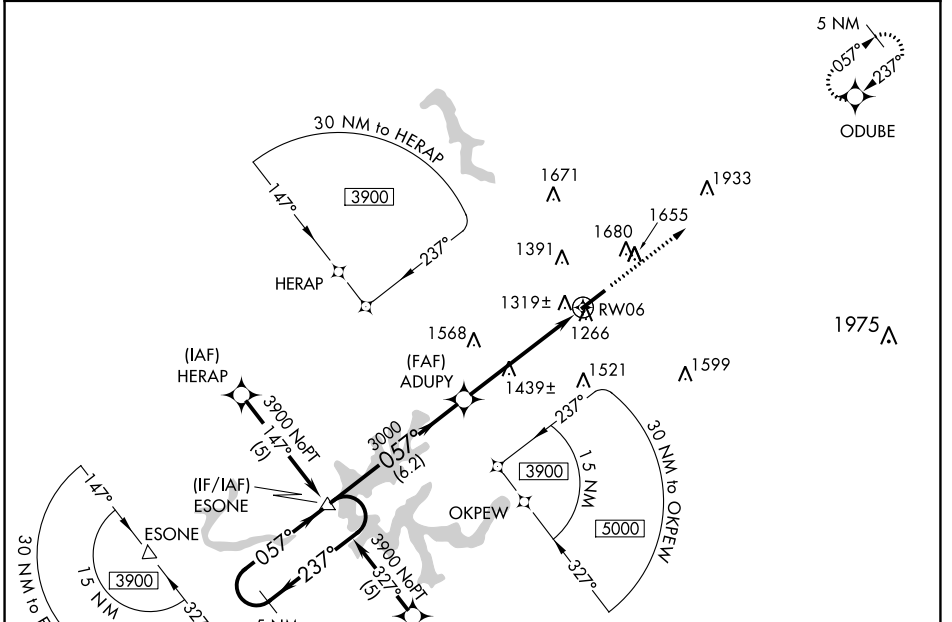
# RNAV (GPS) RWY 6

LONDON-CORBIN AIRPORT-MAGEE FIELD (LOZ)

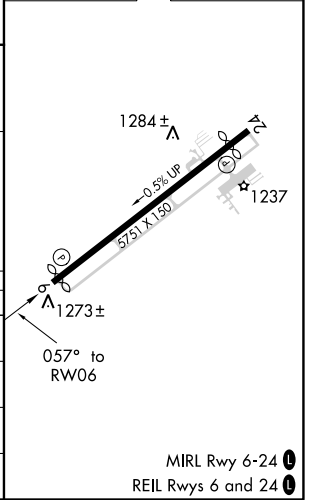
**▽** DME/DME RNP-0.3 NA. Visibility reduction by helicopters NA. When local altimeter setting not received, use Somerset altimeter setting and increase all DAs/MDAs 100 feet and increase visibility LPV ¼ mile all Cats, LNAV/VNAV ½ mile all Cats, LNAV Cat C ¼ mile and Cat D ½ mile, and Circling Cat C/D ¼ mile. For uncompensated Baro-VNAV systems, LNAV/VNAV NA below -17° C (2° F) or above 46° C (116° F) Baro-VNAV and VDP NA when using Somerset altimeter setting.

**▲** MISSED APPROACH: Climb to 3900 direct ODUBE and hold.

ASOS <b>119.075</b>	INDIANAPOLIS CENTER <b>124.625 371.925</b>	UNICOM <b>123.0 (CTAF) 0</b>
------------------------	---	---------------------------------



ELEV 1212	<b>D</b> TDZE 1212
-----------	--------------------



CATEGORY	A	B	C	D
LPV DA		1466-1	254 (300-1)	
LNAV/VNAV DA		1602-1¼	390 (400-1¼)	
LNAV MDA	1720-1	508 (600-1)	1720-1½	508 (600-1½)
CIRCLING	1780-1	568 (600-1)	2040-2½	2040-2¾ 828 (900-2¾)

# RNAV (GPS) RWY 6

SE-1, 25 FEB 2021 to 25 MAR 2021

SE-1, 25 FEB 2021 to 25 MAR 2021

MIRL Rwy 6-24  
REIL Rwy 6 and 24