

ILS or LOC RWY 25

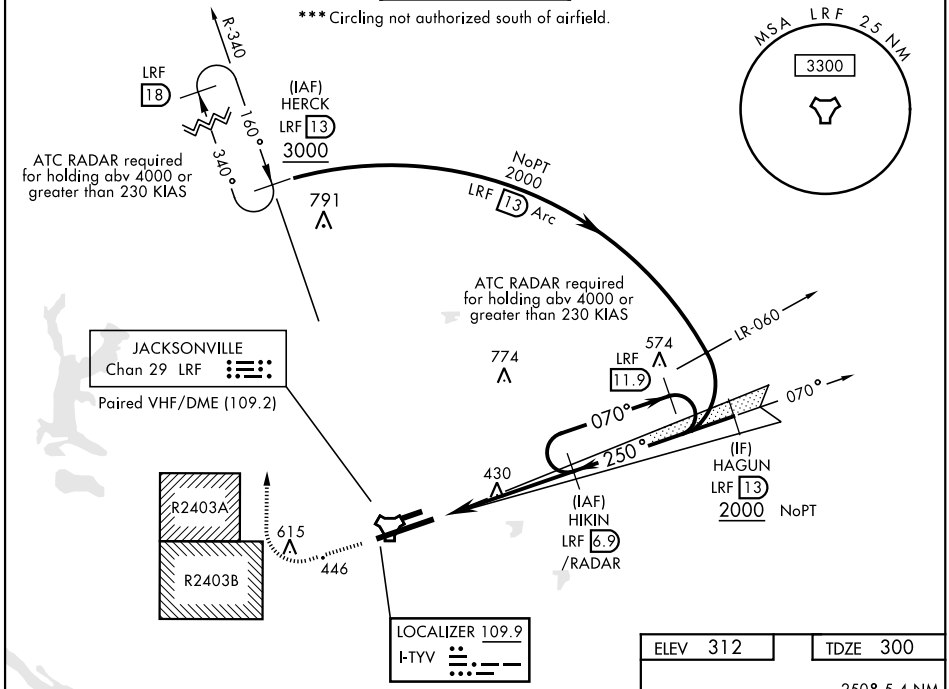
LOC I-TYV 109.9	APCH CRS 250°	Rwy Ldg 12,000
		TDZE 300
		Arpt Elev 312

AL-738 [USAF]

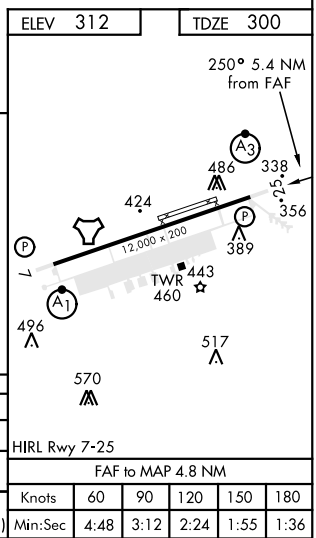
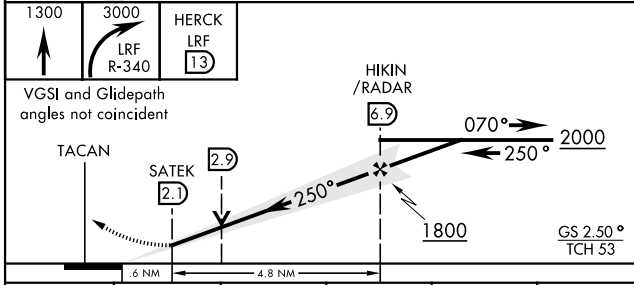
LITTLE ROCK AFB (KLRF)

RADAR or DME required. RADAR required when R-2403A / R2403B active.	SSALR 	MISSED APPROACH: Climb to 1300 then turn right climbing to 3000, intercept LRF TACAN R-340 to 13 DME (HERCK) and hold.
▼ * When ALS inop, increase RVR to 40 and vis to ¼ mile. ** When ALS inop, increase CAT AB RVR to 55, vis to 1 mile; CAT CDE vis to 1 ¼ miles.		

ATIS ★ 119.175 251.1	LITTLE ROCK APP CON 119.5 306.2	LITTLE ROCK TOWER 120.6 269.075	GND CON 132.8 275.8	CLNC DEL 253.5
--------------------------------	---	---	-------------------------------	--------------------------



EMERG SAFE ALT 100 NM 4100



CATEGORY	A	B	C	D	E
S-ILS 25 *	500/24		200	[200-½]	
S-LOC 25 **	720/24	420 (500-½)	720/40		420 (500-¾)
CIRCLING ***	780-1 468 (500-1)	860-1 548 (600-1)	880-1½ 568 (600-1½)	1040-2¼ 728 (800-2¼)	1040-2½ 728 (800-2½)

ILS or LOC RWY 25

SC-1, 25 FEB 2021 to 25 MAR 2021

SC-1, 25 FEB 2021 to 25 MAR 2021