

TACAN LRF Chan <b>29</b>	APCH CRS <b>056°</b>	Rwy Ldg <b>12,000</b> TDZE <b>309</b> Arpt Elev <b>312</b>
-----------------------------	-------------------------	--

AL-738 [USAF]

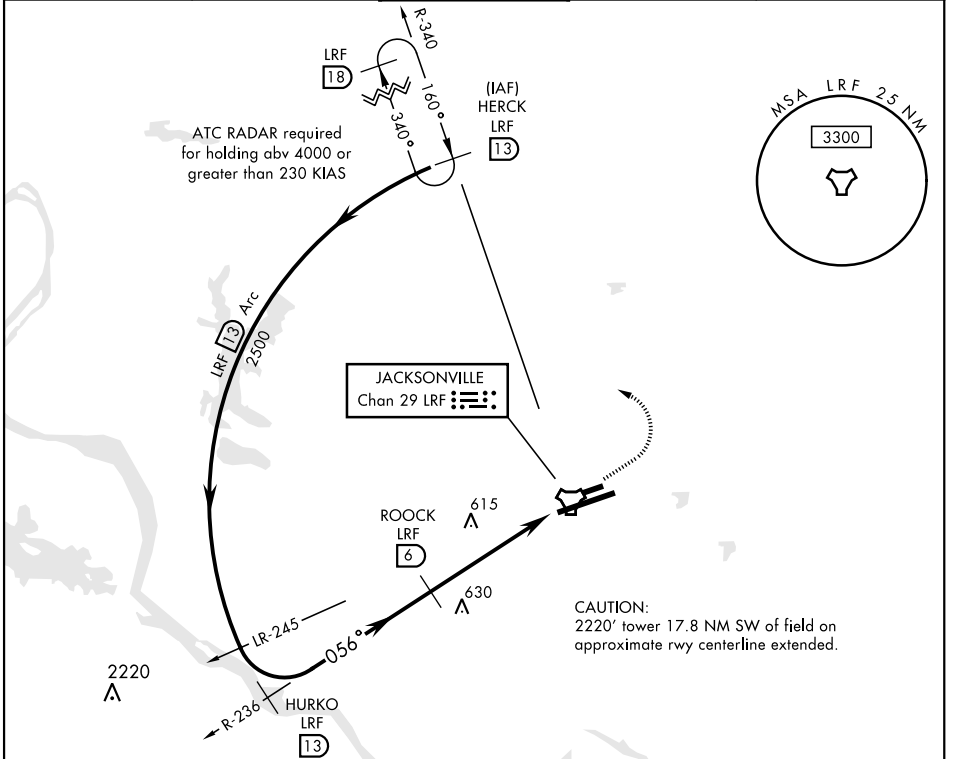
LITTLE ROCK AFB (KLRF)

▼ \* When ALS inop, increase CAT AB RVR to 55 and vis to 1 mile; CAT CDE vis to 1¼ miles.  
 \*\* Circling not authorized south of airfield.
 

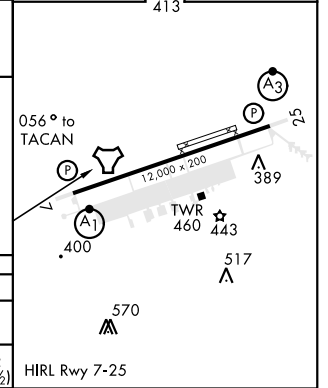
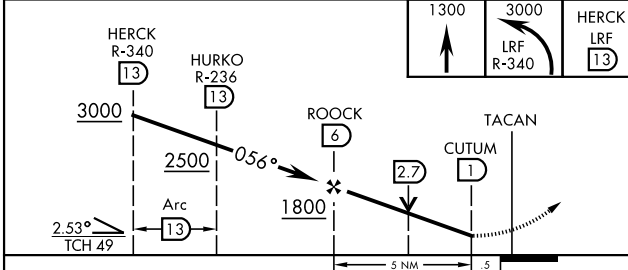
 ALSF-1  

 MISSED APPROACH: Climb to 1300 then turn left climbing to 3000, intercept LRF TACAN R-340 to 13 DME (HERCK) and hold.

ATIS ★ <b>119.175 251.1</b>	LITTLE ROCK APP CON <b>119.5 306.2</b>	LITTLE ROCK TOWER <b>120.6 269.075</b>	GND CON <b>132.8 275.8</b>	CLNC DEL <b>253.5</b>
--------------------------------	---	---	-------------------------------	--------------------------



ELEV 312	• 413	TDZE 309
----------	-------	----------



CATEGORY	A	B	C	D	E
S-7 *	900/24 591 (600-½)		900-1¾ 591 (600-1¾)		
CIRCLING **	900-1 588 (600-1)		900-1¾ 588 (600-1¾)	1040-2¼ 728 (800-2¼)	1040-2½ 728 (800-2½)

SC-1, 25 FEB 2021 to 25 MAR 2021

SC-1, 25 FEB 2021 to 25 MAR 2021