

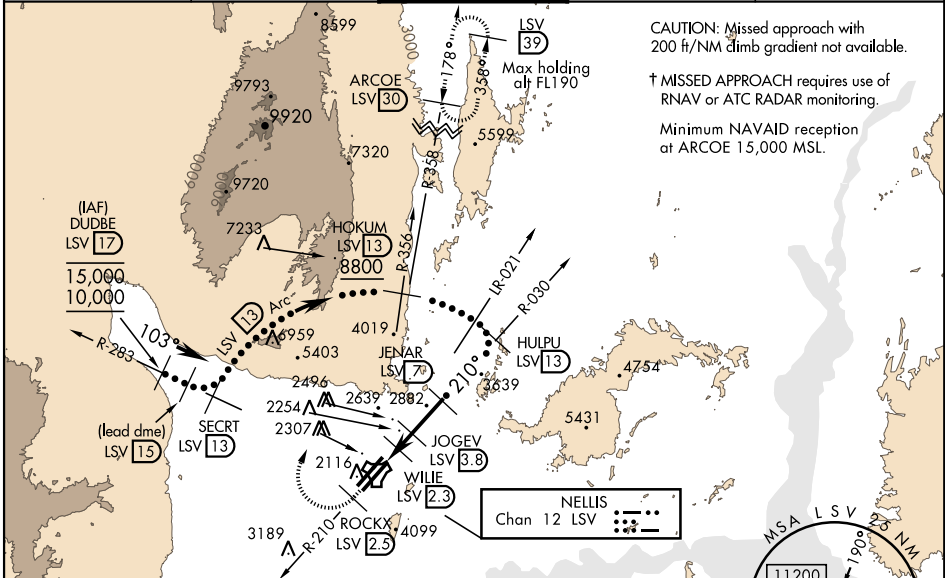
HI-TACAN Y RWY 21L

TACAN LSV Chan 12	APCH CRS 210°	Rwy ldg 21L 10,051 TDZE Arprt Elev 1865 1869	Rwy ldg 21R 10,120 TDZE 1869	JAL-227 [USAF]	NELLIS AFB (KLSV)
-----------------------------	-------------------------	----------------------------------------------------------------------------	--------------------------------------------------	----------------	-------------------

A1 * When ALS inop, increase CAT CDE vis to 1 1/4 miles.
 ** Circling not authorized E of Rwy 3R-21L.

A1 † MISSED APPROACH: Climb to 15,000, intercept LSV TACAN R-210 to 2.5 DME (ROCKX), then climbing right turn heading 020° to join LSV R-358 to ARCOE and hold, continue climb in hold to 15,000. Missed approach not for civil use.

ATIS 270.1	NELLIS APP CON 124.95 273.55	NELLIS TOWER 132.55 327.0	GND CON 121.8 275.8	CLNC DEL 120.9 289.4
----------------------	----------------------------------------	-------------------------------------	-------------------------------	--------------------------------

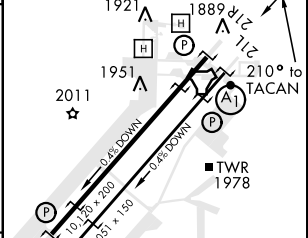
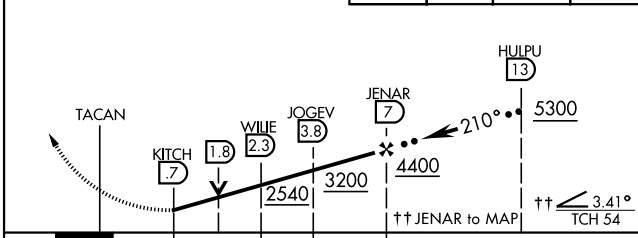


CAUTION: Missed Approach climb rate to 15,000

Knots	60	120	180	240	300	360
V/V(fpm)	383	766	1149	1532	1915	2298

Controlling Obstacle 6959'
EMERG SAFE ALT 100 NM 14,000

VGSI and descent angles not coincident (VGSI angle 3.00/TCH 54).	15,000 LSV R-210	ROCKX LSV 2.5	hdg 020°	ARCOE R-358 30	ELEV 1869	TDZE 21L 1865	TDZE 21R 1869
------------------------------------------------------------------	------------------	---------------	----------	----------------	-----------	---------------	---------------



CATEGORY	C	D	E
S-21L *	2460-1 1/4	595 (600-1 1/4)	
SIDESTEP 21R	2460-1	591 (600-1)	
CIRCLING **	2620-2 1/4 751 (800-2 1/4)	2840-3 971 (1000-3)	3040-3 1171 (1200-3)

HIRL all Rwy

HI-TACAN Y RWY 21L

SW-4, 25 FEB 2021 to 25 MAR 2021

SW-4, 25 FEB 2021 to 25 MAR 2021