

LAS VEGAS, NEVADA

TACAN X RWY 21L

TACAN LSV Chan 12	APCH CRS 210°	Rwy ldg 21L 10,051 21R 10,120	TDZE 1865 1869	Arprt Elev 1869
-------------------	---------------	-------------------------------	----------------	-----------------

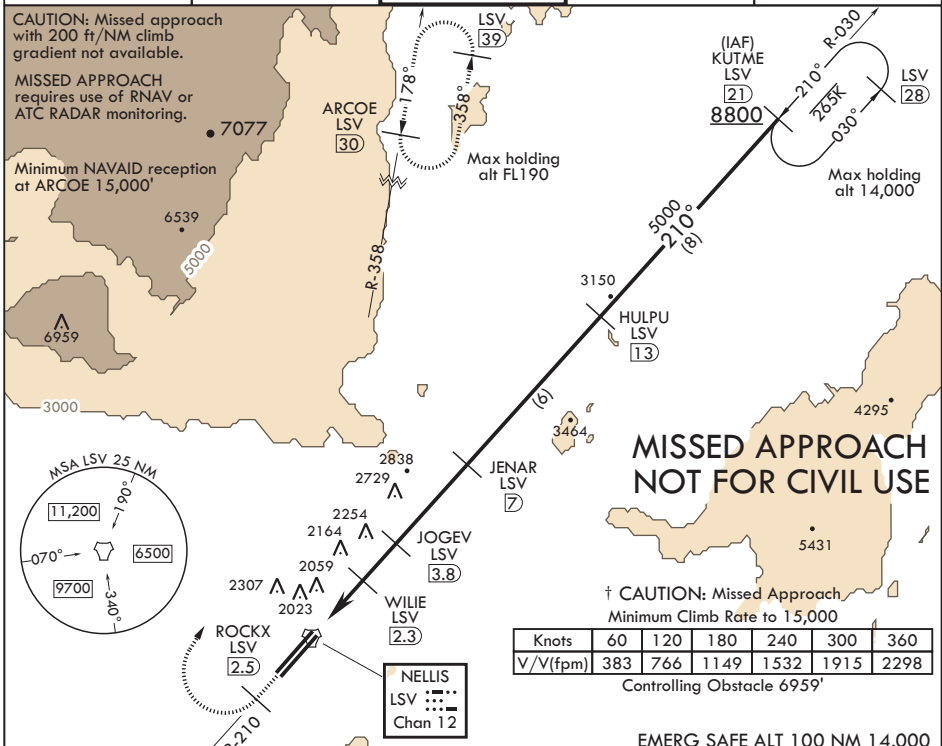
AL-227 (USAF)

NELLIS AFB (KLSV)

⚠ * When ALS inop, increase CAT AB RVR to 55, vis to 1 mile, CAT CDE vis to 1 3/4 miles.
 ** Circling not authorized E of Rwy 3R-21L.

Rwy 21L ALSF-1
 † MISSED APPROACH: Climb to 15,000, intercept LSV TACAN R-210 to 2.5 DME (ROCKX), then climbing right turn heading 020° to join LSV TACAN R-358 to ARCOE and hold, continue climb in hold to 15,000. Missed approach not for civil use.

ATIS 270.1	APP CON 124.95 273.55	TOWER 132.55 327.0	GND CON 121.8 275.8	CLNC DEL 120.9 289.4
------------	-----------------------	--------------------	---------------------	----------------------

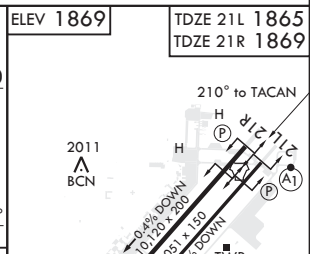
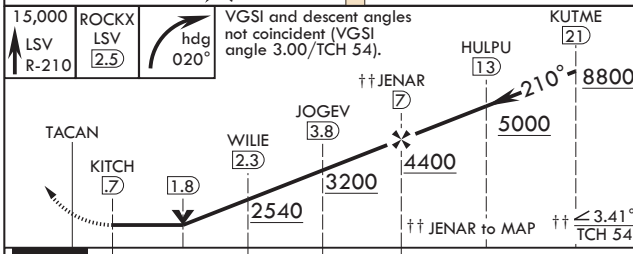


† CAUTION: Missed Approach Minimum Climb Rate to 15,000

Knots	60	120	180	240	300	360
V/V(fpm)	383	766	1149	1532	1915	2298

Controlling Obstacle 6959'

EMERG SAFE ALT 100 NM 14,000



CATEGORY	A	B	C	D	E
S-21L*	2460/24 595 (600-1/2)	2460-1 1/4 595 (600-1 1/4)			
SIDESTEP 21R	2460-1 591 (600-1)	2460-1 3/4 591 (600-1 3/4)			
CIRCLING**	2460-1 591 (600-1)	2620-1 751 (800-1)	2620-2 1/4 751 (800-2 1/4)	2840-3 971 (1000-3)	3040-3 1171 (1200-3)

ELEV 1869	TDZE 21L 1865	TDZE 21R 1869
-----------	---------------	---------------

LAS VEGAS, NEVADA
 Amdt 8 16JUL20

36°14'N - 115°02'W

NELLIS AFB (KLSV)

TACAN X RWY 21L

SW-4, 25 FEB 2021 to 25 MAR 2021

SW-4, 25 FEB 2021 to 25 MAR 2021