

WAAS CH 40107 W17A	APP CRS 163°	Rwy Idg 4200 TDZE 1047 Apt Elev 1047
--	------------------------	---

RNAV (GPS) RWY 17

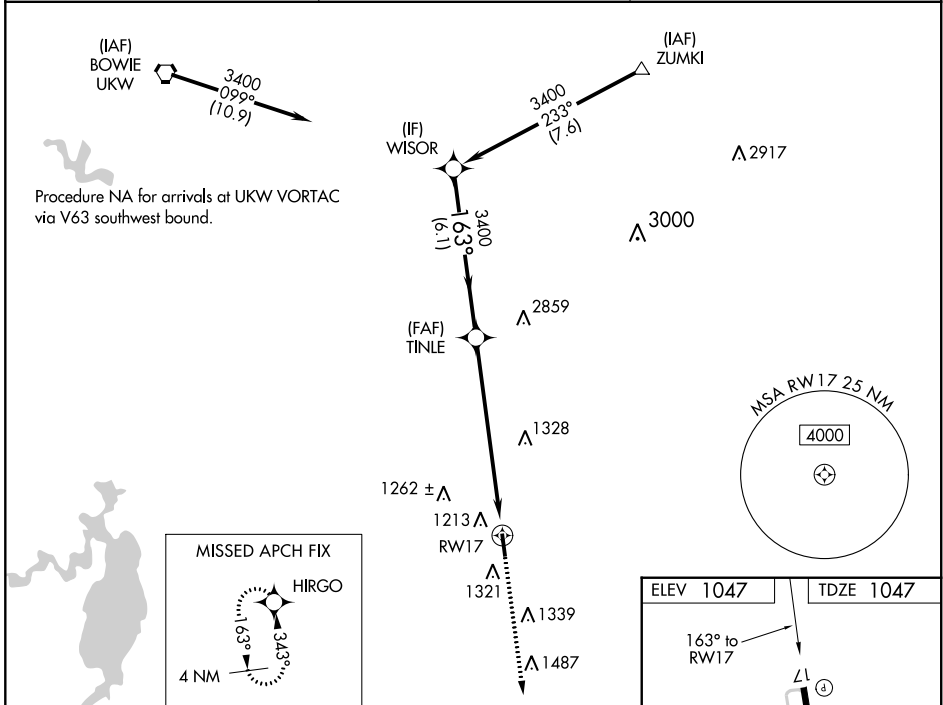
DECATUR MUNI (LUD)

RNP APCH.

⚠ When local altimeter setting not received, use Fort Worth Meacham Intl altimeter setting and increase all DAs 113 feet, and all MDAs 120 feet, increase LPV visibilities ¼ mile, LNAV/VNAV visibilities ½ mile, and circling Cat B visibility ¼ mile. Baro-VNAV and VDP NA when using Fort Worth Meacham Intl altimeter setting. For uncompensated Baro-VNAV systems, LNAV/VNAV NA below -17°C (2°F) or above 54°C (130°F).

MISSED APPROACH: Climb to 2600 direct HIRGO and hold.

AWOS-3 118.225	REGIONAL APP CON 118.1 306.95	UNICOM 122.8(CTAF) 0
--------------------------	---	--------------------------------



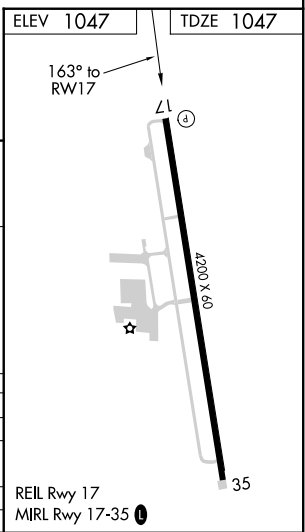
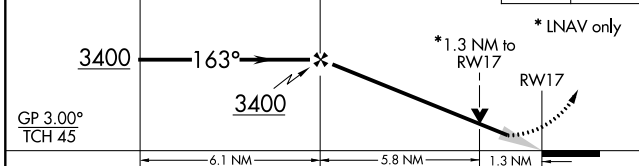
SC-2, 25 FEB 2021 to 25 MAR 2021

SC-2, 25 FEB 2021 to 25 MAR 2021

Procedure Turn NA

VGSI and RNAV glidepath not coincident (VGSI Angle 3.50/TCH 23).

2600 HIRGO



CATEGORY	A	B	C	D
LPV DA	1297-1	250 (300-1)		NA
LNAV/VNAV DA	1459-1½	412 (500-1½)		NA
LNAV MDA	1560-1	513 (600-1)		NA
C CIRCLING	1680-1	633 (700-1)		NA