

LOC/DME I-LUK <b>110.9</b> Chan <b>46</b>	APP CRS <b>025°</b>	Rwy Idg <b>6101</b> TDZE <b>481</b> Apt Elev <b>483</b>
---	------------------------	---

# LOC BC RWY 3R

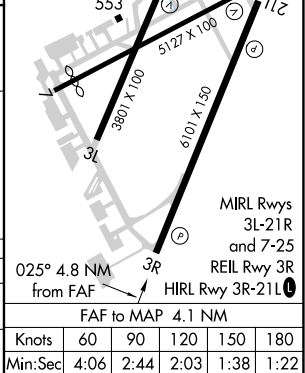
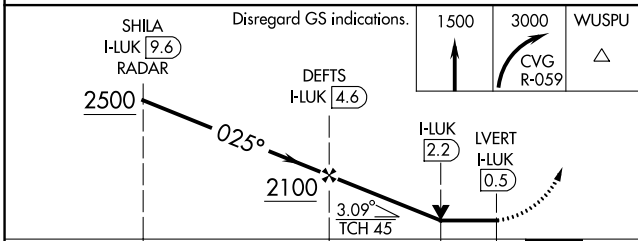
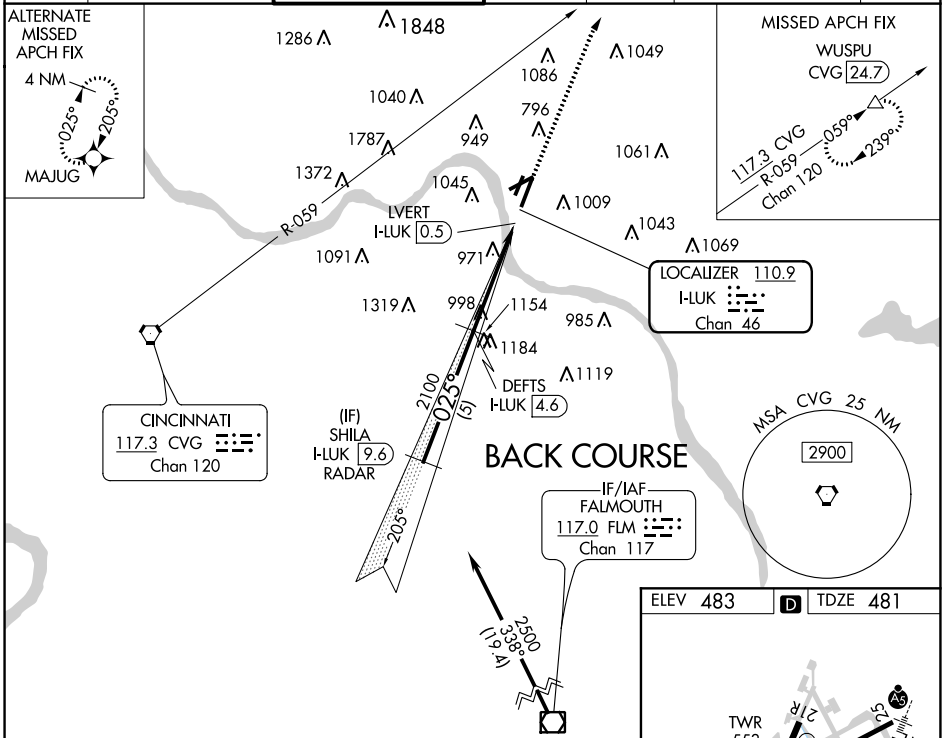
CINCINNATI MUNI AIRPORT LUNKEN FIELD (LUK)

DME or RADAR required for procedure entry.  
DME required.

**⚠** Circling NA for Cat D northwest of Rwy 7-21R. Circling Rwy 3L, 7, 21R NA at night. VDP NA with Cincinnati/Northern Kentucky Intl altimeter setting. Rwy 3R helicopter visibility reduction below 3/4 SM NA. When local altimeter setting not received, use Cincinnati/Northern Kentucky Intl altimeter setting increase all MDA 100 feet; increase Circling Cat B visibility 1/4 mile, increase Circling Cat C visibility 1/2 mile.

MISSED APPROACH: Climb to 1500 then climbing right turn to 3000 on CVG VORTAC R-059 to WUSPU/CVG 24.7 DME and hold.

ATIS <b>120.25</b>	CINCINNATI APP CON <b>121.0 254.25</b>	LUNKEN TOWER ★ <b>118.7</b> (CTAF) <b>257.8</b>	GND CON <b>121.9</b>	CLNC DEL <b>121.9</b>	CLNC DEL <b>124.9</b> (when twr closed)	UNICOM <b>122.95</b>
-----------------------	---	--	-------------------------	--------------------------	---	-------------------------



CATEGORY	A	B	C	D
S-LOC 3R	1300-1 819 (900-1)	1300-1 1/4 819 (900-1 1/4)	1300-2 1/2 819 (900-2 1/2)	819 (900-2 1/2)
<b>C</b> CIRCLING	1300-1 1/4 817 (900-1 1/4)	1360-1 1/4 877 (900-1 1/4)	1360-2 1/2 877 (900-2 1/2)	1400-3 917 (1000-3)

ELEV 483	<b>D</b> TDZE 481
Knots: 60 90 120 150 180	
Min:Sec: 4:06 2:44 2:03 1:38 1:22	

# LOC BC RWY 3R

EC-2, 25 FEB 2021 to 25 MAR 2021

EC-2, 25 FEB 2021 to 25 MAR 2021