

RNAV (GPS) RWY 3R

CINCINNATI MUNI AIRPORT LUNKEN FIELD (LUK)

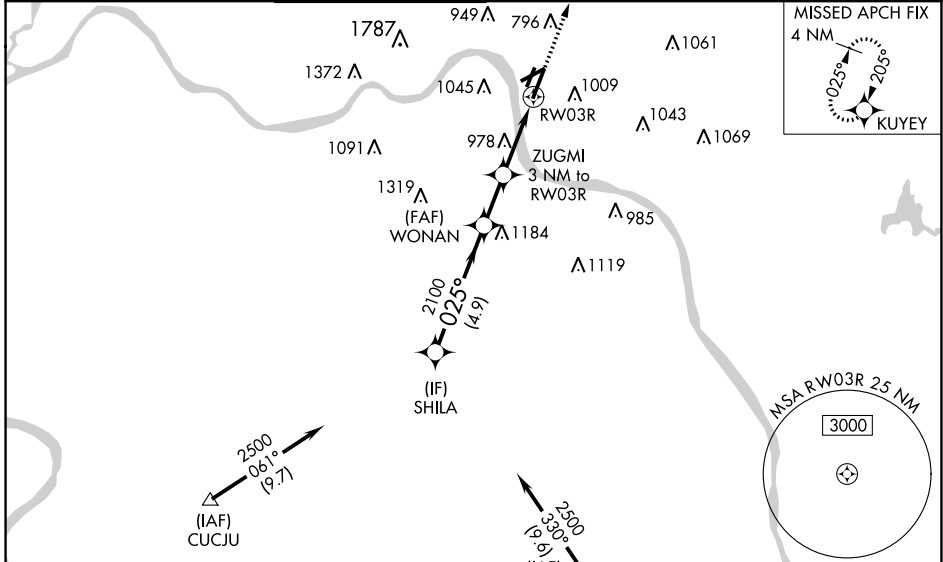
APP CRS	Rwy Idg	6101
025°	TDZE	481
	Apt Elev	483

RNP APCH.

∇ Circling NA for Cat D north of Rwy 7 and northwest of Rwy 21R. Circling Rwy 3L, 7, 21R NA at night. Rwy 3R helicopter visibility reduction below 3/4 SM NA.
⚠ When local altimeter setting not received, use Cincinnati/Northern Kentucky Intl altimeter setting and increase all MDA 100 feet and LNAV Cat A visibility 1/4 SM; increase Circling Cat B/D visibility 1/4 SM and Circling Cat C visibility 1/2 SM. VDP NA when using Cincinnati/Northern Kentucky Intl altimeter setting.

MISSED APPROACH:
 Climb to 2600 direct KUYEY and hold.

ATIS 120.25	CINCINNATI APP CON 121.0 254.25	LUNKEN TOWER ★ 118.7 (CTAF) 257.8	GND CON 121.9	CLNC DEL 121.9	CLNC DEL 124.9 (when twr closed)	UNICOM 122.95
-----------------------	---	--	-------------------------	--------------------------	---	-------------------------



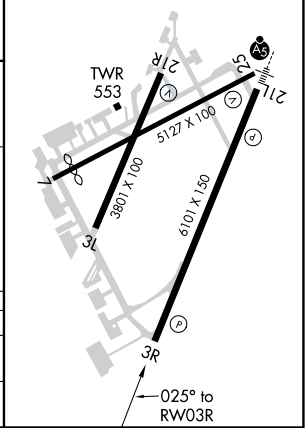
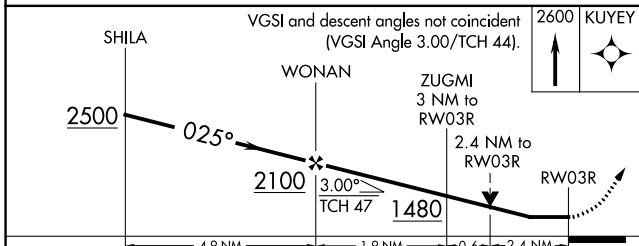
Procedure NA for arrivals at CUCJU on V97 southbound.

Procedure NA for arrivals at FLM VOR/DME on V517 southeast bound.

ELEV	483	TDZE	481
REIL Rwy 3R			
HIRL Rwy 3R-21L			
MIRL Rws 3L-21R and 7-25			

Procedure NA for arrivals at CUCJU on V97 southbound.

Procedure NA for arrivals at FLM VOR/DME on V517 southeast bound.



CATEGORY	A	B	C	D
LNAV MDA	1280-1 799 (800-1)	1280-1 1/4 799 (800-1 1/4)	1280-2 1/2	799 (800-2 1/2)
C CIRCLING	1300-1 1/4 817 (900-1 1/4)	1360-1 1/4 877 (900-1 1/4)	1360-2 1/2 877 (900-2 1/2)	1360-2 3/4 877 (900-2 3/4)

RNAV (GPS) RWY 3R

EC-2, 25 FEB 2021 to 25 MAR 2021

EC-2, 25 FEB 2021 to 25 MAR 2021