

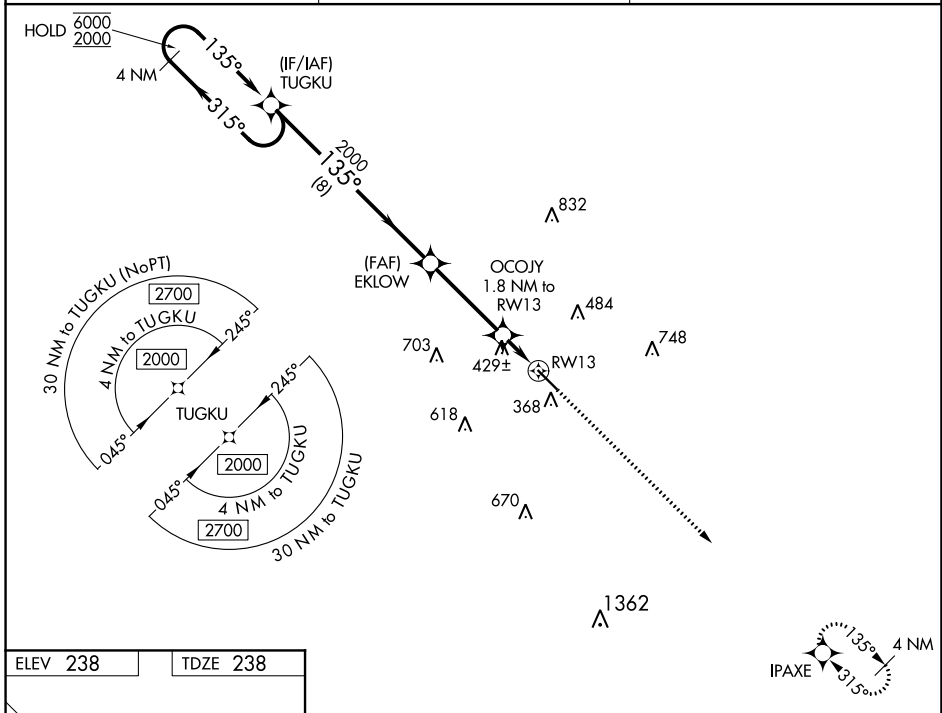
WAAS CH 45704 W13A	APP CRS 135°	Rwy Idg 5513 TDZE 238 Apt Elev 238
---------------------------------	------------------------	---

RNAV (GPS) RWY 13

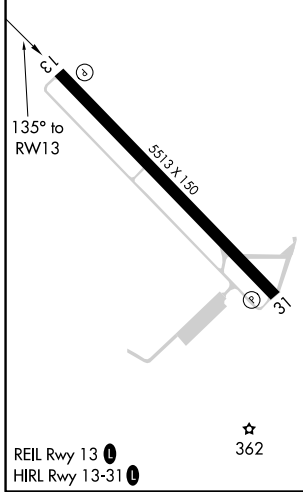
HESLER-NOBLE FIELD (LUL)

RNP APCH.	MISSED APPROACH: Climb to 2000 direct IPAXE and hold.
▼ For uncompensated Baro-VNAV systems, LNAV/VNAV NA below -15°C or above 54°C.	

AWOS-3PT 119.275	HOUSTON CENTER 126.8 327.8	UNICOM 123.05 (CTAF) 0
----------------------------	--------------------------------------	----------------------------------



ELEV 238	TDZE 238
----------	----------



4 NM Holding Pattern		VGSi and RNAV glidepath not coincident (VGSi angle 3.00/TCH 40).		2000	IPAXE
TUGKU		EKLAW	OCOJY	*LNAV only.	
6000	← 315°	135° →	1.8 NM to RWY13	*1.3 NM to RWY13	
2000	← 135°	2000			
GP 3.00° TCH 40		*840			
		8 NM	3.6 NM	0.5 NM	1.3 NM
CATEGORY	A	B	C	D	
LPV DA	488-1		250 (300-1)		
LNAV/VNAV DA	759-1¾		521 (600-1¾)		
LNAV MDA	680-1	442 (500-1)	680-1¾	680-2	442 (500-2)
			442 (500-1¾)		
CIRCLING	700-1	800-1	1040-2¼	1060-2¾	
	462 (500-1)	562 (600-1)	802 (900-2¼)	822 (900-2¾)	

SC-4, 25 FEB 2021 to 25 MAR 2021

SC-4, 25 FEB 2021 to 25 MAR 2021