

LOC/DME F-LVK 110.5 Chan 42	APP CRS 255°	Rwy ldg TDZE Apt Elev 5253 400 400
--	------------------------	--

ILS RWY 25R

LIVERMORE MUNI (LVK)

DME required.

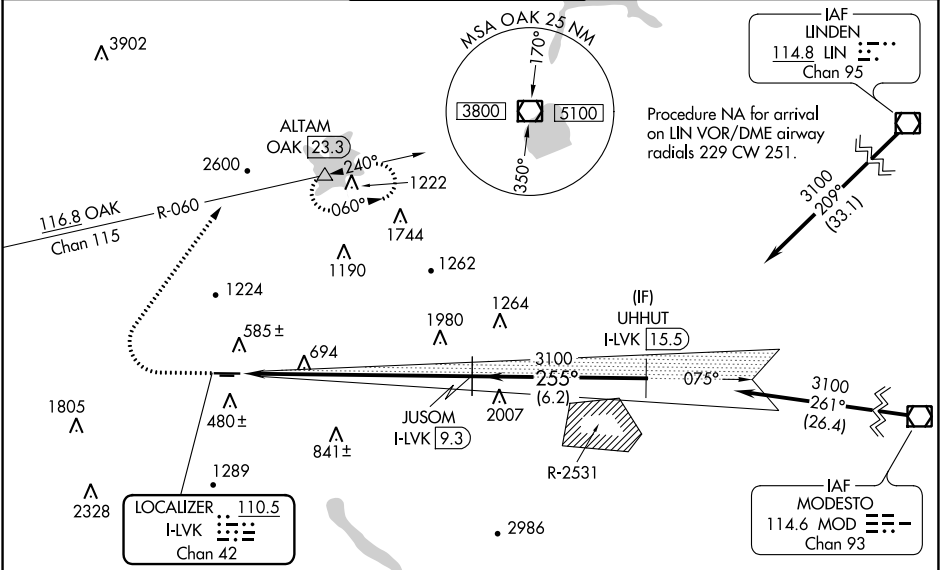
▽
▲

MALSRL

MISSED APPROACH: Climb to 1200 then climbing right turn to 5000 on heading 020° and OAK VOR/DME R-060 to ALTAM/OAK VOR/DME 23.3 DME and hold, continue climb-in-hold to 5000.

*Missed approach requires a minimum climb of 358 feet per NM to 3600, if unable to meet climb gradient, see LOC RWY 25R.

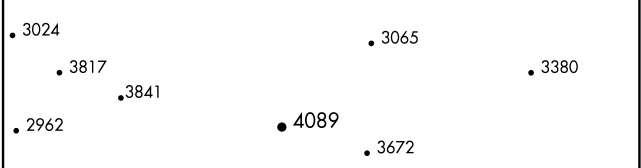
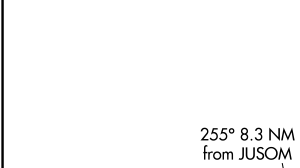
ATIS 119.65	NORCAL APP CON 123.85 278.3	LIVERMORE TOWER * 118.1(CTAF) 0 239.25	GND CON 121.6	UNICOM 122.95
-----------------------	---------------------------------------	--	-------------------------	-------------------------



SW-2, 25 FEB 2021 to 25 MAR 2021

SW-2, 25 FEB 2021 to 25 MAR 2021

ELEV 400	TDZE 400
----------	----------



1200	5000	OAK R-060	ALTAM	JUSOM I-LVK [9.3]	UHHUT I-LVK [15.5]
↑	hdg 020°	△		3100	3100
				255°	3100
				8.3 NM	6.2 NM
					GS 3.00° TCH 47

CATEGORY	A	B	C	D
S-ILS 25R		600-½	200 (200-½)	