

APP CRS <b>180°</b>	Rwy Idg TDZE Apt Elev	<b>N/A</b> <b>N/A</b> <b>329</b>
------------------------	-----------------------------	--

**RNAV (GPS)-A**  
BRUNSWICK COUNTY AIRPORT (LVL)

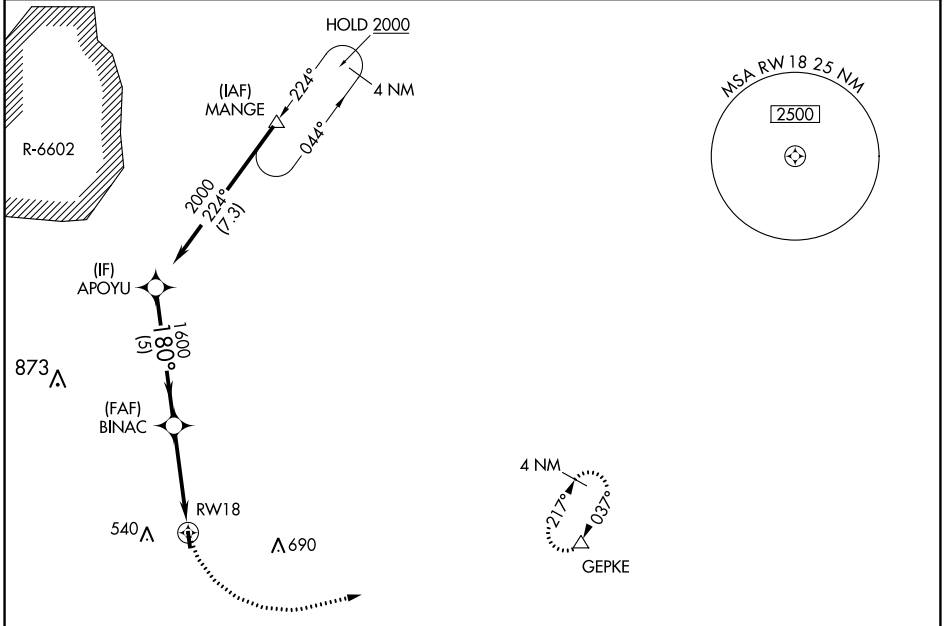
RNP APCH.

**▼** Procedure NA at night. Helicopter visibility reduction below 1 SM NA. When local altimeter setting not received, use South Hill altimeter setting and increase call MDA 60 feet.

**▲**

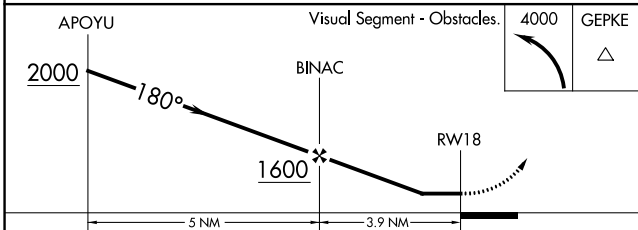
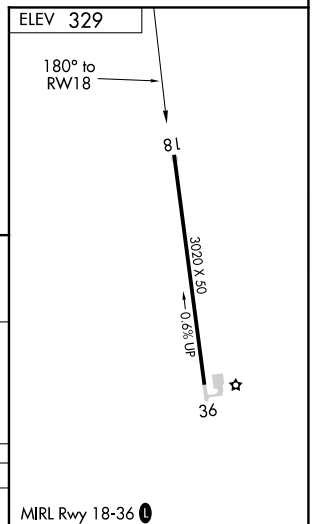
MISSED APPROACH: Climbing left turn to 4000 direct GEPKE and hold, continue climb-in-hold to 4000.

AWOS-3 <b>119.625</b>	WASHINGTON APP CON <b>118.75 377.1</b>	UNICOM <b>122.8</b> (CTAF) <b>①</b>
--------------------------	---	--



NE-3, 25 FEB 2021 to 25 MAR 2021

NE-3, 25 FEB 2021 to 25 MAR 2021



CATEGORY	A	B	C	D
<b>④</b> CIRCLING	1340-3	1011 (1100-3)	NA	

MRL Rwy 18-36 **①**