

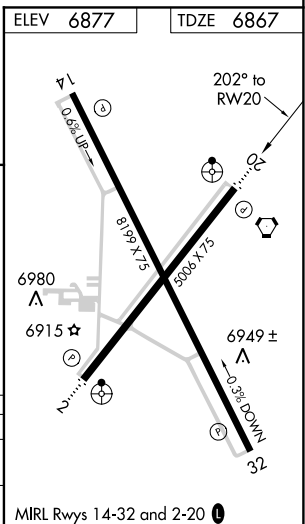
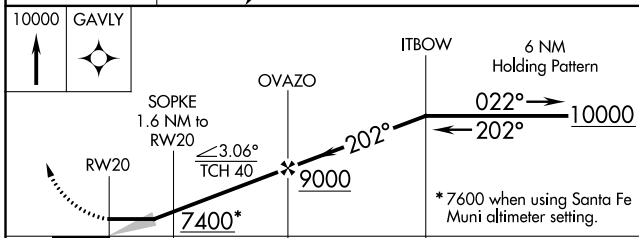
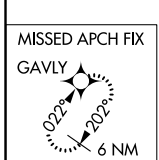
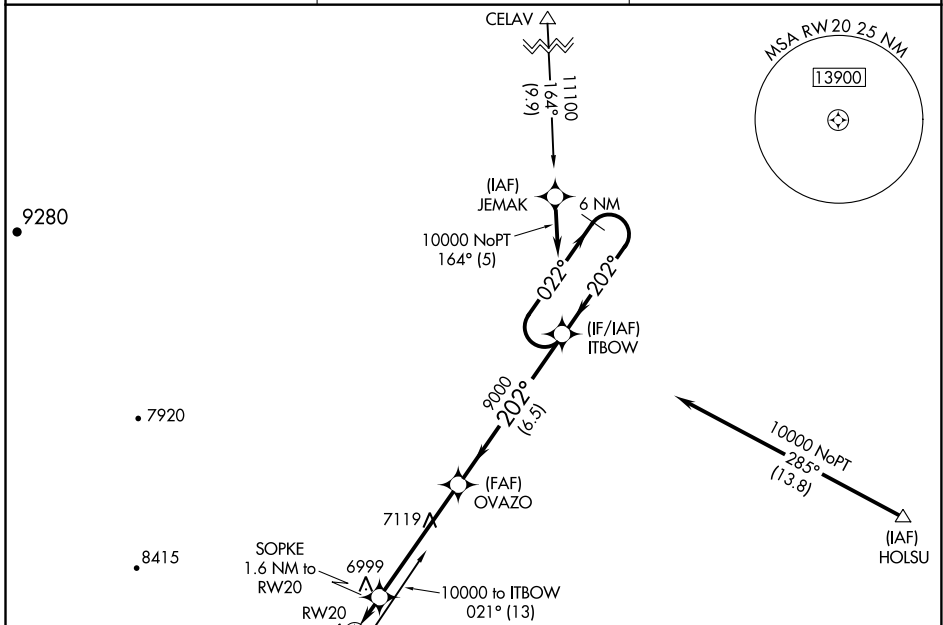
APP CRS 202°	Rwy Idg 5006
	TDZE 6867
	Apt Elev 6877

RNAV (GPS) RWY 20

LAS VEGAS MUNI (LVS)

RNP APCH.	ODALS	MISSED APPROACH: Climb to 10000 direct GAVLY and hold.
<p>▼ If local altimeter setting not received, use Santa Fe Muni altimeter setting and increase all MDAs 200 feet.</p> <p>▲ Straight-in minimums NA when using Santa Fe Muni altimeter setting.</p>		

ASOS 118.525	ALBUQUERQUE CENTER 132.8 346.35	UNICOM 122.8 (CTAF) 0
------------------------	---	---------------------------------



SW-1, 25 FEB 2021 to 25 MAR 2021

SW-1, 25 FEB 2021 to 25 MAR 2021

MIRL Rwy 14-32 and 2-20