

LOC I-LWB <b>110.35</b>	APP CRS <b>045°</b>	Rwy Idg <b>7003</b>
		TDZE <b>2288</b>
		Apt Elev <b>2302</b>


# ILS or LOC RWY 4

## GREENBRIER VALLEY (LWB)

RNAV 1-GPS required.  
ADF or DME required for LOC only.

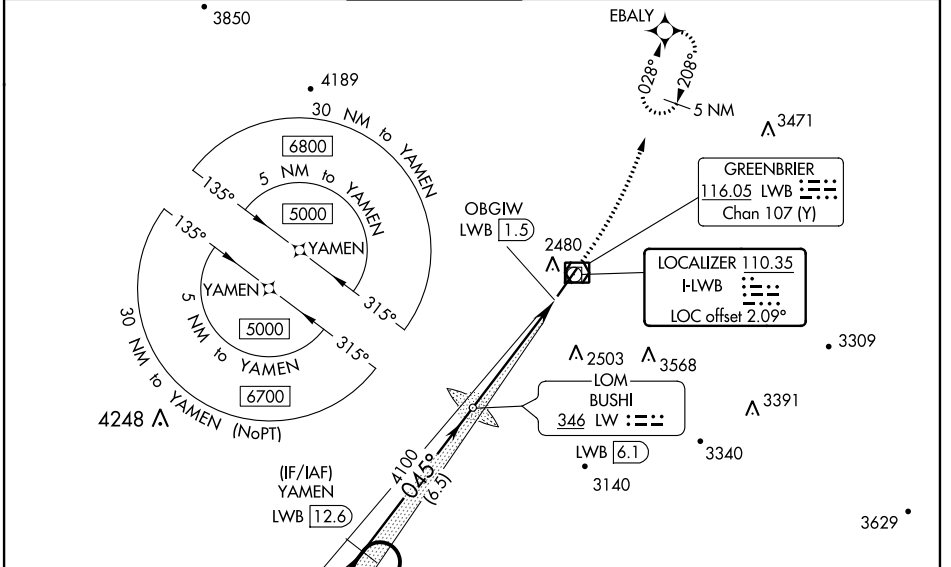
**⚠** Autopilot coupled approach NA below 2700. Rwy 4 helicopter visibility reduction below  $\frac{3}{4}$  SM NA. For inop ALS increase S-ILS 4 all Cats visibility to  $\frac{7}{8}$  SM, increase S-LOC 4 Cats A/B to  $1\frac{1}{8}$  SM.

**MALSR**



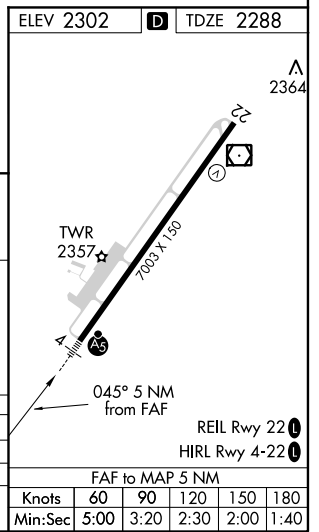
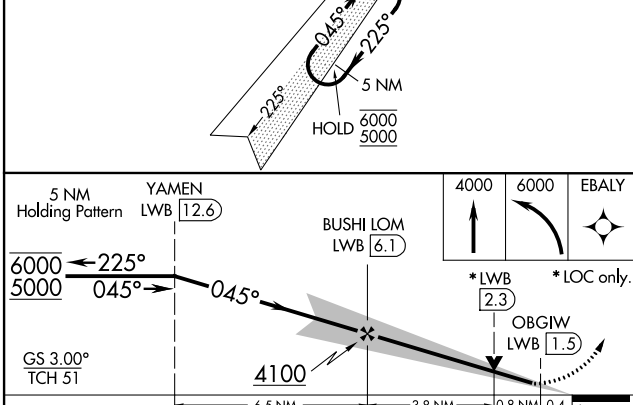
MISSED APPROACH: Climb to 4000 then climbing left turn to 6000 direct EBALY and hold, continue climb-in-hold to 6000.

ATIS ★ <b>121.4</b>	WASHINGTON CENTER <b>134.4 353.9</b>	LEWISBURG TOWER★ <b>118.9 (CTAF) 0</b>	GND CON <b>121.9</b>	CLNC DEL <b>120.85</b> (When tower closed)	UNICOM <b>122.95</b>
------------------------	---	---	-------------------------	--	-------------------------



NE-4, 25 FEB 2021 to 25 MAR 2021

NE-4, 25 FEB 2021 to 25 MAR 2021



CATEGORY	A	B	C	D
S-ILS 4		2559- $\frac{3}{4}$	271 (300- $\frac{3}{4}$ )	
S-LOC 4		2720- $\frac{3}{4}$	432 (500- $\frac{3}{4}$ )	
<b>CIRCLING</b>	2840-1 538 (600-1)	3040-1 738 (800-1)	3280-3 978 (1000-3)	3680-3 1378 (1400-3)