

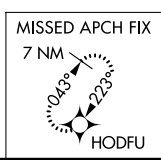
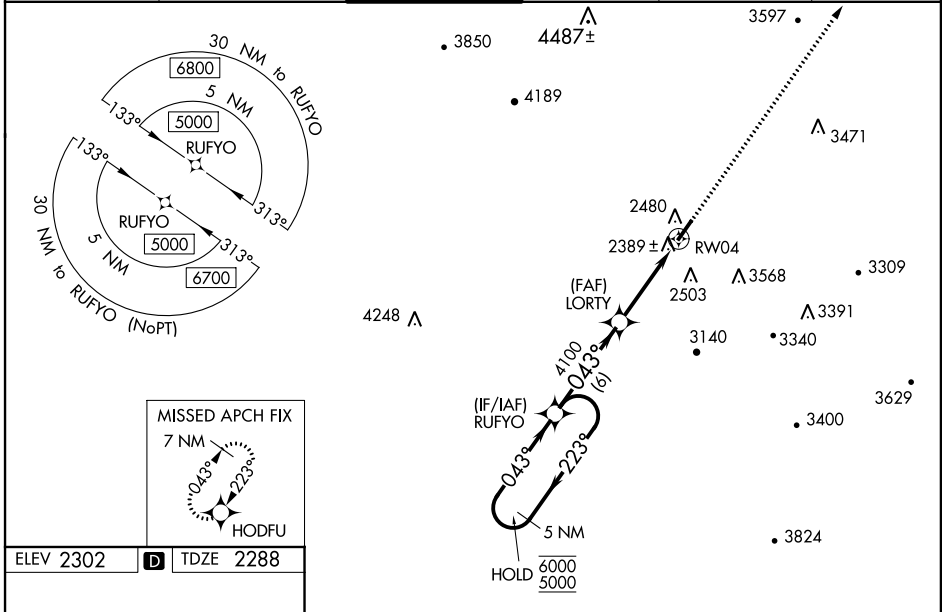
WAAS CH 42613 W04A	APP CRS 043°	Rwy Idg TDZE Apt Elev	7003 2288 2302
----------------------------------------	------------------------	-----------------------------	-------------------------------------------

RNAV (GPS) RWY 4

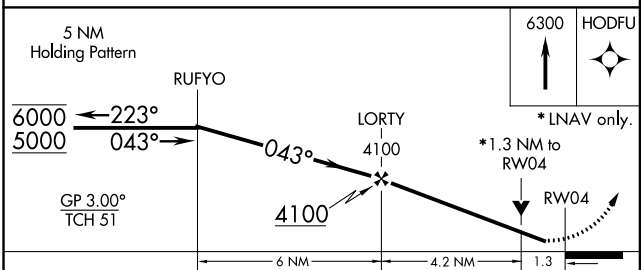
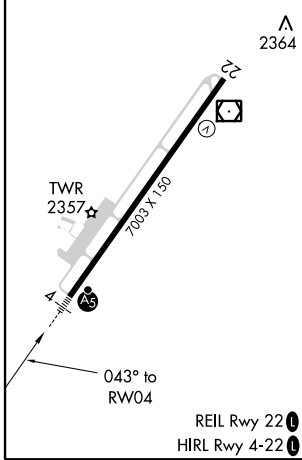
GREENBRIER VALLEY (LWB)

RNP APCH.			MISSED APPROACH: Climb to 6300 direct HODFU and hold, continue climb-in-hold to 6300.
	Rwy 4 helicopter visibility reduction below 3/4 NA. For uncompensated Baro-VNAV systems, LNAV/VNAV NA below -19°C or above 54°C. For inop ALS, increase LNAV Cats A/B visibilities to 1 SM, Cats C/D to 1/2 SM, and increase LPV all Cats visibilities to 3/8 SM.		

ATIS★ 121.4	WASHINGTON CENTER 134.4 353.9	LEWISBURG TOWER★ 118.9 (CTAF) 0	GND CON 121.9	CLNC DEL 120.85 (When tower closed)	UNICOM 122.95
-----------------------	-----------------------------------------	-------------------------------------------	-------------------------	--------------------------------------------------	-------------------------



ELEV 2302	D	TDZE 2288
-----------	----------	-----------



CATEGORY	A	B	C	D
LPV DA		2559-3/4	271 (300-3/4)	
LNAV/VNAV DA		2738-7/8	450 (500-7/8)	
LNAV MDA	2760-3/4	472 (500-3/4)	2760-1	472 (500-1)
CIRCLING	2840-1 538 (600-1)	3040-1 738 (800-1)	3280-3 978 (1000-3)	3680-3 1378 (1400-3)

NE-4, 25 FEB 2021 to 25 MAR 2021

NE-4, 25 FEB 2021 to 25 MAR 2021