

APP CRS	Rwy Idg	4750
297°	TDZE	1442
	Apt Elev	1442

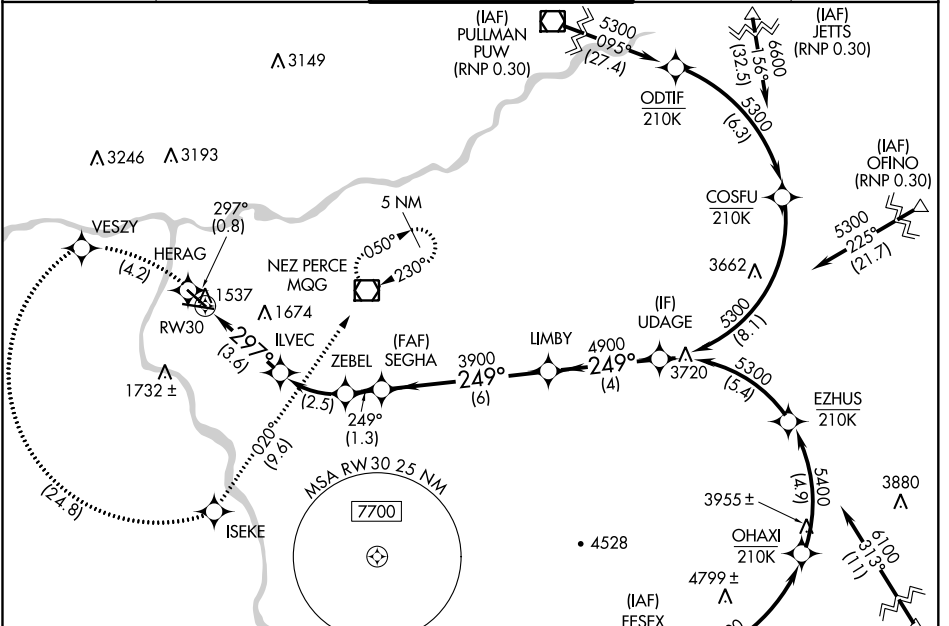
RNAV (RNP) RWY 30

LEWISTON-NEZ PERCE COUNTY (LWS)

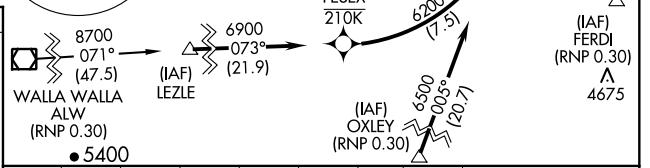
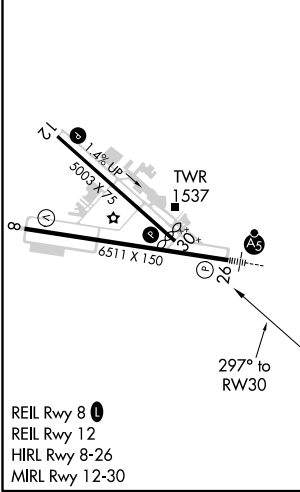
GPS and RF Required. For uncompensated Baro-VNAV systems, procedure NA below -16°C (4°F) or above 46°C (114°F). Missed approach requires RNP less than RNP 1.00.

MISSED APPROACH: Climb to 6000 on track 297° to HERAG, left turn to VESZY, left turn to ISEKE and on track 020° to MGG VOR/DME and hold.

ASOS 135.575	SEATTLE CENTER 123.95 290.55	LEWISTON TOWER ★ 119.4 (CTAF) 318.8	GND CON 121.9	UNICOM 122.95
------------------------	--	---	-------------------------	-------------------------



ELEV 1442	D TDZE 1442
------------------	---------------------------



6000	HERAG	VESZY	ISEKE	MGG	UDAGE
↑	tr 297°			tr 020°	Procedure Turn NA
	ILVEC	ZEBEL	SEGHA	LIMBY	
	2646	3468	3900	4900	5300
	RW30				
	297°		249°		
	3900				
	3.6 NM	2.5 NM	1.3 NM	6 NM	4 NM
					GP 3.00° TCH 47

CATEGORY	A	B	C	D
RNP 0.30 DA		1778-1/8	336 (400-1/8)	

AUTHORIZATION REQUIRED

NW-1, 25 FEB 2021 to 25 MAR 2021

NW-1, 25 FEB 2021 to 25 MAR 2021