

APP CRS	Rwy Idg	<b>4750</b>
<b>117°</b>	TDZE	<b>1415</b>
	Apt Elev	<b>1442</b>

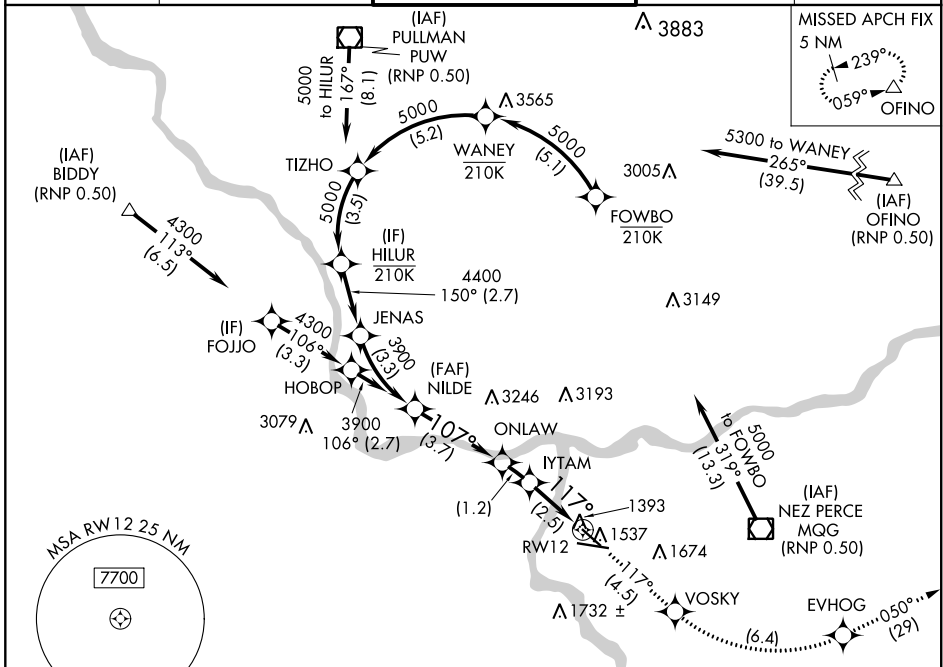
# RNAV (RNP) Z RWY 12

LEWISTON-NEZ PERCE COUNTY (LWS)

**GPS and RF Required.** For uncompensated Baro-VNAV systems, procedure NA below -16°C (3°F) or above 36°C (98°F). Procedure NA at night.  
 \* Missed approach requires minimum climb of 260 feet per NM to 3400.

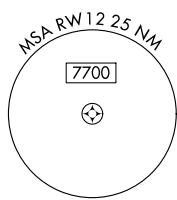
**MISSED APPROACH:** Climb to 6000 via track 117° to VOSKY and via left turn to EVHOG and via track 050° to OFINO and hold.

ASOS <b>135.575</b>	SEATTLE CENTER <b>123.95 290.55</b>	LEWISTON TOWER ★ <b>119.4 (CTAF) 0 318.8</b>	GND CON <b>121.9</b>	UNICOM <b>122.95</b>
------------------------	--	---	-------------------------	-------------------------



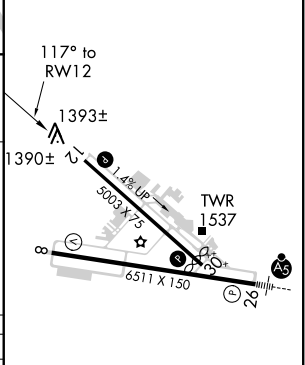
NW-1, 25 FEB 2021 to 25 MAR 2021

NW-1, 25 FEB 2021 to 25 MAR 2021



ELEV 1442	<b>D</b> TDZE 1415
-----------	--------------------

Procedure Turn NA	NILDE	6000	VOSKY	EVHOG	tr 050°	OFINO
	3900	tr 117°				
GP 3.10°	3900	ONLAW	IYTAM	RW12	VGSi and RNAV glidepath not coincident (VGSi Angle 3.00/TCH 40).	
TCH 56	107°	2659	2254	117°		
	3.7 NM	1.2	2.5 NM			
CATEGORY	A	B	C	D		
RNP 0.30 DA*	1683-1		268 (300-1)			
RNP 0.30 DA	1887-1¼		472 (500-1¼)			



REIL Rwy 8 **1**  
 REIL Rwy 12  
 HIRL Rwy 8-26  
 MIRL Rwy 12-30

## AUTHORIZATION REQUIRED