

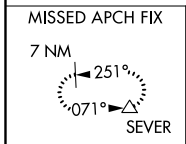
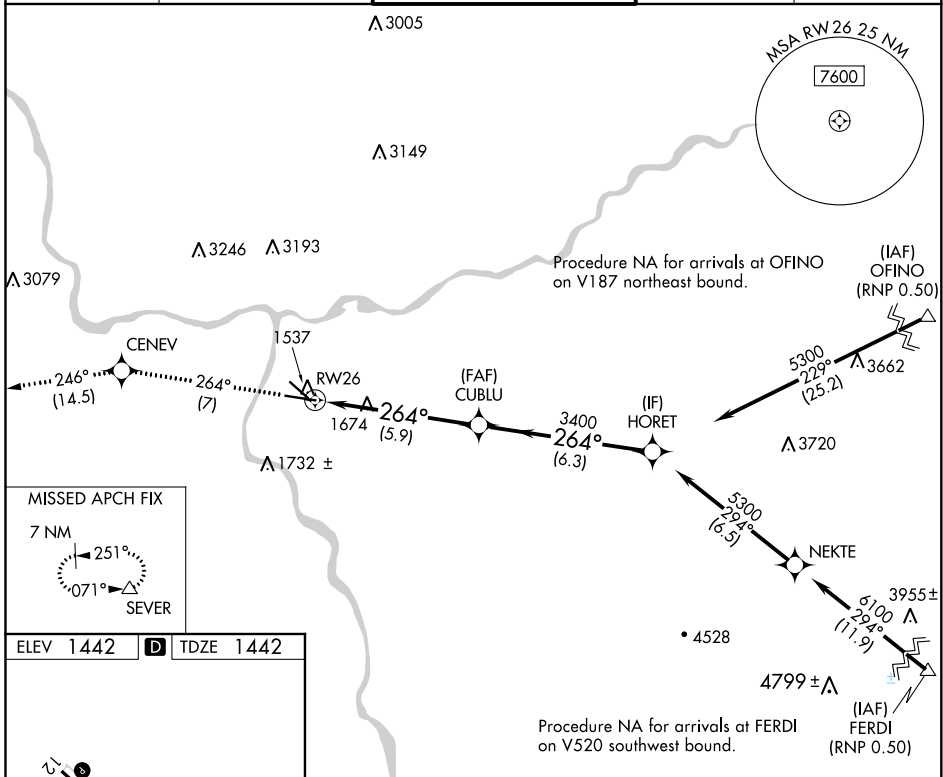
APP CRS <b>264°</b>	Rwy Idg <b>6511</b>
	TDZE <b>1442</b>
	Apt Elev <b>1442</b>

# RNAV (RNP) Z RWY 26

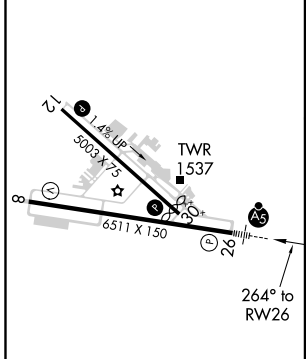
LEWISTON-NEZ PERCE COUNTY (LWS)

<p><b>▽</b> For uncompensated Baro-VNAV systems, procedure NA below -16°C (3°F) or above 46°C (115°F). GPS required. For inoperative MALS, increase RNP 0.30 visibility all Cats to 1½ miles.</p>	<p><b>MALS</b></p>	<p><b>MISSED APPROACH:</b> Climb to 7000 on track 264° to CENEV and on track 246° to SEVER and hold, continue climb-in-hold to 7000.</p>
---	--------------------	--

ASOS <b>135.575</b>	SEATTLE CENTER <b>123.95 290.55</b>	LEWISTON TOWER ★ <b>119.4 (CTAF) 318.8</b>	GND CON <b>121.9</b>	UNICOM <b>122.95</b>
------------------------	--	---	-------------------------	-------------------------



ELEV 1442	<b>D</b>	TDZE 1442
-----------	----------	-----------



7000	CENEV	tr 246°	SEVER	VGSI and RNAV glidepath not coincident (VGSI Angle 3.00/TCH 51).	HORET
tr 264°					
	CUBLU	3400		5300	
	RW26	3400			GP 3.00° TCH 51
		5.9 NM	6.3 NM		
CATEGORY	A	B	C	D	

RNP 0.20 DA	1806-¾	364 (400-¾)
RNP 0.30 DA	2003-1½	561 (600-1½)

**AUTHORIZATION REQUIRED**

NW-1, 25 FEB 2021 to 25 MAR 2021

NW-1, 25 FEB 2021 to 25 MAR 2021