

RNAV (RNP) Z RWY 8

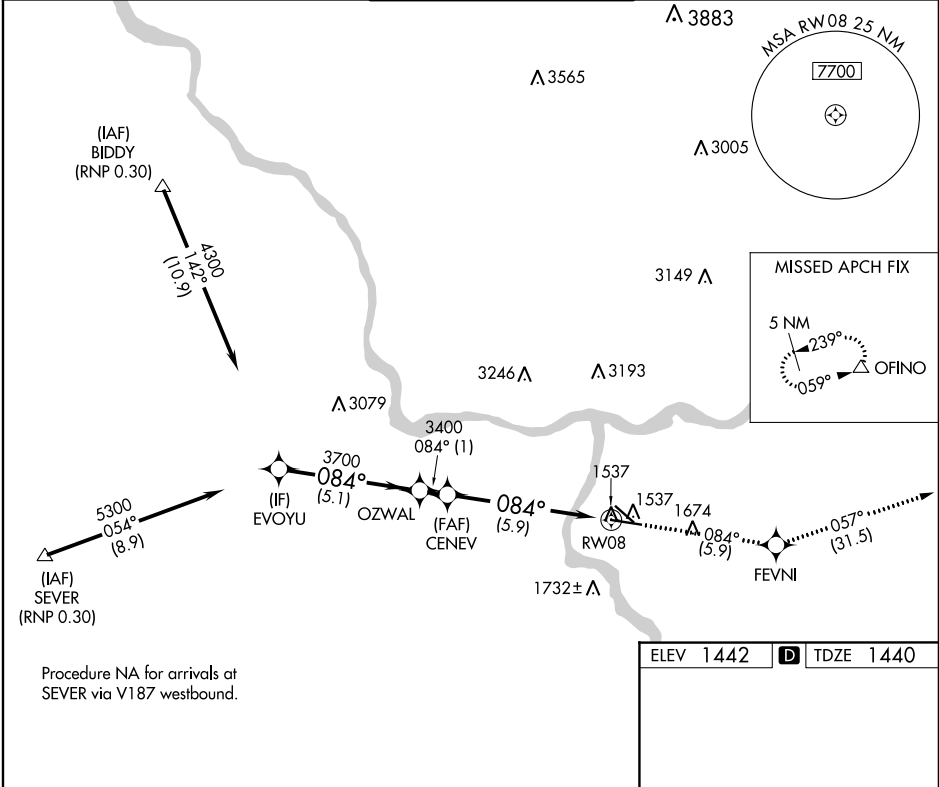
LEWISTON-NEZ PERCE COUNTY (LWS)

APP CRS	Rwy Idg	6511
084°	TDZE	1440
	Apt Elev	1442

GPS required. For uncompensated Baro-VNAV systems, procedure NA below -16°C (3°F) or above 46°C (115°F). When VGSI inop, procedure NA at night.

MISSED APPROACH: Climb to 6000 via track 084° to FEVNI and via track 057° to OFINO and hold.

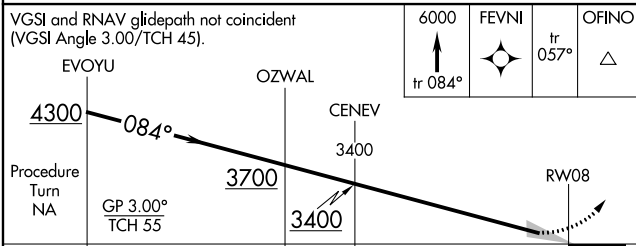
ASOS 135.575	SEATTLE CENTER 123.95 290.55	LEWISTON TOWER ★ 119.4 (CTAF) 0 318.8	GND CON 121.9	UNICOM 122.95
------------------------	--	---	-------------------------	-------------------------



NW-1, 25 FEB 2021 to 25 MAR 2021

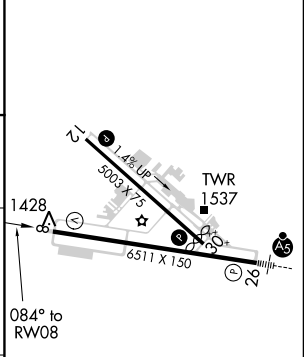
NW-1, 25 FEB 2021 to 25 MAR 2021

Procedure NA for arrivals at SEVER via V187 westbound.



VGSI and RNAV glidepath not coincident (VGSI Angle 3.00°/TCH 45).	6000 ↑ tr 084°	FEVNI ★	tr 057°	OFINO △
EVOYU	OZWAL	CENEV	RWY 8	
4300	3700	3400		
Procedure Turn NA				
GP 3.00° TCH 55'				
5.1 NM 1.0 NM 5.9 NM				

ELEV 1442	D TDZE 1440
-----------	--------------------



CATEGORY	A	B	C	D
RNP 0.30 DA	1752-1 312 (400-1)			

AUTHORIZATION REQUIRED

- REIL Rwy 8 **1**
- REIL Rwy 12
- HIRL Rwy 8-26
- MIRL Rwy 12-30

RNAV (RNP) Z RWY 8