

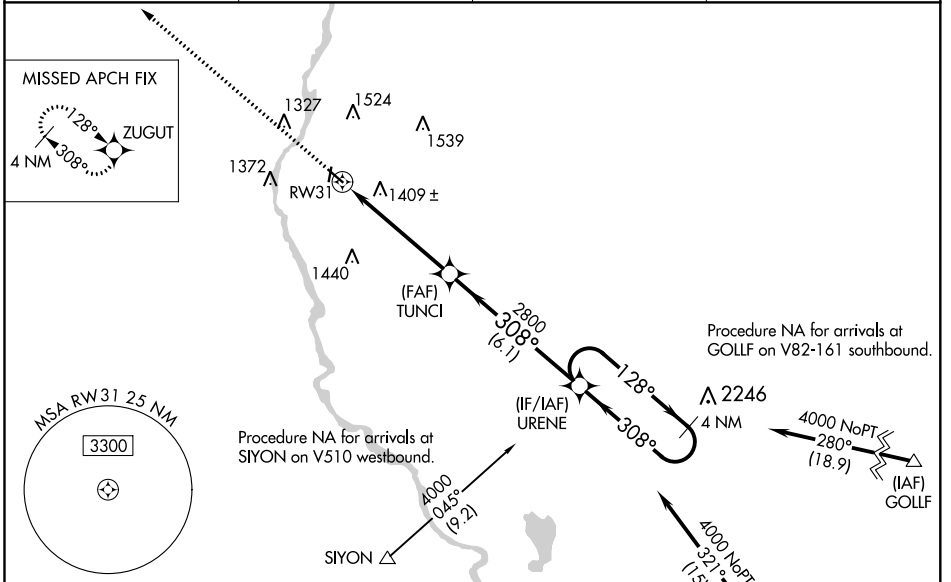
WAAS CH 93920 W31A	APP CRS 308°	Rwy Idg TDZE Apt Elev	4010 1123 1123
--	------------------------	-----------------------------	---

RNAV (GPS) RWY 31

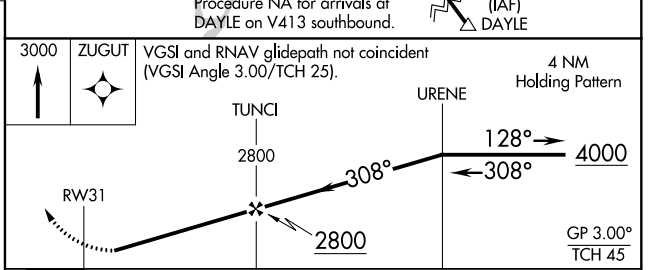
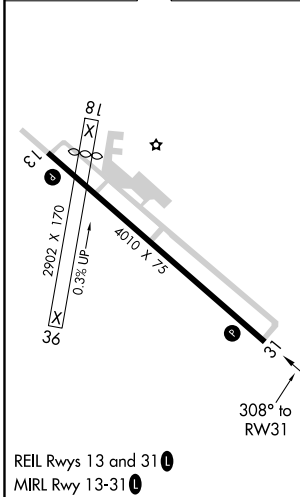
LITTLE FALLS/MORRISON COUNTY-LINDBERGH FIELD (L.X.L.)

RNP APCH.	<p>⚠ Baro-VNAV NA when using St Cloud altimeter setting. For uncompensated Baro-VNAV systems, LNAV/VNAV NA below -17°C or above 32°C. Rwy 31 visibility reduction below ¼ SM by helicopters NA. When local altimeter setting not received use St Cloud altimeter setting and increase all DA 76 feet and all MDA 80 feet, increase LPV all Cats and Circling Cat C visibility ½ mile and LNAV/VNAV all Cats, LNAV Cats C/D, and Circling Cat D ¼ mile. Circling Rwy 18, 36 NA.</p>	MISSED APPROACH: Climb to 3000 direct ZUGUT and hold.
-----------	---	--

AWOS-3 119.45	MINNEAPOLIS CENTER 118.05 239.0	GCO 121.725	UNICOM 122.8 (CTAF) 0
-------------------------	---	-----------------------	---------------------------------



ELEV 1123	TDZE 1123
-----------	-----------



CATEGORY	A	B	C	D
LPV DA		1517-1 ³ / ₈	394 (400-1 ³ / ₈)	
LNAV/VNAV DA		1749-2 ¹ / ₄	626 (700-2 ¹ / ₄)	
LNAV MDA	1660-1	537 (600-1)	1660-1 ¹ / ₂	537 (600-1 ¹ / ₂)
CIRCLING	1700-1 577 (600-1)	1720-1 597 (600-1)	1720-1 ¹ / ₂ 597 (600-1 ¹ / ₂)	2000-2 ³ / ₄ 877 (900-2 ³ / ₄)

RNAV (GPS) RWY 31

NC-1, 25 FEB 2021 to 25 MAR 2021

NC-1, 25 FEB 2021 to 25 MAR 2021