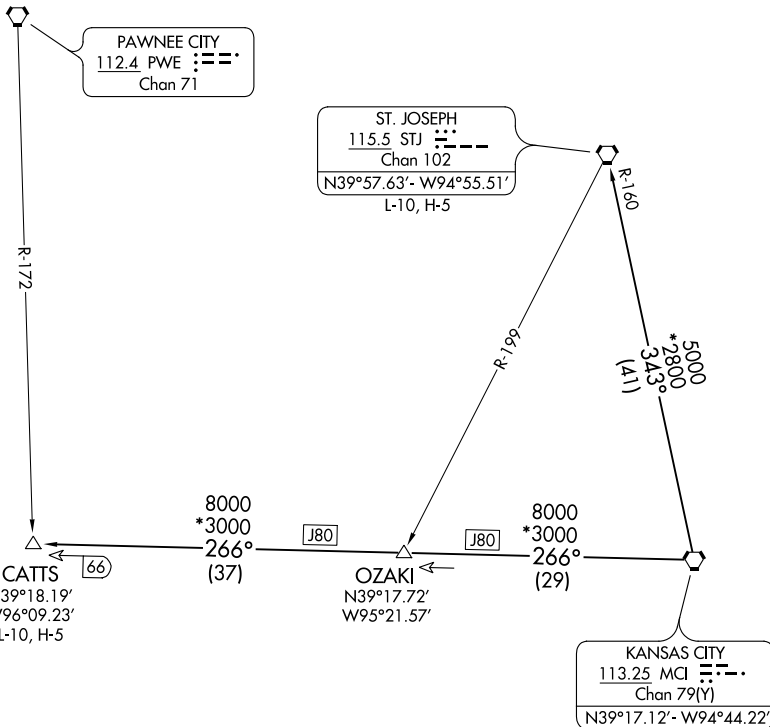


CLNC DEL

118.45

KANSAS CITY DEP CON

118.4 307.35



NC-3, 25 FEB 2021 to 25 MAR 2021

NC-3, 25 FEB 2021 to 25 MAR 2021

NOTE: RADAR required.

### TAKEOFF MINIMUMS

Rwys 11, 18, 29, 36: Standard.

NOTE: Chart not to scale



### DEPARTURE ROUTE DESCRIPTION

TAKEOFF ALL RUNWAYS: Climb on assigned heading for RADAR vectors to appropriate route. Expect filed altitude 10 minutes after departure.

CATTS TRANSITION (CHIEF7.CATTS): From over MCI VORTAC on MCI R-266 to CATTS INT.

ST. JOSEPH TRANSITION (CHIEF7.STJ): From over MCI VORTAC on MCI R-343 and STJ R-160 to STJ VORTAC.