

WAAS CH 99405 W11A	APP CRS 111°	Rwy Idg TDZE 1004 Apr Elev 1004	4000
--	------------------------	---	-------------

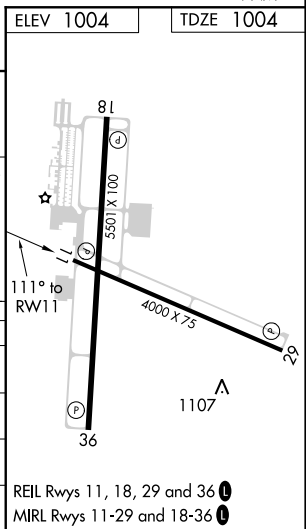
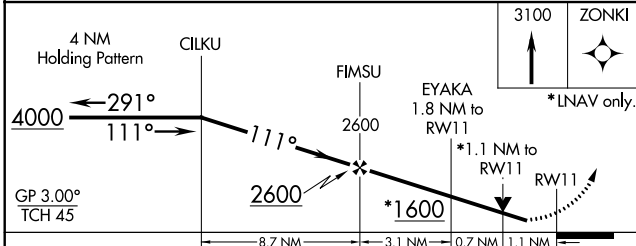
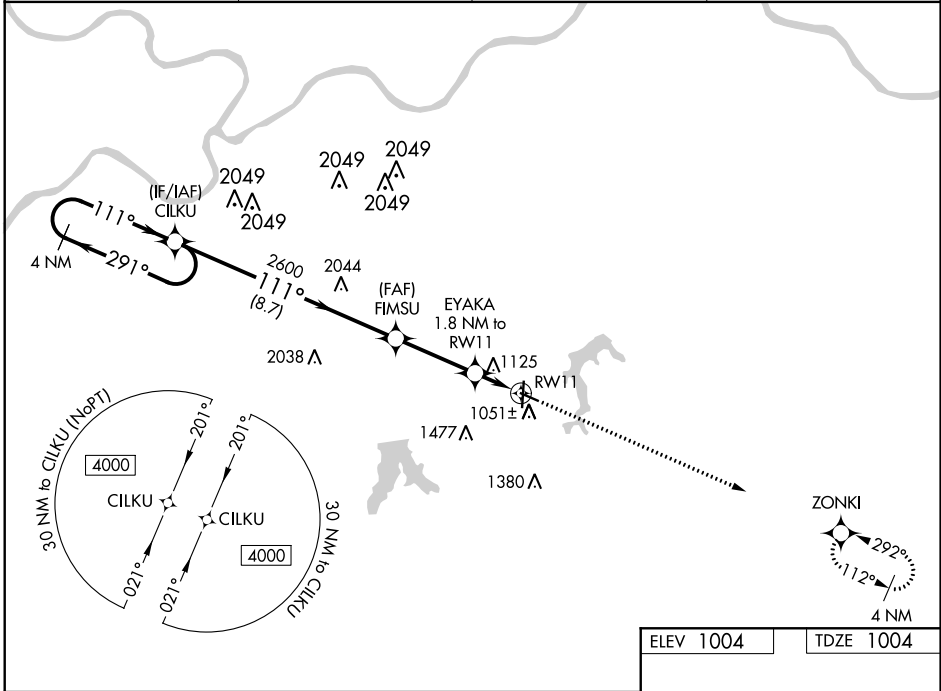
RNAV (GPS) RWY 11

LEE'S SUMMIT MUNI (LXT)

▼ For uncompensated Baro-VNAV systems, LNAV/VNAV NA below -17°C (2°F) or above 54°C (130°F). Rwy 11 helicopter visibility reduction below ¾ SM NA. DME/DME RNP-0.3 NA.

MISSED APPROACH: Climb to 3100 direct ZONKI and hold.

ASOS 124.175	KANSAS CITY APP CON 118.4 307.35	CLNC DEL 118.45	UNICOM 122.8 (CTAF) 0
------------------------	--	---------------------------	--



CATEGORY	A	B	C	D
LPV DA		1254-7/8	250 (300-7/8)	
LNAV/VNAV DA		1381-1¼	377 (400-1¼)	
LNAV MDA		1380-1	376 (400-1)	
C CIRCLING	1440-1 436 (500-1)	1540-1 536 (600-1)	1780-2¼ 776 (800-2¼)	1780-2½ 776 (800-2½)

NC-3, 25 FEB 2021 to 25 MAR 2021

NC-3, 25 FEB 2021 to 25 MAR 2021