

WAAS CH <b>48905</b> <b>W29A</b>	APP CRS <b>291°</b>	Rwy Ldg TDZE Apt Elev	<b>4000</b> <b>1004</b> <b>1004</b>
--	------------------------	-----------------------------	---

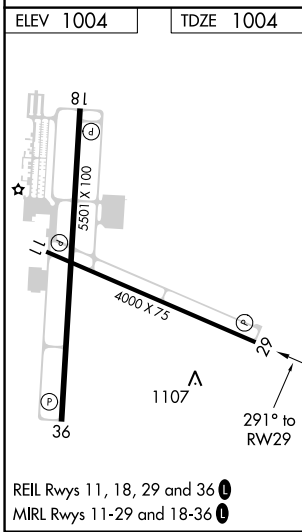
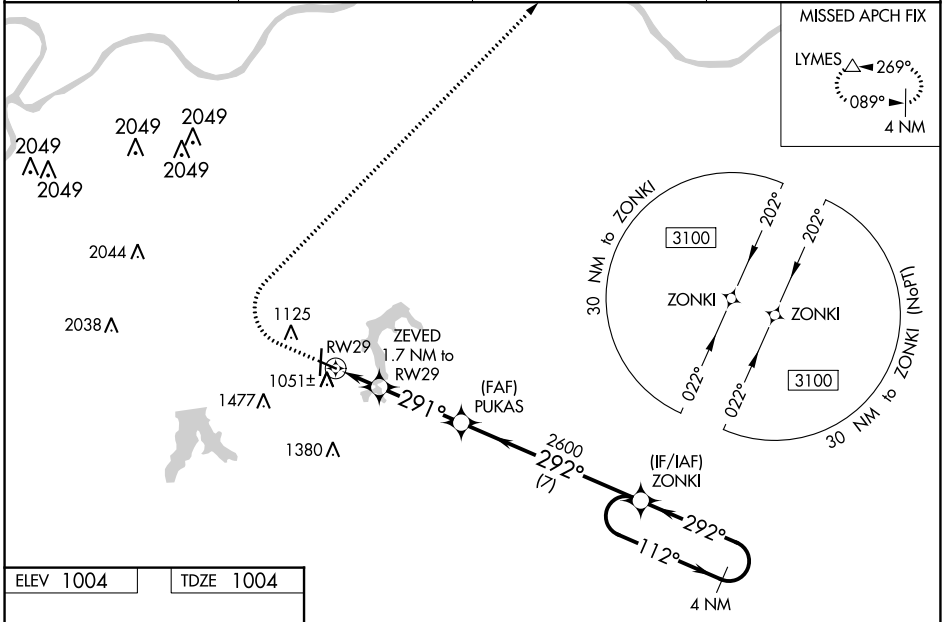
# RNAV (GPS) RWY 29

LEE'S SUMMIT MUNI (LXT)

**⚠** For uncompensated Baro-VNAV systems, LNAV/VNAV NA below -17°C (2°F) or above 54°C (130°F). DME/DME RNP-0.3 NA. VDP and Baro-VNAV NA when using Charles B. Wheeler Downtown altimeter setting. When local altimeter setting not received, use Charles B. Wheeler Downtown altimeter setting: increase LPV DA to 1322 feet and all visibilities 1/8 SM; increase LNAV/VNAV DA to 1359 feet and all visibilities 1/8 SM; increase all MDA 80 feet and visibility Cats C and D 1/4 SM.

MISSED APPROACH: Climb to 1500 then climbing right turn to 3000 direct LYMES and hold.

ASOS <b>124,175</b>	KANSAS CITY APP CON <b>118,4 307,35</b>	CLNC DEL <b>118,45</b>	UNICOM <b>122,8 (CTAF) 0</b>
------------------------	--	---------------------------	---------------------------------



1500	3000	LYMES				
* LNAV only		ZEVED 1.7 NM to RW29	PUKAS 2600	ZONKI	4 NM Holding Pattern	
* 1 NM to RW29		1580*	292°	112°	3100	
-1 NM		0.7 NM	3.2 NM	7 NM	GP 3.00° TCH 40	
CATEGORY	A	B	C	D		
LPV DA		1254-3/4	250 (300-3/4)			
LNAV/VNAV DA		1291-7/8	287 (300-7/8)			
LNAV MDA		1360-1	356 (400-1)			
<b>CIRCLING</b>	1440-1 436 (500-1)	1540-1 536 (600-1)	1780-2 1/4 776 (800-2 1/4)	1780-2 1/2 776 (800-2 1/2)		

NC-3, 25 FEB 2021 to 25 MAR 2021

NC-3, 25 FEB 2021 to 25 MAR 2021