

CLNC DEL
118.45
KANSAS CITY DEP CON
118.4 307.35

ST JOSEPH
115.5 STJ ---
Chan 102

KANSAS CITY
113.25 MCI ---
Chan 79(Y)
N39°17.12' W94°44.22'

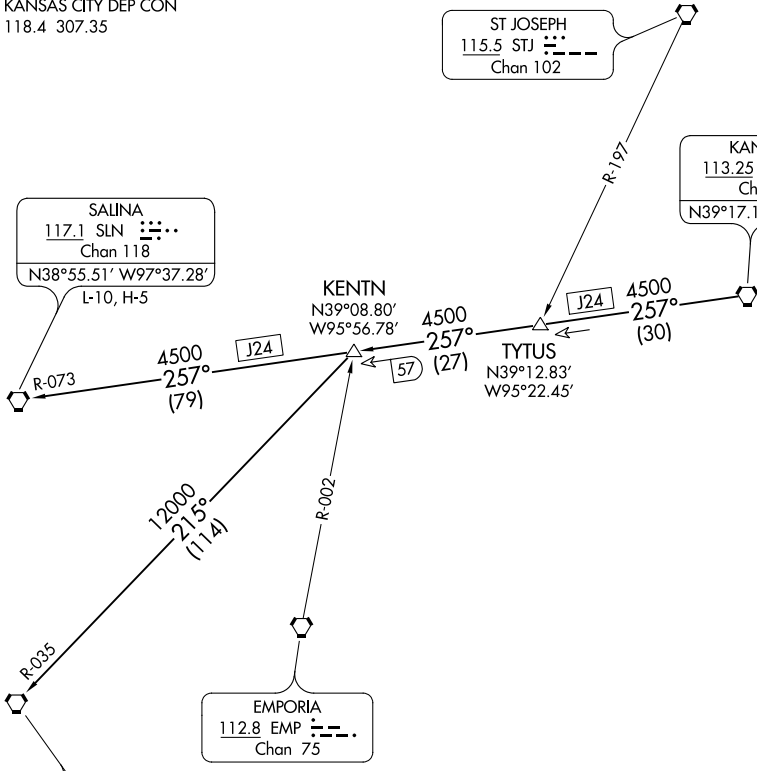
SALINA
117.1 SLN ---
Chan 118
N38°55.51' W97°37.28'
L-10, H-5

KENTN
N39°08.80'
W95°56.78'

TYTUS
N39°12.83'
W95°22.45'

EMPORIA
112.8 EMP ---
Chan 75

WICHITA
113.8 ICT ---
Chan 85
N37°44.72' W97°35.03'
L-10-15, H-5



NC-3, 25 FEB 2021 to 25 MAR 2021

NC-3, 25 FEB 2021 to 25 MAR 2021

NOTE: RADAR required.

TAKEOFF MINIMUMS
Rwys 11, 18, 29, 36: Standard.

NOTE: Chart not to scale.

DEPARTURE ROUTE DESCRIPTION

TAKEOFF ALL RUNWAYS: Climb on assigned heading for RADAR vectors to appropriate route. Expect filed altitude 10 minutes after departure.

KENTN TRANSITION (WLDCT5.KENTN): From over MCI VORTAC on MCI R-257 to KENTN.

SALINA TRANSITION (WLDCT5.SLN): From over MCI VORTAC on MCI R-257 and SLN R-073 to SLN VORTAC.

WICHITA TRANSITION (WLDCT5.ICT): From over MCI VORTAC on MCI R-257 to KENTN, then on ICT R-035 to ICT VORTAC.