

WAAS CH 99339 W17A	APP CRS 174°	Rwy ldg TDZE Apt Elev	4401 1692 1692
--	------------------------	-----------------------------	---

RNAV (GPS) RWY 17

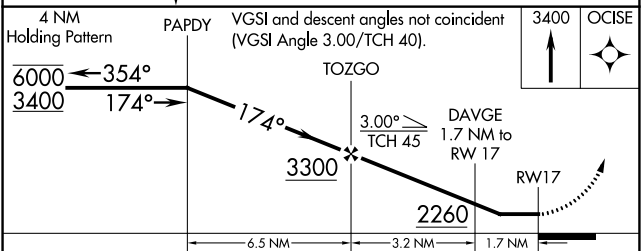
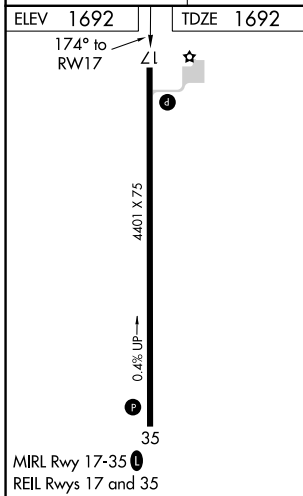
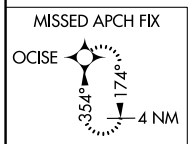
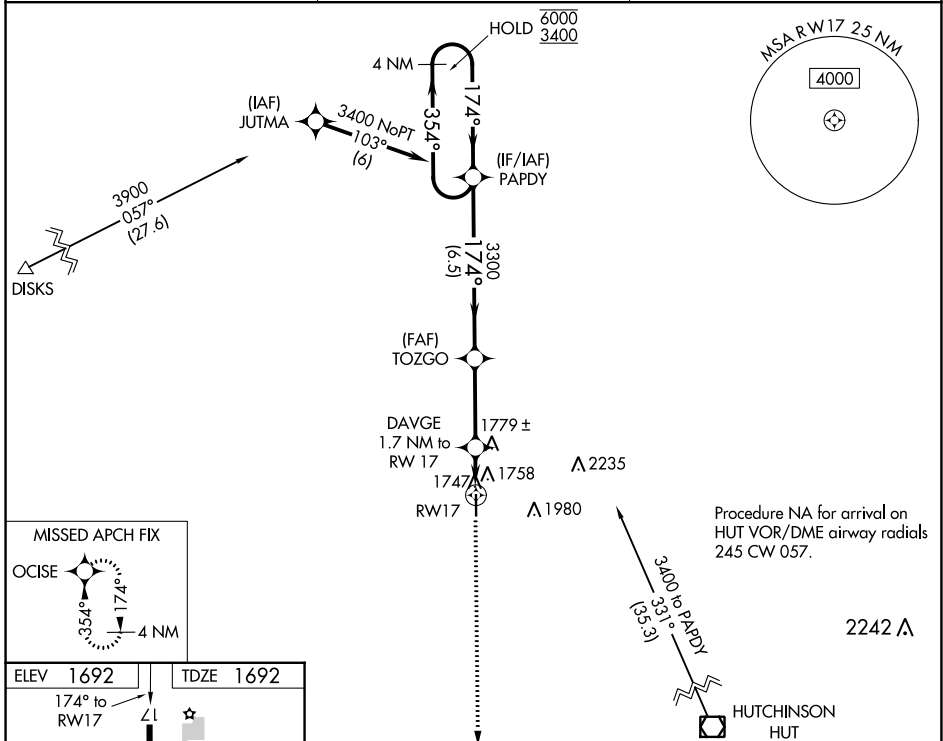
LYONS-RICE COUNTY MUNI (L.Y.O)

RNP APCH.

▼ Rwy 17 helicopter visibility reduction below 1 SM NA.
 ▲ Straight-in/Circling Rwy 17 NA at night.
 When local altimeter setting not received, use Hutchinson altimeter setting.

MISSED APPROACH: Climb to 3400 direct OCISE and hold.

AWOS-3P 119.925	KANSAS CITY CENTER 118.8 322.425	UNICOM 122.8 (CTAF) 0
---------------------------	--	---------------------------------



CATEGORY	A	B	C	D
LP MDA	2080-1	388 (400-1)		NA
LNAV MDA	2120-1	428 (500-1)		NA
C CIRCLING	2260-1	568 (600-1)		NA

NC-2, 25 FEB 2021 to 25 MAR 2021

NC-2, 25 FEB 2021 to 25 MAR 2021