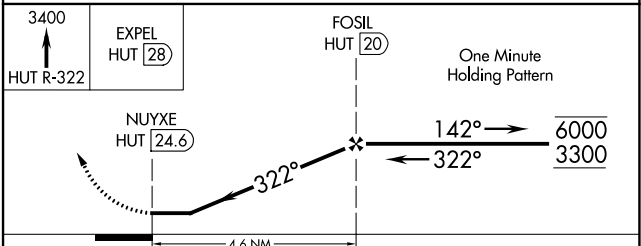
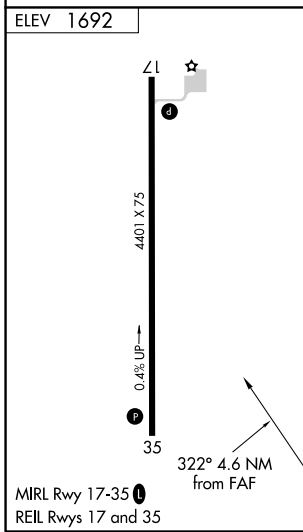
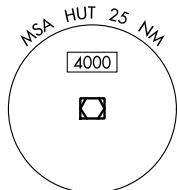
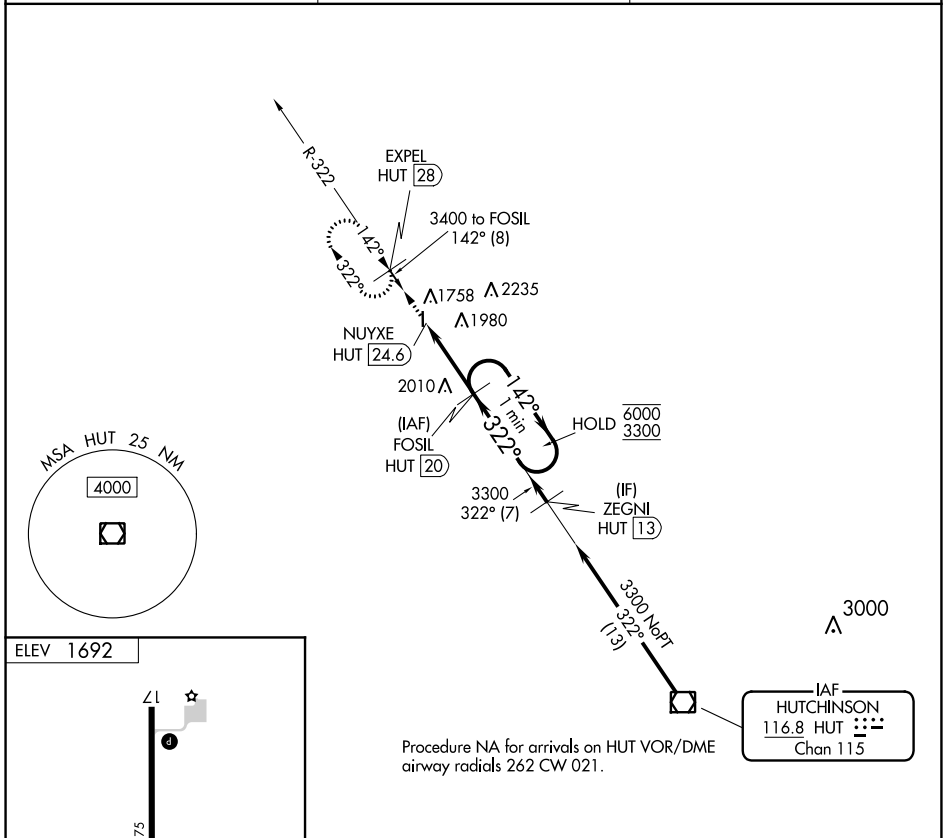


VOR/DME HUT <b>116.8</b> Chan <b>115</b>	APP CRS <b>322°</b>	Rwy Idg TDZE Apt Elev	<b>N/A</b> <b>N/A</b> <b>1692</b>
--	------------------------	-----------------------------	---

**VOR-A**  
LYONS-RICE COUNTY MUNI (LYO)

DME required.	MISSED APPROACH: Climb to 3400 on HUT VOR/DME R-322 to EXPEL/HUT 28 and hold.
---------------	---

AWOS-3P <b>119.925</b>	KANSAS CITY CENTER <b>118.8 322.425</b>	UNICOM <b>122.8 (CTAF) 0</b>
---------------------------	--	---------------------------------



CATEGORY	A	B	C	D
<input checked="" type="checkbox"/> CIRCLING	2400-1	708 (800-1)	NA	

NC-2, 25 FEB 2021 to 25 MAR 2021

NC-2, 25 FEB 2021 to 25 MAR 2021