

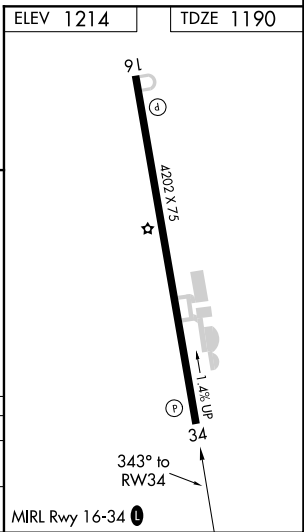
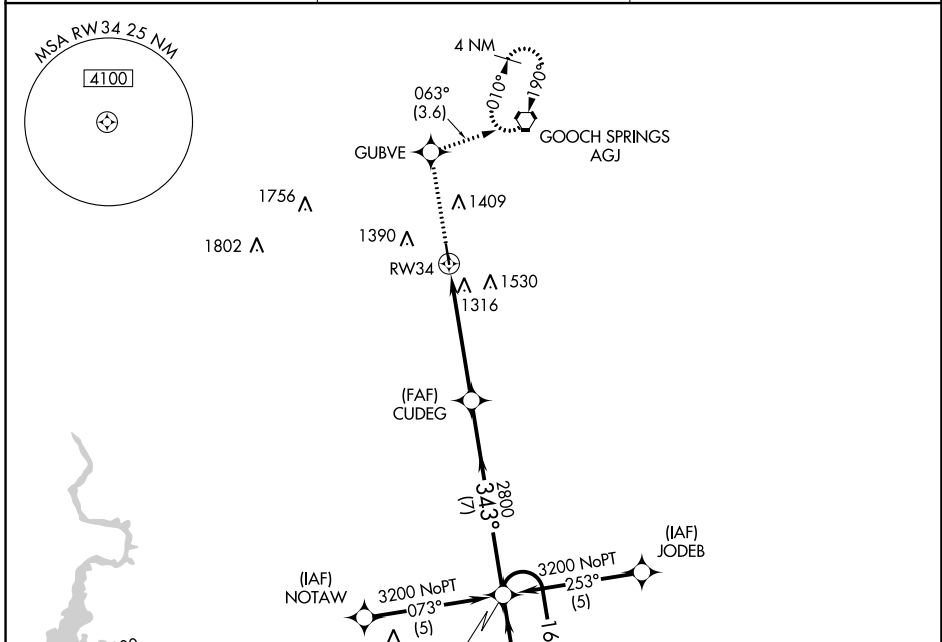
APP CRS <b>343°</b>	Rwy Idg <b>4202</b>
	TDZE <b>1190</b>
	Apt Elev <b>1214</b>

# RNAV (GPS) RWY 34

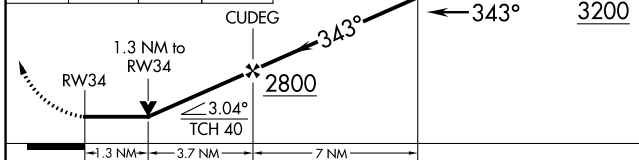
LAMPASAS (LZZ)

RNP APCH. ⚠ Circling Rwy 16 NA at night. Rwy 34 helicopter visibility reduction below 3/4 SM NA.	MISSED APPROACH: Climb to 3000 direct GUBVE and on track 063° to AGJ VORTAC and hold.
--	---

AWOS-3 <b>119.075</b>	GRAY APP CON <b>120.075 323.15</b>	UNICOM <b>122.8 (CTAF) 0</b>
--------------------------	---------------------------------------	---------------------------------



3000	GUBVE	tr 063°	AGJ	HUGOD	4 NM Holding Pattern
					163° → 6000
					← 343° 3200



CATEGORY	A	B	C	D
LNVA MDA	1620-1	430 (500-1)	1620-1¼ 430 (500-1¼)	NA
CIRCLING	1680-1 466 (500-1)	1720-1 506 (600-1)	1720-1½ 506 (600-1½)	NA

SC-3, 25 FEB 2021 to 25 MAR 2021

SC-3, 25 FEB 2021 to 25 MAR 2021