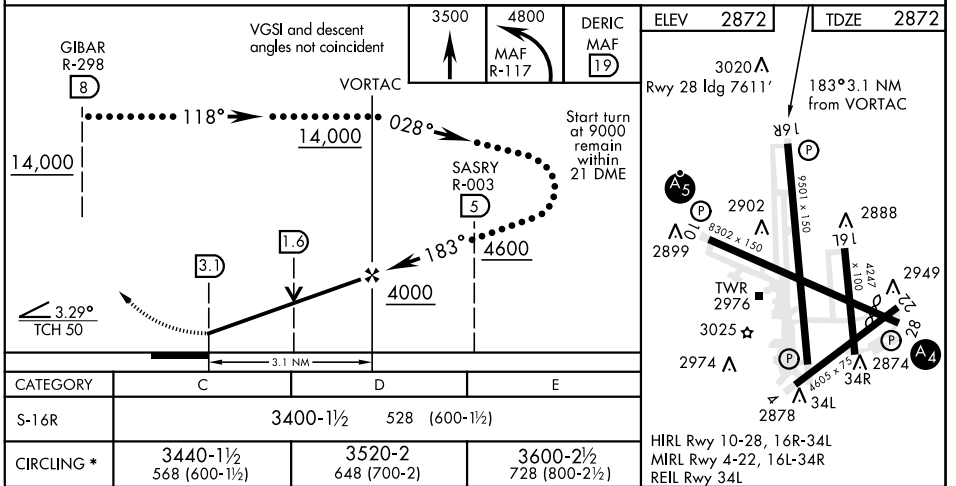
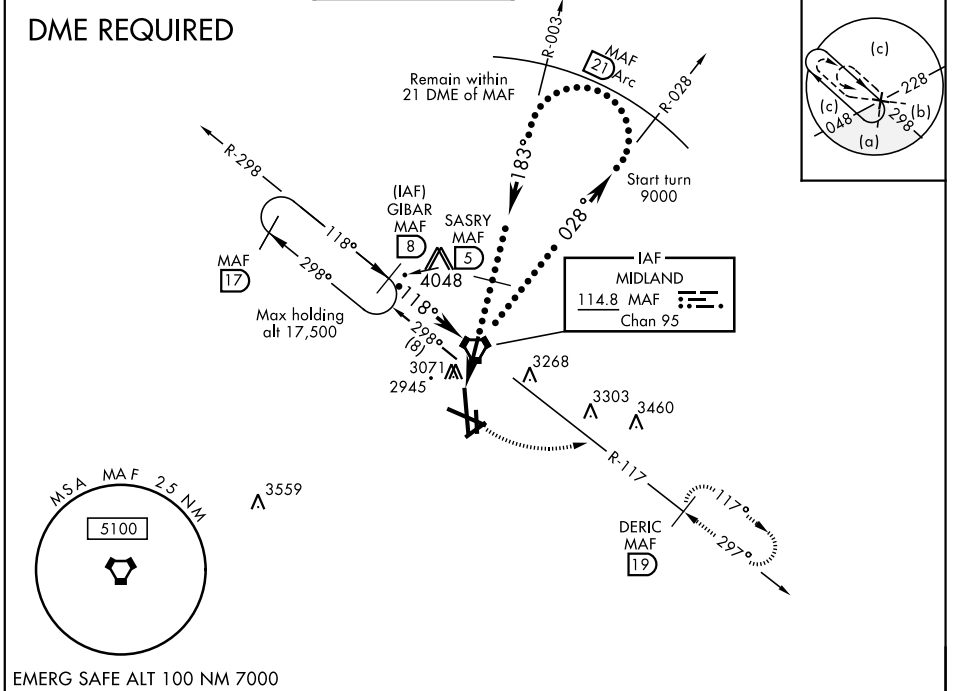


HI-VOR or TACAN RWY 16R

VORTAC MAF 114.8 Chan 95	APCH CRS 183°	Rwy ldg TDZE Arprt Elev 9501 2872 2872	JAL-258 [USAF] MIDLAND INTL AIR AND SPACE PORT (KMAF)
--	-------------------------	--	---

▼ * Circling Rwy 16L NA at night. MISSED APPROACH: Climb to 3500 then climbing left turn to 4800 on MAF VORTAC R-117 to DERIC/MAF 19° DME and hold.

ATIS ★ 126.8 235.975	MIDLAND APP CON 124.6 290.4	MIDLAND TOWER ★ 118.7(CTAF) 273.45	GND CON 121.9 348.6	CLNC DEL 118.05 317.65	UNICOM 122.95	ASR
--------------------------------	---------------------------------------	--	-------------------------------	----------------------------------	-------------------------	-----



HI-VOR or TACAN RWY 16R

SC-3, 25 FEB 2021 to 25 MAR 2021

SC-3, 25 FEB 2021 to 25 MAR 2021