

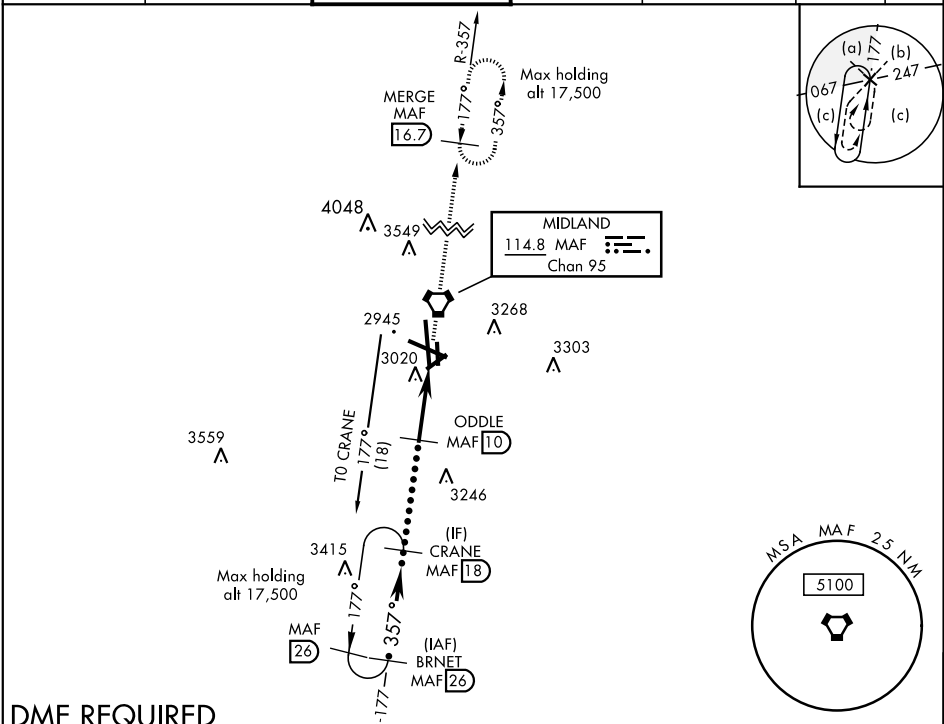
# HI-VOR or TACAN RWY 34L

VORTAC MAF <b>114.8</b> Chan <b>95</b>	APCH CRS <b>357°</b>	Rwy ldg TDZE Arprt Elev <b>9501</b> <b>2858</b> <b>2872</b>
--	-------------------------	--

JAL-258 [USAF] MIDLAND INTL AIR AND SPACE PORT (KMAF)

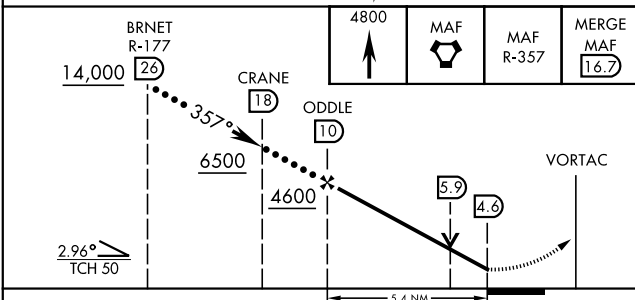
<p>* Circling Rwy 16L NA at night</p>	<p>MISSED APPROACH: Climb to 4800 direct MAF VORTAC and on MAF VORTAC R-357 to MERGE/MAF 16.7 DME and hold.</p>
---------------------------------------	---

<p>ATIS ★ <b>126.8 235.975</b></p>	<p>MIDLAND APP CON <b>124.6 290.4</b></p>	<p>MIDLAND TOWER ★ <b>118.7(CTAF) 0 273.45</b></p>	<p>GND CON <b>121.9 348.6</b></p>	<p>CLNC DEL <b>118.05 317.65</b></p>	<p>UNICOM <b>122.95</b></p>	<p>ASR</p>
--	---	--	---------------------------------------	--	---------------------------------	------------

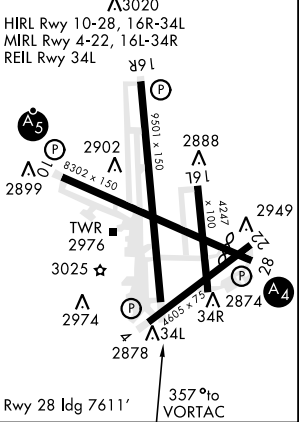


## DME REQUIRED

EMERG SAFE ALT 100 NM 7000



ELEV	2872	TDZE	2858
------	------	------	------



CATEGORY	C	D	E
S-34L	3320-1½	462 (500-1½)	
CIRCLING *	3440-1½ 568 (600-1½)	3520-2 648 (700-2)	3600-2½ 728 (800-2½)

MIDLAND, TEXAS 31° 57' N-102° 12' W MIDLAND INTL AIR AND SPACE PORT (KMAF)

Amtd 3 20JUL17

# HI-VOR or TACAN RWY 34L

SC-3, 25 FEB 2021 to 25 MAR 2021

SC-3, 25 FEB 2021 to 25 MAR 2021