

WAAS CH <b>60933</b> <b>W10A</b>	APP CRS <b>097°</b>	Rwy Idg <b>5501</b> TDZE <b>621</b> Apt Elev <b>621</b>
--	------------------------	---

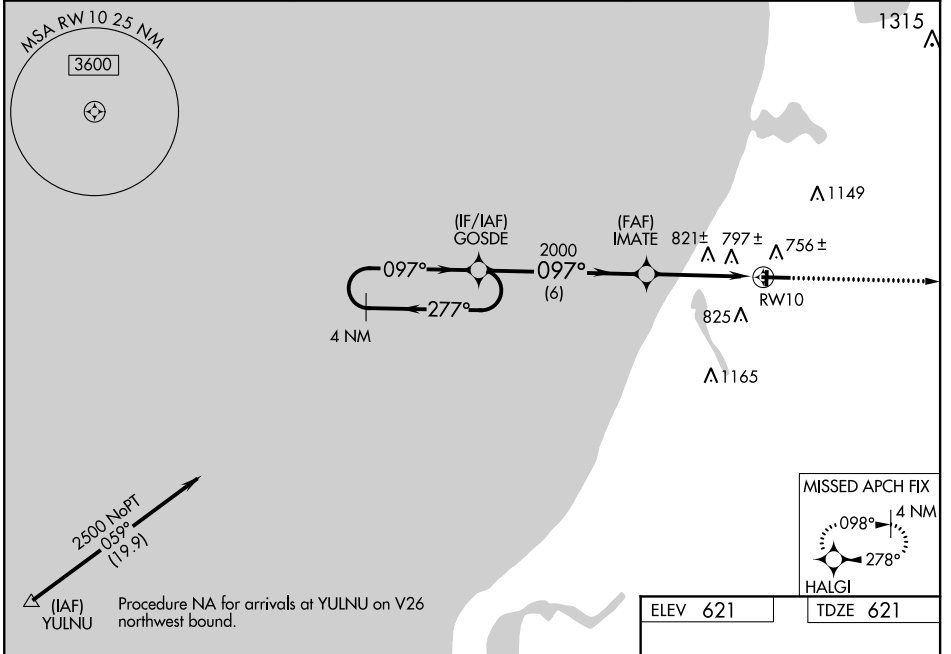
# RNAV (GPS) RWY 10

MANISTEE COUNTY-BLACKER (MBL)

**⚠** Night landing Rwy 1/19 NA. For uncompensated Baro-VNAV systems, LNAV/VNAV NA below -16°C (4°F) or above 54°C (130°F). DME/DME RNP -0.3 NA. Baro-VNAV and VDP NA with Ludington altimeter setting. Helicopter visibility reduction below 3/4 SM not authorized. When local altimeter setting not received, use Ludington altimeter setting and increase all DA 50 feet and all MDA 60 feet. Increase LPV visibility all Cats 1/4 mile, LNAV/VNAV visibility all Cats 1/2 mile. Increase LNAV Cats C/D visibility 1/2 mile, and Circling Cat C visibility 1/4 mile.

**MISSED APPROACH:**  
Climb to 3000 direct HALGI and hold.

AWOS-3PT <b>111.4</b>	MINNEAPOLIS CENTER <b>120.85 322.35</b>	UNICOM <b>122.8 (CTAF) ①</b>
--------------------------	--	---------------------------------



4 NM Holding Pattern

VGSI and RNAV glidepath not coincident (VGSI Angle 3.00/TCH 29).

3000 HALGI

\*LNAV only

2500 ← 277° / 097° →

GOSDE

IMATE

2000

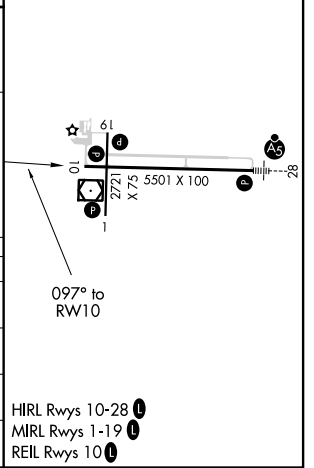
\*1.4 NM to RWY10

RWY10

GP 3.00° TCH 53

6 NM | 2.8 NM | 1.4 NM

CATEGORY	A	B	C	D
LPV DA	871-3/4		250 (300-3/4)	
LNAV/VNAV DA	1091-15/8		470 (500-1 5/8)	
LNAV MDA	1080-1	459 (500-1)	1080-13/8	459 (500-13/8)
CIRCLING	1120-1 499 (500-1)	1160-1 539 (600-1)	1200-1 1/2 579 (600-1 1/2)	1300-2 1/4 679 (700-2 1/4)



EC-1, 25 FEB 2021 to 25 MAR 2021

EC-1, 25 FEB 2021 to 25 MAR 2021