


WAAS CH <b>42532</b> <b>W28A</b>	APP CRS <b>278°</b>	Rwy Idg TDZE Apt Elev	<b>5501</b> <b>621</b> <b>621</b>
--	------------------------	-----------------------------	---

# RNAV (GPS) RWY 28

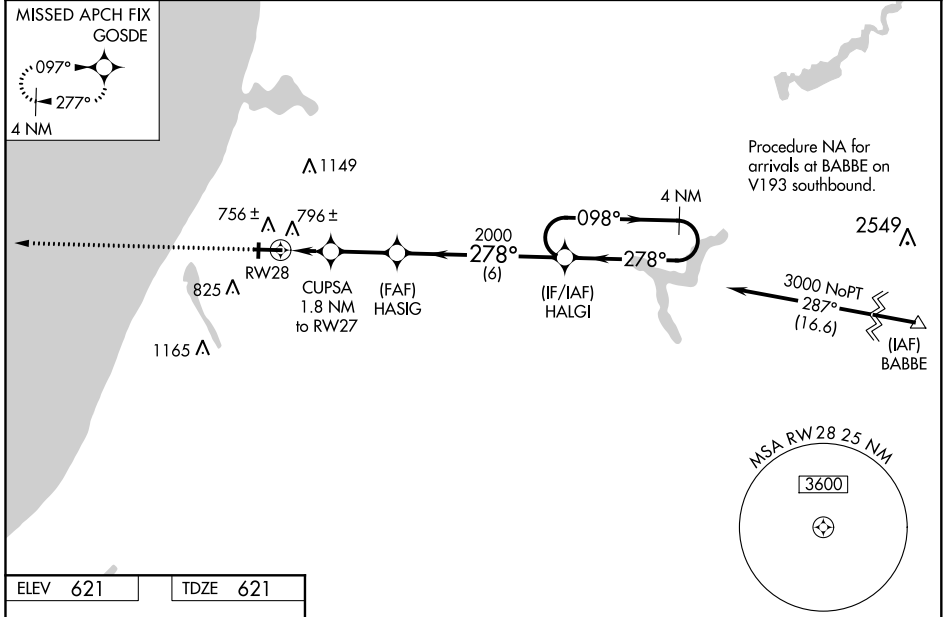
MANISTEE COUNTY-BLACKER (MBL)

**⚠** Night landing: Rwy 1/19 NA. Baro-VNAV NA when using Ludington altimeter setting. For uncompensated Baro-VNAV systems, LNAV/VNAV NA below -16°C (4°F) or above 54°C (130°F). DME/DME RNP-0.3 NA. VDP NA with Ludington altimeter setting. When local altimeter setting not received, use Ludington altimeter setting and increase all DA 50 feet and all MDA 60 feet. Increase LNAV/VNAV visibility all Cats 1/8 mile. Increase LNAV Cats C/D visibility 1/4 mile, and Circling Cat C visibility 1/4 mile.

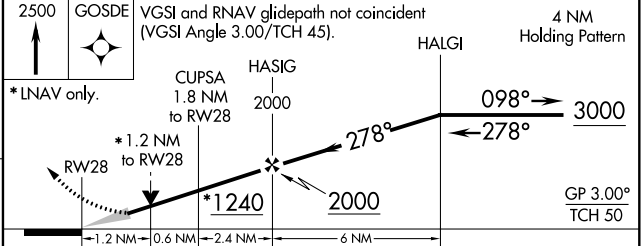
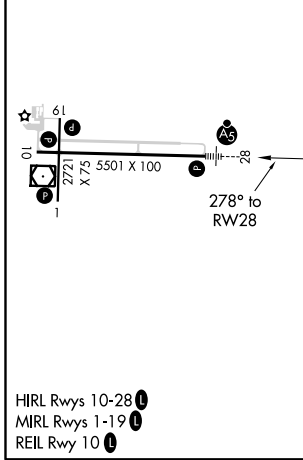
**MALS** 

**MISSED APPROACH:** Climb to 2500 direct GOSDE and hold.

AWOS-3PT <b>111.4</b>	MINNEAPOLIS CENTER <b>120.85 322.35</b>	UNICOM <b>122.8 (CTAF) 0</b>
--------------------------	--	---------------------------------



ELEV 621	TDZE 621
----------	----------



CATEGORY	A	B	C	D
LPV DA		821-1/2	200 (200-1/2)	
LNAV/VNAV DA		984-3/4	363 (400-3/4)	
LNAV MDA	1060-1/2	439 (500-1/2)	1060-3/4	439 (500-3/4)
CIRCLING	1120-1 499 (500-1)	1160-1 539 (600-1)	1200-1 1/2 579 (600-1 1/2)	1300-2 1/4 679 (700-2 1/4)

EC-1, 25 FEB 2021 to 25 MAR 2021

EC-1, 25 FEB 2021 to 25 MAR 2021