

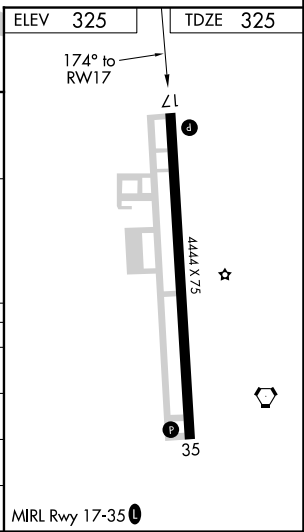
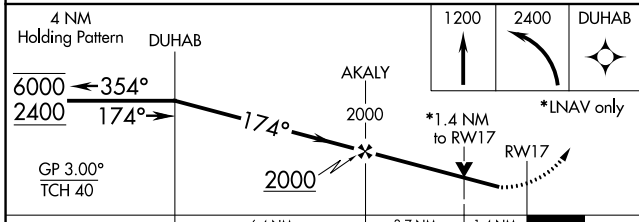
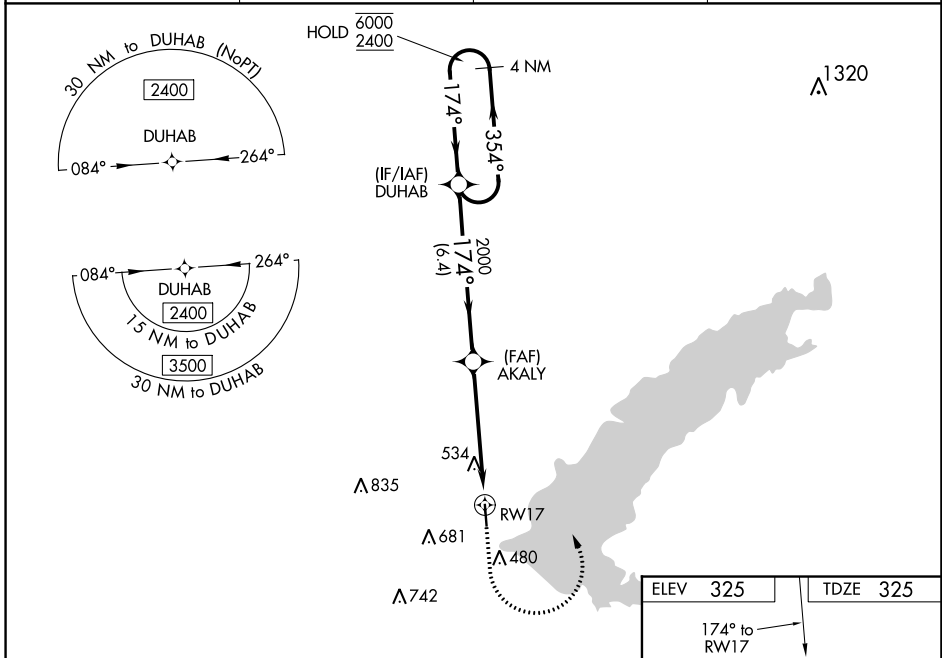
WAAS CH 69231 W17A	APP CRS 174°	Rwy Idg TDZE 325 Apt Elev 325	4444
--	------------------------	---	-------------

RNAV (GPS) RWY 17

BRUCE CAMPBELL FIELD (MBO)

RNP APCH.	<p>▼ Baro-VNAV and VDP NA when using Jackson-Medgar Wiley Evers Intl altimeter setting. ▲ Rwy 17 helicopter visibility reduction below 3/4 SM NA. For uncompensated Baro-VNAV systems, LNAV/VNAV NA below -15°C or above 54°C. When local altimeter setting not received, use Jackson-Medgar Wiley Evers Intl altimeter setting and increase all DA 21 feet and all MDA 40 feet, and increase LNAV/VNAV visibility 1/8 SM, and Circling Cats C/D visibility 1/2 mile.</p>	MISSED APPROACH: Climb to 1200 then climbing left turn to 2400 direct DUHAB and hold.
-----------	--	---

AWOS-3PT 119.125	JACKSON APP CON ★ 123.9 317.7	CLNC DEL 125.9	UNICOM 122.8 (CTAF) 0
----------------------------	---	--------------------------	---------------------------------



CATEGORY	A	B	C	D
LPV DA	600-7/8 275 (300-7/8)			
LNAV/VNAV DA	832-1 3/8 507 (600-1 1/8)			
LNAV MDA	800-1 475 (500-1)	800-1 3/8 475 (500-1 3/8)		
CIRCLING	820-1 495 (500-1)	840-1 515 (600-1)	1040-2 715 (800-2)	1040-2 1/4 715 (800-2 1/4)

SC-4, 25 FEB 2021 to 25 MAR 2021

SC-4, 25 FEB 2021 to 25 MAR 2021