
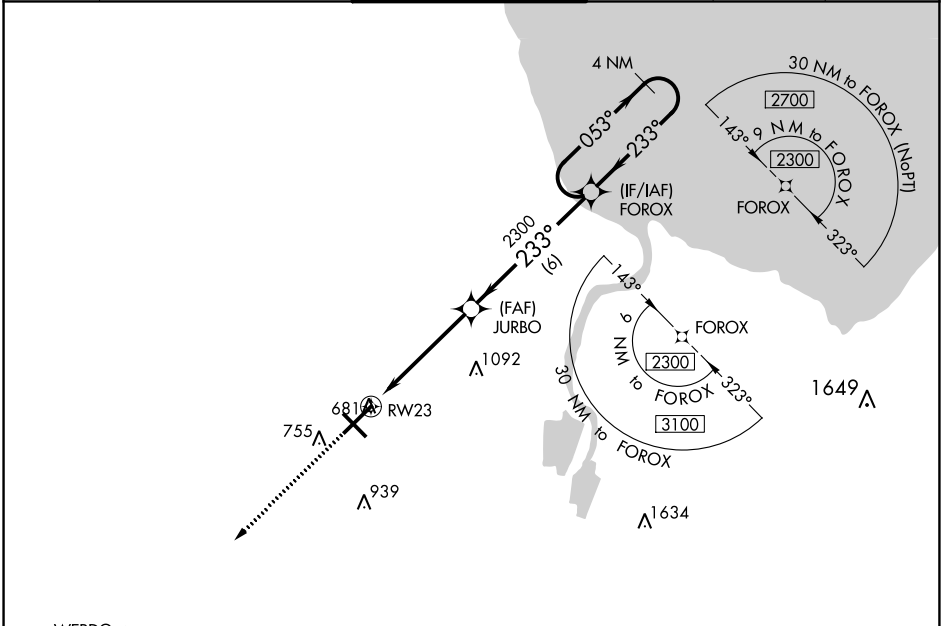



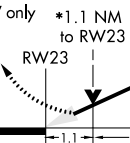
WAAS CH 49010 W23A	APP CRS 233°	Rwy Idg TDZE Apt Elev 8002 661 668
--	------------------------	--

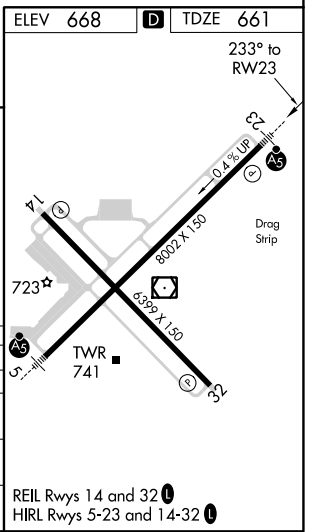
RNAV (GPS) RWY 23

MBS INTL (MBS)

<p>▽ For uncompensated Baro-VNAV systems, LNAV/VNAV NA below -18°C (0°F) or above 54°C (130°F). DME/DME RNP-0.3 NA. For inoperative ALS, increase LNAV/VNAV all Cats visibility to RVR 4500. # RVR 1800 authorized with use of FD or AP or HUD to DA.</p>	<p>MALSR </p>	<p>MISSED APPROACH: Climb to 2300 direct WERDO and hold.</p>			
		<p>ATIS 125.925</p>	<p>GREAT LAKES APP CON * 126.45 235.625</p>	<p>SAGINAW TOWER * 120.1 (CTAF) 257.7</p>	<p>GND CON 121.7</p>



<p>2300 WERDO</p> 	<p>JURBO FOROX 4 NM Holding Pattern</p>			
<p>* LNAV only</p> 	<p>1.1 NM</p>	<p>3.9 NM</p>	<p>6 NM</p>	<p>GP 3.00° TCH 54</p>
CATEGORY	A	B	C	D
LPV DA #		861/24	200 (200-½)	
LNAV/VNAV DA		940/24	279 (300-½)	
LNAV MDA	1060/24	399 (400-½)	1060/35	399 (400-¾)
C CIRCLING	1080-1 412 (500-1)	1120-1 452 (500-1)	1240-1½ 572 (600-1½)	1240-2 572 (600-2)



EC-1, 25 FEB 2021 to 25 MAR 2021

EC-1, 25 FEB 2021 to 25 MAR 2021