

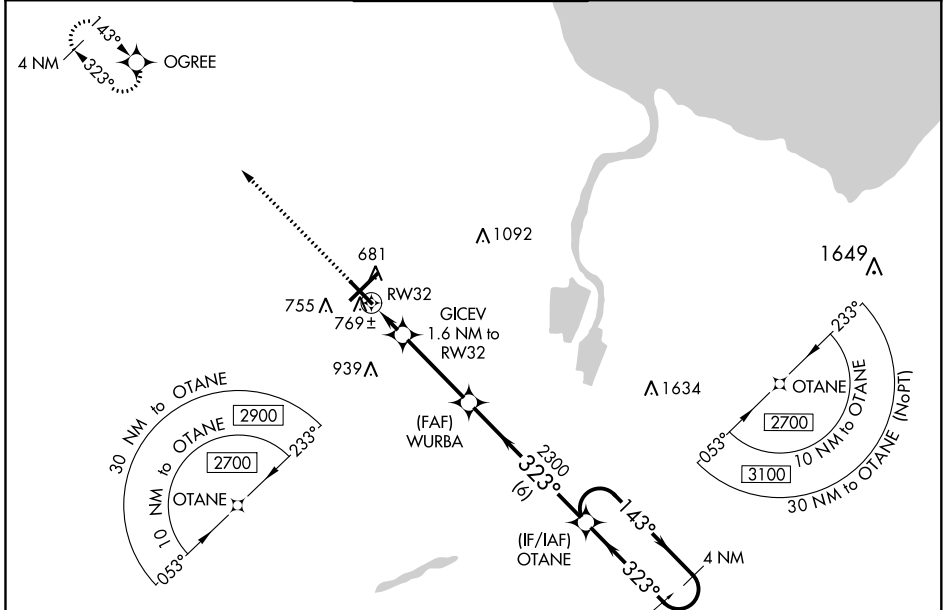
WAAS CH 78011 W32A	APP CRS 323°	Rwy Idg TDZE Apt Elev	6399 665 668
---------------------------------	------------------------	-----------------------------	---

RNAV (GPS) RWY 32

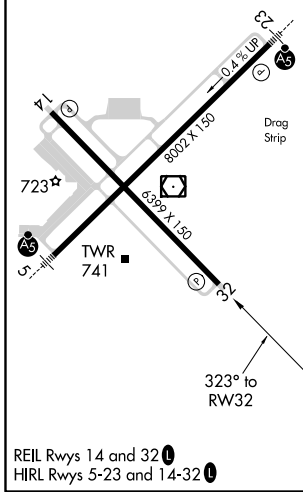
MBS INTL (MBS)

RNP APCH.		MISSED APPROACH: Climb to 2300 direct OGREE and hold.			
For uncompensated Baro-VNAV systems, LNAV/VNAV NA below -18°C or above 54°C.					

ATIS 125.925	GREAT LAKES APP CON * 126.45 235.625	SAGINAW TOWER * 120.1(CTAF) 0 257.7	GND CON 121.7	CLNC DEL 121.85	UNICOM 122.95
------------------------	--	---	-------------------------	---------------------------	-------------------------



ELEV 668	D	TDZE 665
----------	----------	----------



	323°	OGREE	4 NM Holding Pattern	
*LNAV only:	GICEV 1.6 NM to RW32	WURBA 2300	OTANE 6000 2700	
	RW32		GP 3.00° TCH 50	
	1 NM	0.6 NM	3.4 NM	
			6 NM	
CATEGORY	A	B	C	D
LPV DA		865- ³ / ₄	200 (200- ³ / ₄)	
LNAV/VNAV DA		950- ⁷ / ₈	285 (300- ⁷ / ₈)	
LNAV MDA		1020-1	355 (400-1)	
C CIRCLING	1080-1 412 (500-1)	1120-1 452 (500-1)	1240-1½ 572 (600-1½)	1240-2 572 (600-2)

EC-1, 25 FEB 2021 to 25 MAR 2021

EC-1, 25 FEB 2021 to 25 MAR 2021