

WAAS CH 56621 W13A	APP CRS 129°	Rwy Idg TDZE Apt Elev 4691 867 867
--	------------------------	--

RNAV (GPS) RWY 13

OMAR N BRADLEY (MBY)

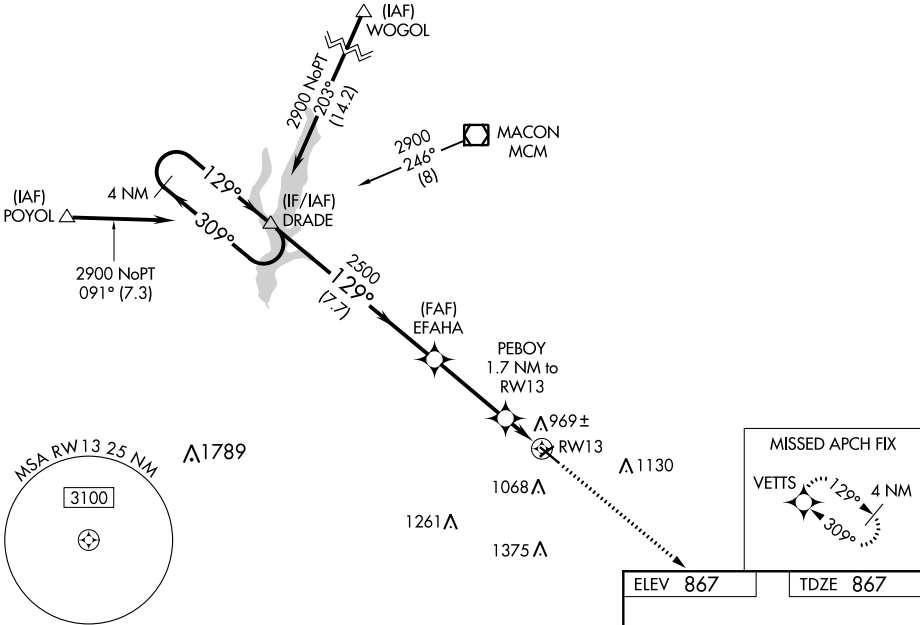
V Circling to Rwy 5 NA at night. Baro-VNAV NA when using Columbia altimeter setting. For uncompensated Baro-VNAV systems, LNAV/VNAV NA below -16°C (4°F) or above 54°C (130°F).
NA When VGSi inop, procedure NA at night. DME/DME RNP-0.3 NA. Visibility reduction by helicopters NA. When local altimeter setting not received, use Columbia altimeter setting and increase all DA 95 feet and all MDA 100 feet, increase LPV visibility 1/8 mile all Cats, LNAV/VNAV visibility 1/4 mile all Cats, LNAV Cat C visibility 3/8 mile and Circling Cat C visibility 1/4 mile.

MISSED APPROACH:
Climb to 3200 direct VETTS and hold.

AWOS-3P
120.025

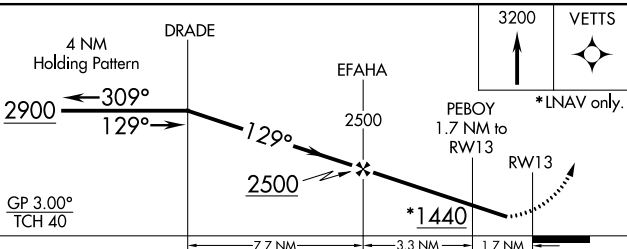
KANSAS CITY CENTER
125.25 235.975

UNICOM
122.7 (CTAF) ①



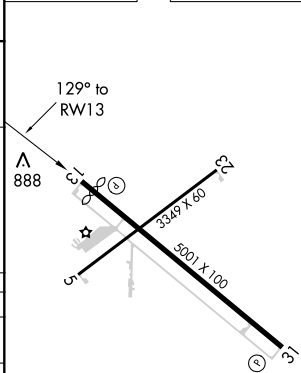
NC-3, 25 FEB 2021 to 25 MAR 2021

NC-3, 25 FEB 2021 to 25 MAR 2021



ELEV 867 TDZE 867

CATEGORY	A	B	C	D
LPV DA		1117-1 250 (300-1)		NA
LNAV/VNAV DA		1142-1 275 (300-1)		NA
LNAV MDA		1220-1 353 (400-1)		NA
CIRCLING	1420-1 553 (600-1)		1480-1 3/4 613 (700-1 3/4)	NA



REIL Rwy 13 and 31 ①
MIRL Rwy 5-23 and 13-31 ①