

WAAS CH <b>77808</b> <b>W34A</b>	APP CRS <b>337°</b>	Rwy Idg TDZE Apt Elev	<b>5000</b> <b>406</b> <b>413</b>
--	------------------------	-----------------------------	---

# RNAV (GPS) RWY 34

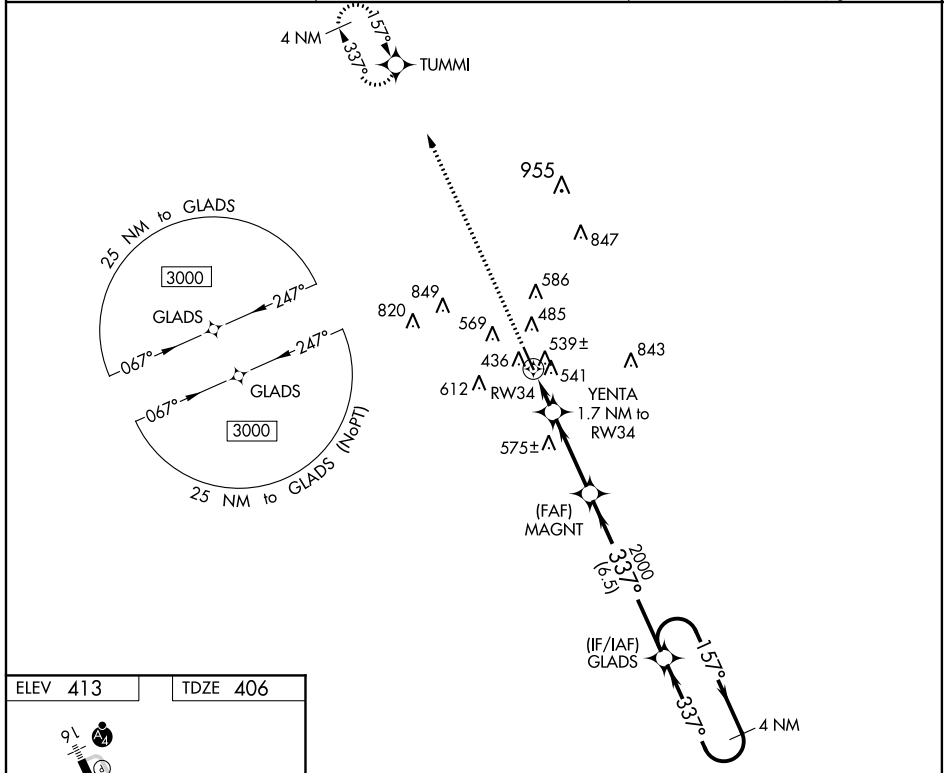
MC COMB/PIKE COUNTY/JOHN E LEWIS FIELD (MCB)

RNP APCH.

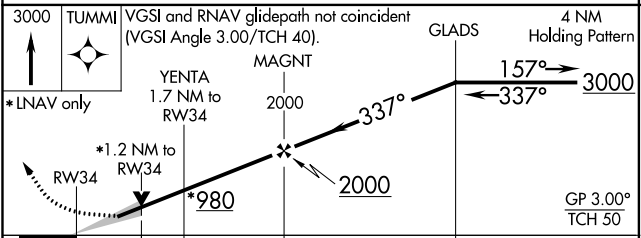
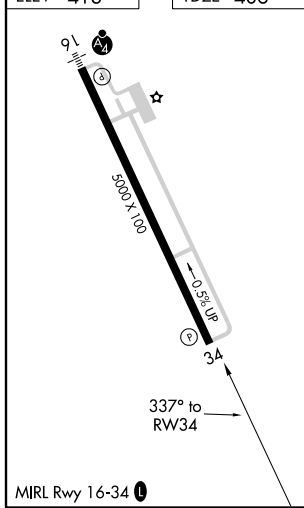
**⚠** For uncompensated Baro-VNAV systems, LNAV/VNAV NA below -4°C (25°F) or above 54°C (130°F).

MISSED APPROACH: Climb to 3000 direct TUMMI and hold.

ASOS <b>119,025</b>	HOUSTON CENTER <b>126.8 327.8</b>	UNICOM <b>123.05 (CTAF) 0</b>
------------------------	--------------------------------------	----------------------------------



ELEV <b>413</b>	TDZE <b>406</b>
-----------------	-----------------



CATEGORY	A	B	C	D
LPV DA		606-3/4	200 (200-3/4)	
LNAV/VNAV DA		739-1	333 (400-1)	
LNAV MDA	800-1	394 (400-1)	800-1 1/8	394 (400-1 1/8)
<b>C</b> CIRCLING	880-1	467 (500-1)	940-1 1/2 527 (600-1 1/2)	1160-2 1/2 747 (800-2 1/2)

# RNAV (GPS) RWY 34

SC-4, 25 FEB 2021 to 25 MAR 2021

SC-4, 25 FEB 2021 to 25 MAR 2021