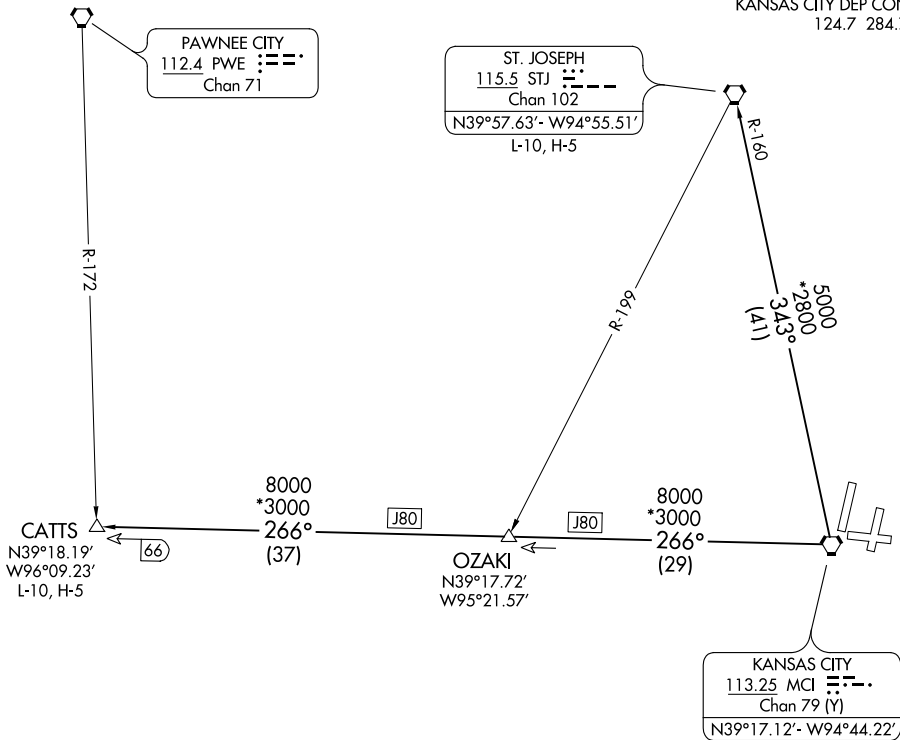


D-ATIS  
128.375  
CLNC DEL  
135.7  
CPDLC  
KANSAS CITY DEP CON  
124.7 284.7



NC-3, 25 FEB 2021 to 25 MAR 2021

NC-3, 25 FEB 2021 to 25 MAR 2021

NOTE: RADAR required.

**TAKEOFF MINIMUMS:**  
Rwys 1L, 1R, 9, 19R, 19L, 27: Standard.

NOTE: Chart not to scale.

**DEPARTURE ROUTE DESCRIPTION**

**TAKEOFF ALL RUNWAYS:** Climb on assigned heading for RADAR vectors to appropriate route. Expect filed altitude 10 minutes after departure.

**CATTS TRANSITION (CHIEF7.CATTS):** From over MCI VORTAC on MCI R-266 to CATTS INT.

**ST. JOSEPH TRANSITION (CHIEF7.STJ):** From over MCI VORTAC on MCI R-343 and STJ R-160 to STJ VORTAC.