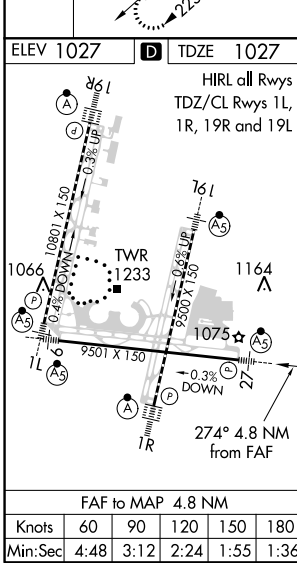
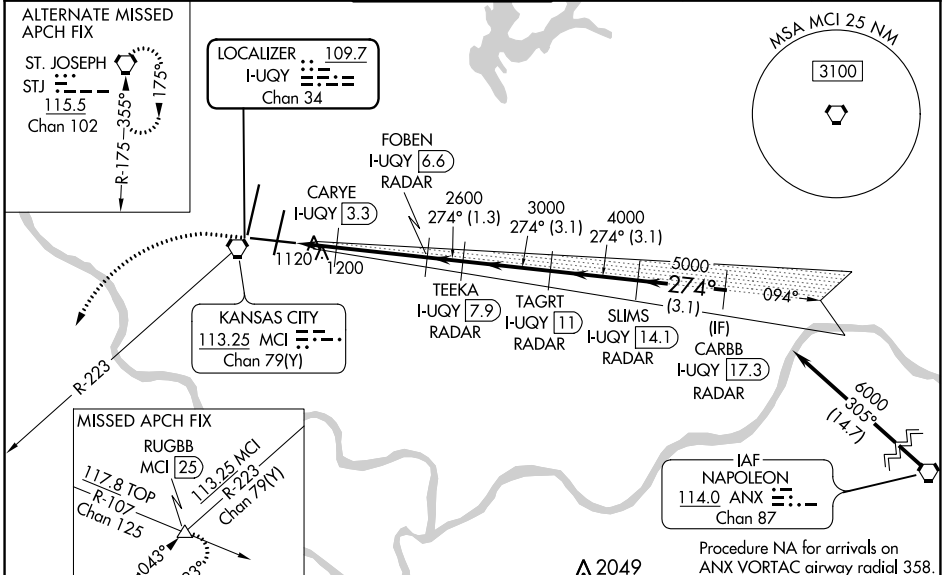


LOC/DME I-JUQY 109.7 Chan 34	APP CRS 274°	Rwy Idg TDZE Apt Elev	9501 1027 1027
---	------------------------	-----------------------------	---

ILS or LOC RWY 27

KANSAS CITY INTL (MCI)

DME or RADAR required.		MALS/R	MISSED APPROACH: Climb to 1600 then climbing left turn to 4000 on heading 230° and MCI VORTAC R-223 to RUGBB INT/MCI 25 DME and hold.		
▽ For inop ALS, increase S-ILS 27 Cat E visibility to RVR 4000, S-LOC 27 Cat C/D/E visibility to 1 3/4 SM and CARYE fix minimums S-LOC 27 Cat C/D/E visibility to RVR 5500. # RVR 1800 authorized with use of FD or AP or HUD to DA.					
D-ATIS 128.375	KANSAS CITY APP CON 120.95 318.1	INTERNATIONAL TOWER 128.2 254.25	GND CON 121.8	CLNC DEL 135.7	CPDLC



ELEV 1027	TDZE 1027	Procedure NA for arrivals on ANX VORTAC airway radial 358.				
1600 ↑ hdg 230°	4000 ↓	MCI R-223 △	RUGBB △	VGSI and ILS glidepath not coincident (VGSI Angle 3.00/TCH 72).	CARBB I-JUQY 17.3 RADAR	SLIMS I-JUQY 14.1 RADAR
*LOC only	CARYE I-JUQY 3.3 RADAR	FOBEN I-JUQY 6.6 RADAR	TEEKA I-JUQY 7.9 RADAR	TAGRT I-JUQY 11 RADAR	I-JUQY 17.3 RADAR	SLIMS I-JUQY 14.1 RADAR
1540*	2600	2600	3000	4000	5000	6000
0.9	0.6	-3.3 NM	-1.3 NM	-3.1 NM	-3.1 NM	-3.1 NM
CATEGORY	A	B	C	D	E	
S-ILS 27#	1227/24 200 (200-1/2)					
S-LOC 27	1540/24	513 (600-1/2)	1540/55 513 (600-1)			
C CIRCLING	1540-1	513 (600-1)	1540-1 1/2	513 (600-1 1/2)	1580-2	553 (600-2)
CARYE FIX MINIMUMS						
S-LOC 27	1380/24	353 (400-1/2)	1380/30 353 (400-3/4)			
C CIRCLING	1540-1	513 (600-1)	1540-1 1/2	513 (600-1 1/2)	1580-2	553 (600-2)

NC-3, 25 FEB 2021 to 25 MAR 2021

NC-3, 25 FEB 2021 to 25 MAR 2021