

APP CRS	Rwy Idg	9500
191°	TDZE	994
	Apt Elev	1026

RNAV (RNP) Z RWY 19L

KANSAS CITY INTL (MCI)

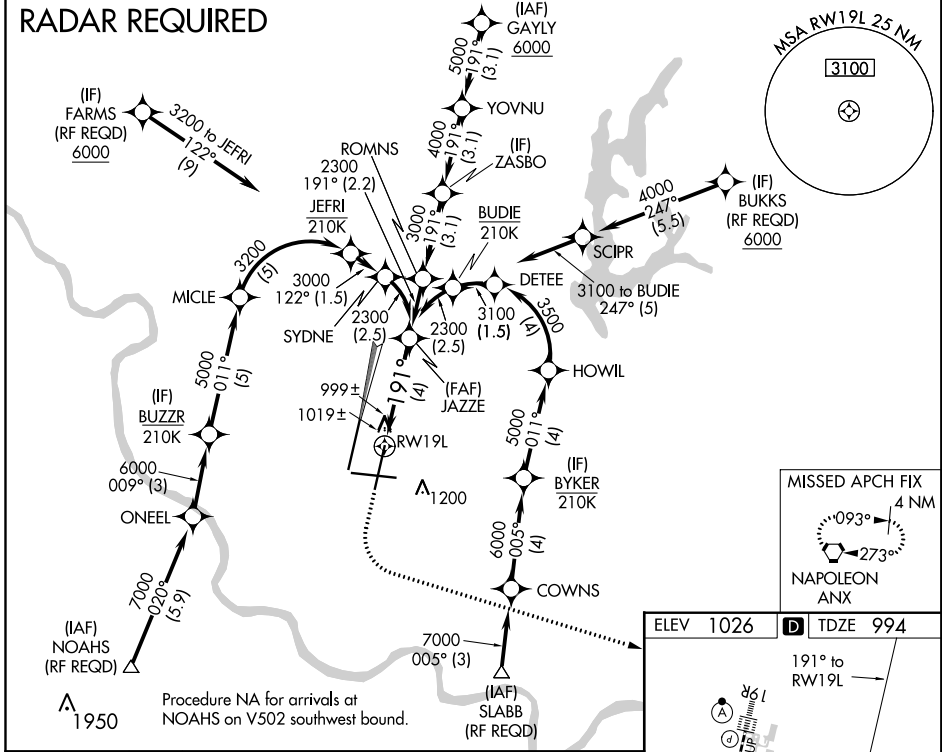
▼ For uncompensated Baro-VNAV systems, procedure NA below -20°C (-4°F) or above 54°C (130°F). For inop MALS, increase RNP 0.20 all Cats visibility to RVR 5000 and RNP 0.30 all Cats visibility to RVR 6000. GPS required. Simultaneous approach authorized with Rwy 19R, except for arrivals at NOAHS, FARMS, BUKKS, and SLABB. Use of FD or AP providing RNAV track guidance required during simultaneous operations.

MALS

MISSED APPROACH:
 Climb to 1500 then climbing left turn to 4000 direct ANX VORTAC and hold.



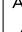
D-ATIS	KANSAS CITY APP CON	INTERNATIONAL TOWER	GND CON	CLNC DEL	CPDLC
128.375	120.95 318.1	128.2 254.25	121.8	135.7	

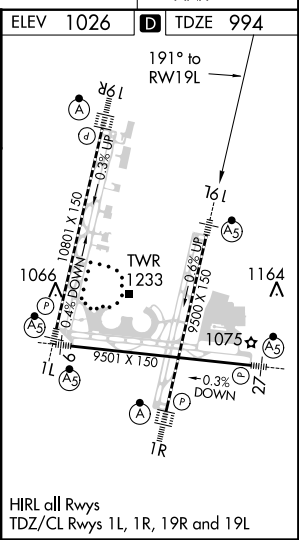
RADAR REQUIRED



NC-3, 25 FEB 2021 to 25 MAR 2021

NC-3, 25 FEB 2021 to 25 MAR 2021

1500	4000	ANX		
				
<p>RW19L</p> <p>JAZZE 2300</p> <p>191°</p> <p>2300</p> <p>GP 3.00° TCH 59</p> <p>See Planview for multiple IF locations.</p> <p>4 NM</p>				
CATEGORY	A	B	C	D
RNP 0.20 DA		1306/26	312 (300-½)	
RNP 0.30 DA		1361/35	367 (400-¾)	
AUTHORIZATION REQUIRED				



HIRL all Rwys
 TDZ/CL Rwys 1L, 1R, 19R and 19L